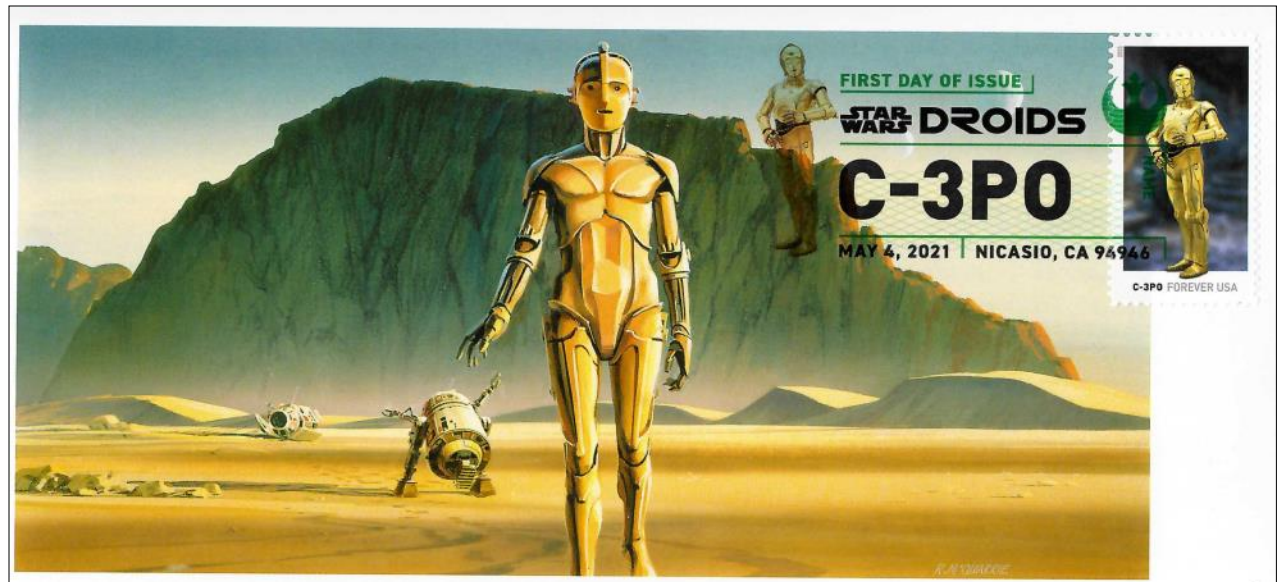


The Quarterly Journal of the Maximum Card Study Unit

NORTH AMERICAN MAXIMAPHILY

Volume 41, No. 1

Jan/Feb/March 2023



Winner of the USA's 2021 Maximum Card of the Year Competition

Realized by Ying Huang

Stamp: Star Wars Droid C-3PO, Scott #5579

Postcard: C-3PO, published by Disney—Lucas Films

Postmark: Digital Color Pictorial FDOI, Nicasio, CA 5/4/2021

TABLE OF CONTENTS

Letter from the President	2
Elephants	3
Colorado Through Maximum Cards.....	15
Travel and Maximum Cards	22
Recent Realizations (USA).....	25
Membership Application	32

Board of Directors

Terry Watson	President
Sun Yu Ng	Vice President
Amanda Dempsey	Treasurer
George Constantourakis:	At Large
Dorin Cojocariu	At Large

Letter From the President

On the cover of this journal you will see the winning card in the Maximum Card Study Unit's 2021 USA Maximum Card of the Year Competition. The card was realized by MACSU member Ying Huang. It is a great card featuring the popular Star Wars Droid character of C-3PO. The card has a clear, crisp, digital color pictorial postmark that is very concordant. The card has been submitted to the FIP's Maximaphily Commission as the US entrant in the International 2021 Maximum Card of the Year Competition. It will be interesting to see how the delegates to the Maximaphily Commission respond to this card with its non-traditional size. Voting in the FIP International Competition has begun and the results will be announced in our next journal.

At the bottom of this page you will notice a new lineup within our Board of Directors. After more than 15 years of service as the Treasurer of the Maximum Card Study Unit, Gerry Marandino has asked to retire from this position. As much as he will be missed, the good news is that a successor has stepped forward. Amanda Dempsey has agreed to serve as our new Treasurer. While she is relatively new to maximaphily, she loves maximum cards and is already realizing new issues.

Dorin Cojocariu has also been added to the board as a Board Member at Large. He has been serving as the Assistant Editor to this journal. He is the founder and chief administrator to the largest maximaphily Facebook group on the planet! *Maximaphily, Traditional and Non-Traditional* has well-over 2,000 members. Check it out and join! Maximum cards from around the world are displayed at this site every day.

George Constantourakis has asked to remain on the MACSU Board as an At Large member and his request has been accepted. Our Board looks forward to serving you.

MAXIMUM CARD STUDY UNIT OF NORTH AMERICA

The Maximum Card Study Unit (MACSU) is an independent non-profit organization dedicated to the creation, collection, exchange, enjoyment, display, and study of Maximum Cards, by spreading the knowledge of Maximaphily among its members. The activities of MACSU are planned and carried on entirely by the volunteer services of its officers and members. MACSU is Affiliate # 106 of the American Philatelic Society, Chapter # 67 of the American First Day Cover Society and an affiliate of the American Topical Association.

Board Members:

Terry Watson
President, Editor
Lithia Springs, GA
terryw7633@comcast.net

Sun Yu Ng
Vice President
Menlo Park, CA
sng94025@gmail.com

Amanda Dempsey
Treasurer
Forest Park, IL
suozib@gmail.com

George Constantourakis
At Large
Montreal, Canada
geo.constant@sympatico.ca

Dorin Cojocariu
At Large
Herndon, VA
dorindorinco@gmail.com

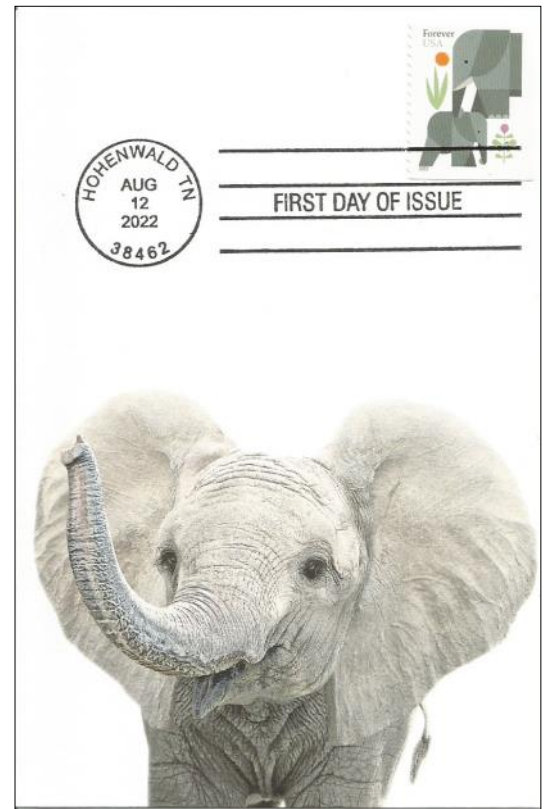
The Elephant

On August 12, 2022 the US Postal Service issued an elephant stamp in a booklet format. The USPS described the stamps as “lighthearted and playful”, featuring “fanciful, digital illustration of an elephant interacting with its young calf, depicting the affectionate nature of these beloved animals”. The official first day of issue site of Hohenwald, Tennessee may at first sound non-concordant. However, once it is known that Hohenwald is the home of the Elephant Discovery Center, the concordance is established. The Elephant Discovery Center mission is to “provide captive elephants with individualized care, the companionship of a herd, and the opportunity to live out their lives in a safe haven dedicated to their well-being” and to “educate the public of the complex needs of elephants in captivity and the crisis facing elephants in the wild”.

The elephant is the largest terrestrial animal currently living on the planet. Of the three living species, a bull African bush elephant can reach the height of 11 feet and weigh as much as 7 tons. Female African Bush elephants are 23% smaller.

Somewhat smaller, the Asian bull elephant can reach a height of 9 1/2 feet tall at the shoulders and weigh five tons. The third living species is the African forest elephant and it is the smallest of today’s elephants. A bull forest elephant usually can be just over 7 feet tall and weigh 2 1/2 tons.

Other than its large size, the elephant has a number of distinctive physical features, including a trunk, large ears, tusks, and pillar-like legs. An elephant’s trunk is extremely versatile.

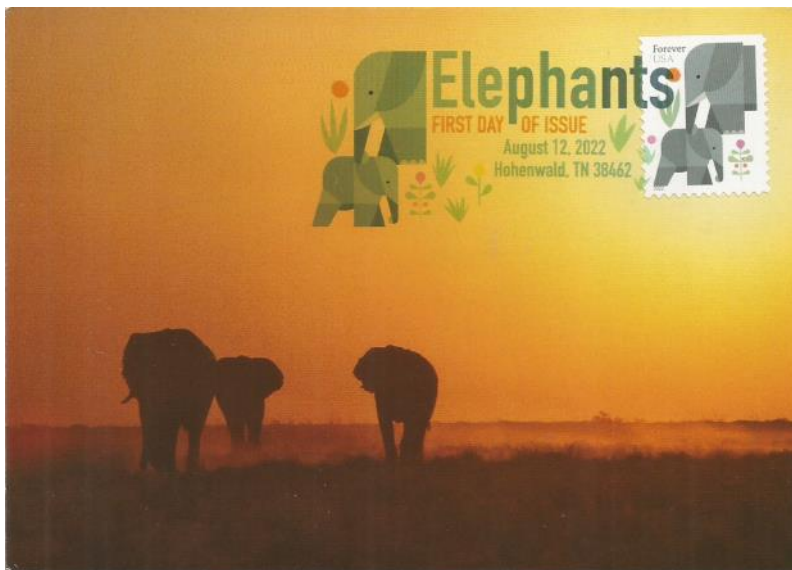


Stamp: Elephant, Scott #5714

Postcard: “Elephant Portrait”, published by Lotus Print Shop

Postmark: 4 bar FDOI, Hohenwald, TN, 8/12/2022

Realized by Amanda Dempsey



Stamp: Elephant, Scott #5714

Postcard: “Dusk in Etosha”, published by Johan Steyn PhotoVision (Namibia)

Postmark: digital color pictorial FDOI, Hohenwald, TN 8/12/2022

This important appendage is a fusion of the nose and upper lip. It is comprised of 150,000 specialized muscles which operate together in a highly complex manner of precisely coordinated contractions. The trunk is so strong that it can lift 700 pounds. Yet, it can perform such a delicate task as opening a peanut shell without breaking the peanut.

The elephant's trunk is multi-functional. It is used for grasping, breathing, sound production, touching and smell. Because of its strength and dexterity, a trunk allows it to collect food, drink water, wrestle with other elephants, and communicate through touching. The following five collector-realized maximum cards depict the versatility of the trunk.



Stamp: Elephants from German Democratic Republic's Berlin Zoo issue,

Postcard: Elephant Baby in Berlin Zoo, published by Graphokopie

Postmark: pictorial "Tierpark" Berlin, 1/20/1959

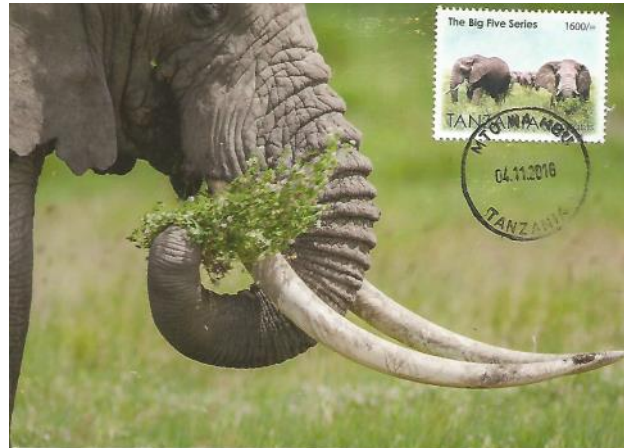
Elephants are herbivores. African bush elephants are primarily browsers, while Asian elephants are grazers. Elephants can eat up to 330 pounds of food a day. African elephants have two finger-like tip appendages at the end of their trunk that allow them to grasp food and bring it to their mouth. With their prehensile trunk, African elephants can stand on their hind legs and forage for tree leaves 23 feet above the ground.

Stamp: Elephants, from Tanzania's 2010 "Wild Animals of Tanzania" issue

Postcard: African Elephant, published by Panthra, LTD.

Postmark: Namanga, Tanzania 11/5/2016

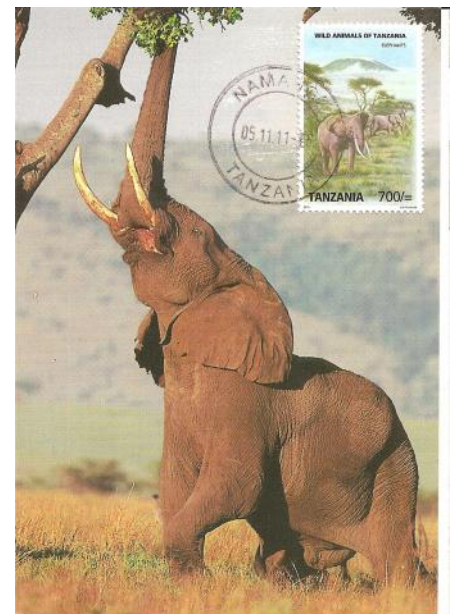
An elephant will often raise its trunk up high in order to maximize its sense of smell at a distance. It has been said that the elephant's sense of smell may be four times as sensitive as that of a bloodhound and that it is able to smell a water hole from miles away.



Stamp: Elephants, from Tanzania's "Big Five Series"

Postcard: Elephant, unknown publisher (Tanzania)

Postmark: Mto Wa Mbu, Tanzania 11/4/2016

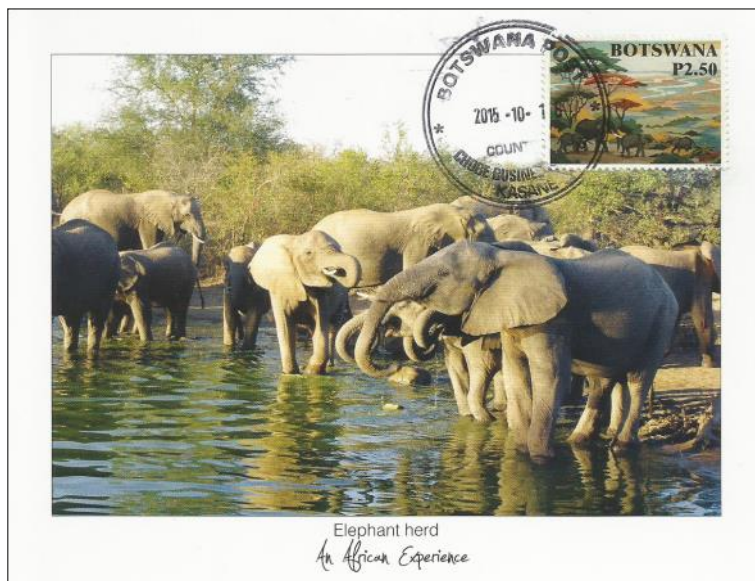


The elephant's trunk is also used in the drinking of water. Elephants will gather at water holes in the morning and in the late afternoon. They can inhale and hold up to two gallons of water in their trunks before "squirting" it into their mouths.

Stamp: Botswana savannah scene, 1998

Postcard: "Elephants Love Water", published by ATP Photography and Publishers

Postmark: "Chobe Business Center", Kasane, Botswana 10/16/2015



Elephant herd
An African Experience



In addition to water, elephants can suck up mud and dirt which they will spray on to their bodies. This action cools their bodies and protects against insect pests.

Stamp: Elephants, from Tanzania's 2010 "Wild Animals of Tanzania" issue

Postcard: African Elephants cooling off, published by Isibongo

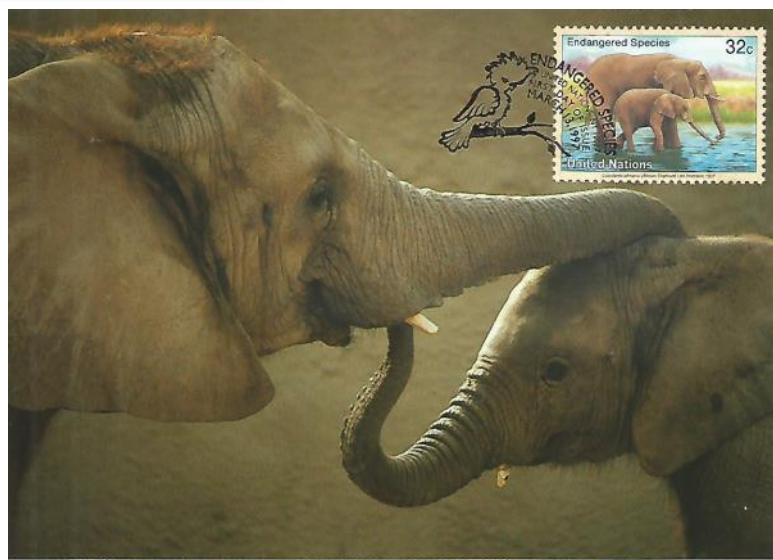
Postmark: Mto Wa Mbu, Tanzania 11/4/2016

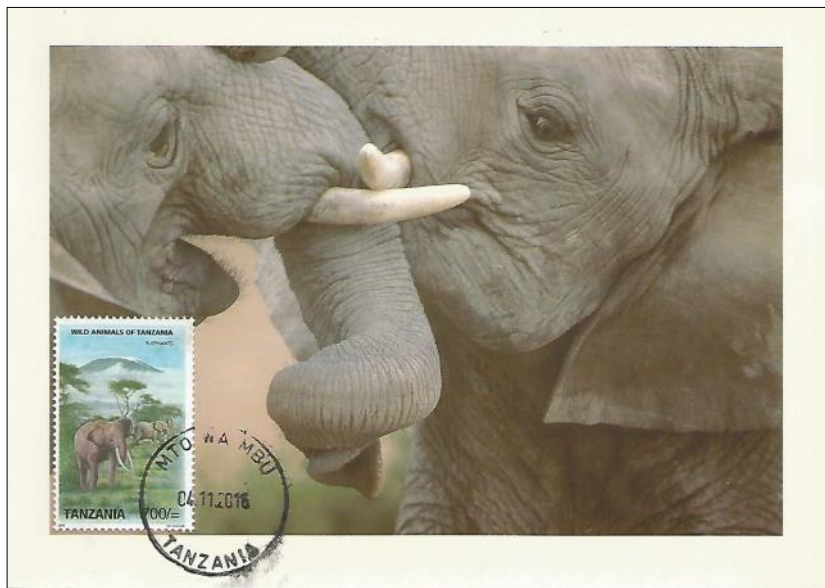
The trunk plays an important role in elephant communication as evidenced by this postcard's depiction of the interaction between a mother and her calf.

Stamp: Elephants, from UN's 1997 "Endangered Species" issue

Postcard: Elephant, published by Impact

Postmark: FDOI, New York, UN 3/13/1997





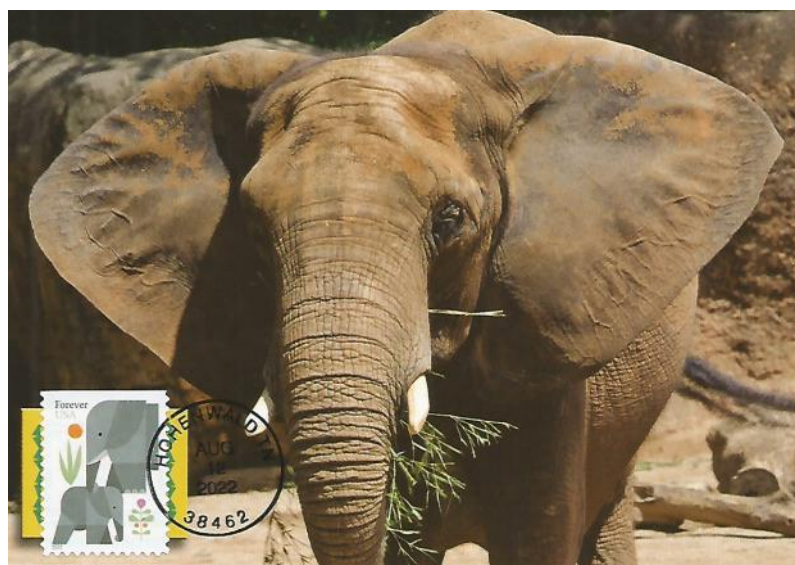
When bull elephants enter a stage of increased testosterone (musth), they can become extremely aggressive and clashes between males can occur. Once again, the trunk is a useful tool for an elephant in this condition.

Stamp: Elephants, from Tanzania's 2010 "Wild Animals of Tanzania" issue

Postcard: "Elephants Fighting", published by Isibongo (South Africa)

Postmark: Mto Wa Mbu, Tanzania 11/4/2016

Another distinctive feature of the elephant is its large ears. One of the easiest ways to differentiate an African elephant (right) from a Asian elephant (below) is by a comparison of their ears. An African elephant's ears are much larger and are roughly shaped like the continent of Africa.



Stamp: Elephant, Scott #5714

Postcard: African Elephant, published by Zoo Atlanta

Postmark: circle-date FDOI, Hohenwald, TN 8/12/2022



In addition to their use in hearing (which is extremely good), elephant ears also serve a purpose in the cooling of the animal. An elephant's ear flaps contain numerous blood vessels and their close proximity to the air can help with cooling, even more so when they are flapped.

Stamp: Asian Elephant, 1995 joint issue with China

Postcard: Asian elephants, unknown maximum card publisher (China)

Postmark: Su Rin, Thailand, 7/1/2000

Another distinguishing feature of the elephant is its tusks. The tusks of an elephant are modified second incisors in the upper jaw. They, too, serve multiple purposes. They are used in protecting itself, in fighting, in digging for water and salt, in debarking trees, etc. In previous times, the tusks of elephants were longer. It has been hypothesized that the shorter tusks are an evolutionary response to the hunting of elephants for their ivory tusks. While this is speculative, there is no doubt that the ivory trade has been the major factor in the decline of elephant populations.

African elephant males and females have tusks of similar lengths, although the males' tusks tend to be thicker. Female Asian elephants have shorter tusks than their male counterparts. Females may also not have tusks and more rarely, male Asian elephants will not grow tusks. The tusks of male Asian elephants can be as long as African elephants, but are not as thick.

The African bush elephant can be found throughout sub-Saharan Africa, primarily in the savannahs of West and South Africa. But they can also be found in the deserts of Namibia and Botswana. The Asian elephant's range includes South

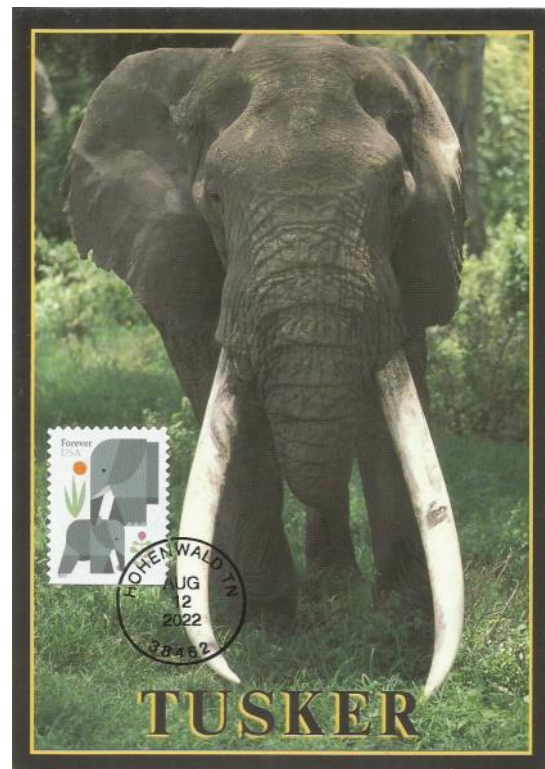
Asia and Southeast Asia, including the countries of India, Sri Lanka, Thailand, China, Cambodia, Indonesia, Malaysia, and Laos.

The third currently living elephant species is the African forest elephant. They are smaller than the other two elephant species. The African forest elephant was long considered to be a subspecies of the African elephant. However, recent DNA and morphological studies have shown that it is a distinct species. The range of the African forest elephant includes the rainforest areas of Central Africa. The country of Gabon has the largest, stable population of forest elephants.

Stamp: Elephant, French Equatorial Africa, Scott #197

Postcard: Elephant Herd, Editions HOA-QUI (This postcard does not depict forest elephants, but African bush elephants)

Postmark: Pointe Noir, French Equatorial Africa 3/8/?9



Stamp: Elephant, Scott #5714

Postcard: "Mr. Tusker", published by N H Savana Publishers

Postmark: circle-date FDOI, Hohenwald, TN 8/12/2022

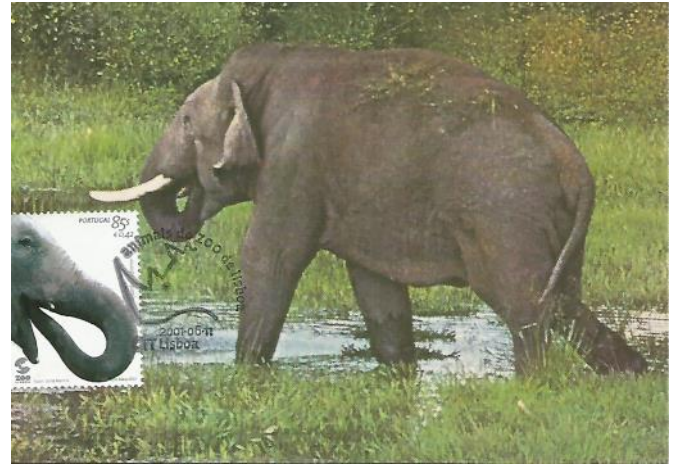
The habitats of the elephant are diverse. They live in savannahs, marshes, deserts, and forests, but they must be near water as they must drink daily. Elephants that live in the desert remain near water holes and migrate to other locations when these holes dry up.



Stamp: Elephant, Scott #5714

Postcard: "Gentle Giants", published by Wild Photo Shop (Namibia)

Postmark: circle-date FDOI, Hohenwald, TN
8/12/2022



Stamp: Elephant from the 2001 Lisbon Zoo issue,

Postcard: "Elefante Asiatico", published by Edicao Deltiologica

Postmark: pictorial FDOI, Lisbon, Portugal
11/6/2001

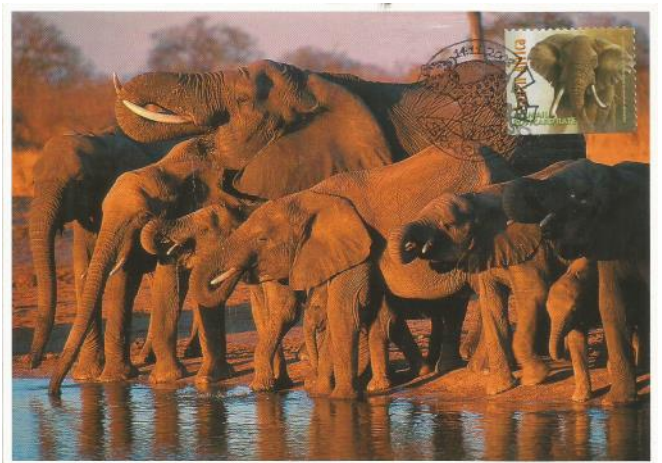
The skin of elephants is up to an inch thick on its head and back. However thick, its skin is sensitive. Its regular mud baths protect an elephant's skin from burning, loss of moisture and insect bites. Typically, an adult elephant is grey in color. Asian elephants often have splotches on their head area due to pigmentation issues. Due to their mud and dirt baths, the elephants tend to appear the color of their surrounding soil. Thus, elephants can appear to be brown, black, red, or even white as is the case for elephants in Namibia's Etosha National Park. This is due to the salt pans that the Etosha elephants frequent.



Stamp: Elephant, Scott #5714

Postcard: Etosha "white" Elephant, published by John Steyn PhotoVision (Namibia)

Postmark: 4 bar FDOI, Hohenwald, TN
8/12/2022



Stamp: Elephant, 2001 postcard rate, Scott #5714

Postcard: Elephants at waterhole, published by Wild Treks (South Africa). Elephants appear to be red due to surrounding red clay environment.

Postmark: pictorial, Skukuza, Kruger National Park, South Africa 8/12/2022

The social life of male and female elephants is very different. The female African bush elephant will spend her entire life in a tight-knit group that can range in size up to twelve or more individuals. Included in this matriarchal social group may be more than three mothers and their offspring, both calves and juveniles. This group is led by the eldest female and upon her death, her eldest daughter assumes the leadership position. These family groups can split when they become too large, or if there is a shortage of resources. Elephant family groups will often associate and possibly bond with other family groups and form clans. Asian elephant family groups tend to be somewhat smaller than African bush elephants. African forest elephant families can be smaller, still.



Stamp: Elephant 2014 Air Mail Postcard rate, South Africa

Postcard: Elephant Herd on the move, published by Wild Treks

Postmark: Tambo International Airport (Kempton Park), South Africa 10/10/2015

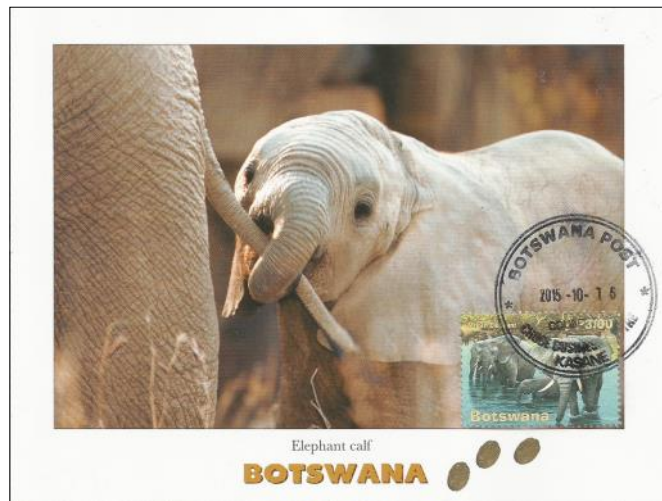
The gestational period for elephants is around two years. Mothers, as well as the entire herd, are extremely protective of calves as they are very vulnerable to predators.

As a juvenile male elephant matures, it spends more time at the periphery of the family group. He will begin to associate with other males in other groups and finally will disassociate himself from the family group altogether. Adult male elephants spend much of their time alone or in single-sex groups. If an oestrous cow is present, a bull elephant will associate with a family group until mating has occurred.

Stamp: Bull Elephant, 1980 South West Africa

Postcard: Bull Elephant, published by R W Agencies

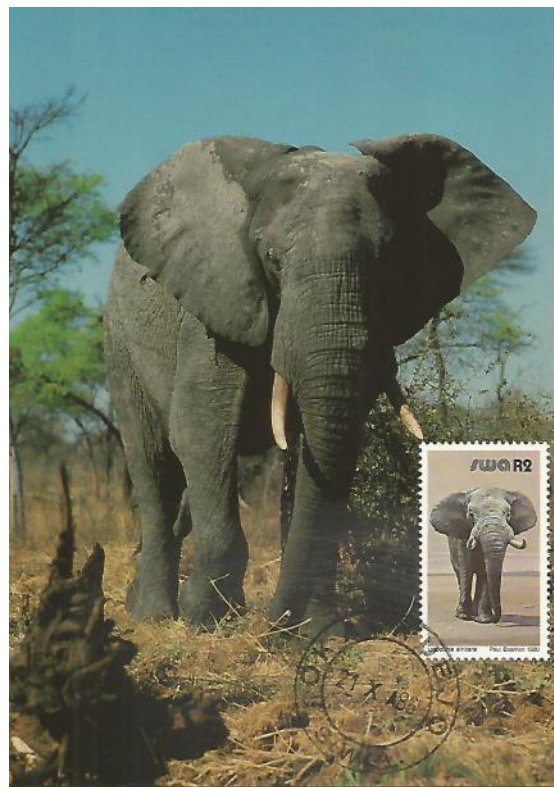
Postmark: Okukuejo (Etosha National Park), South West Africa (now Namibia) 10/21/1986



Stamp: African Elephant, Botswana

Postcard: Elephant Calf, published by Andy Tinker Photography

Postmark: Chobe Business Center P.O., Kasane, Botswana 10/16/2015



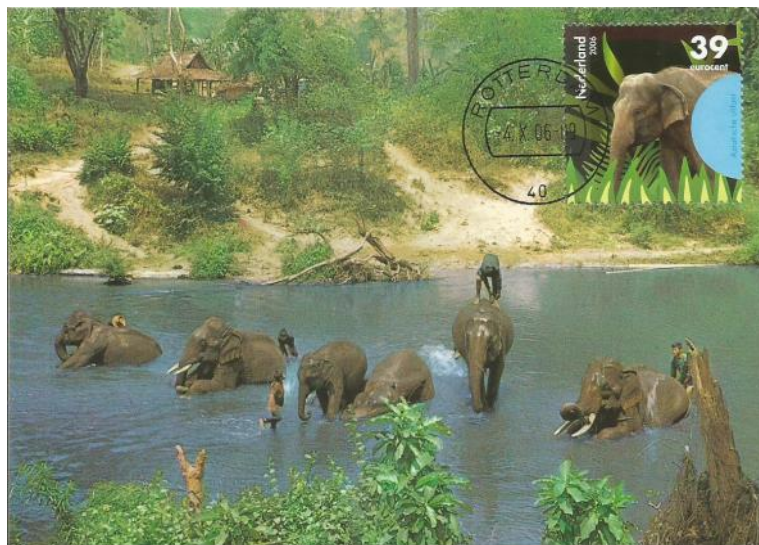
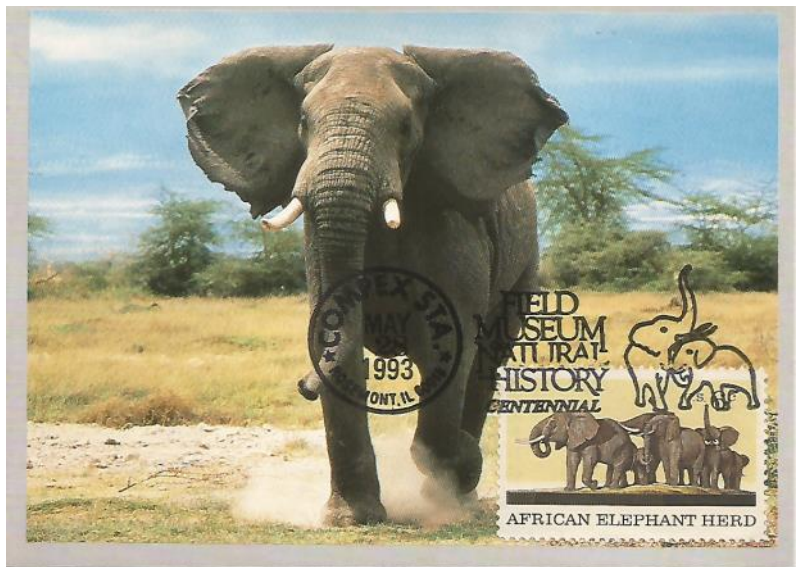
Elephants can be very aggressive towards humans. There are instances where elephants in India have ransacked villages, destroying homes and killing people.

African safari jeeps are not infrequently charged by elephants, especially males in a state of musth.

Stamp: African Elephant Herd from the Natural History issue, Scott #1388

Postcard: charging bull elephant, unknown publisher

Postmark: pictorial "Field Museum of Natural History Centennial, COMPLEX Station", Rosemont, IL 5/28/1993



Stamp: Asian Elephant, 2006 Netherlands

Postcard: Bathing working elephants, published by De Stulp (Netherlands)

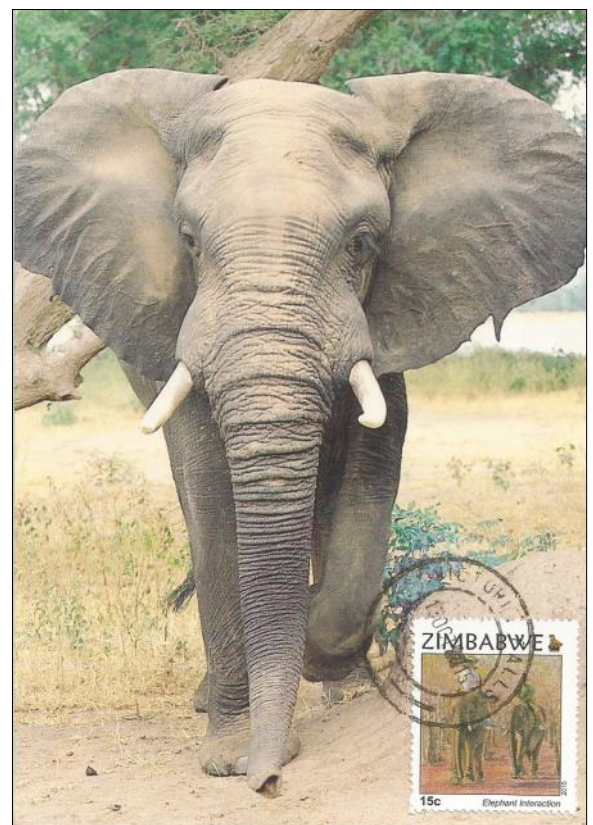
Postmark: Rotterdam, 10/4/2006

The African elephant has been more difficult to turn into a working animal. To date, African elephants have primarily been trained to provide rides for tourists and to perform in the circus.

Stamp: African "Elephant Interaction" (tourists riding), 2015, Zimbabwe

Postcard: Bull Elephant, published by Photo Safari

Postmark: Victoria Falls, Zimbabwe 10/13/2015

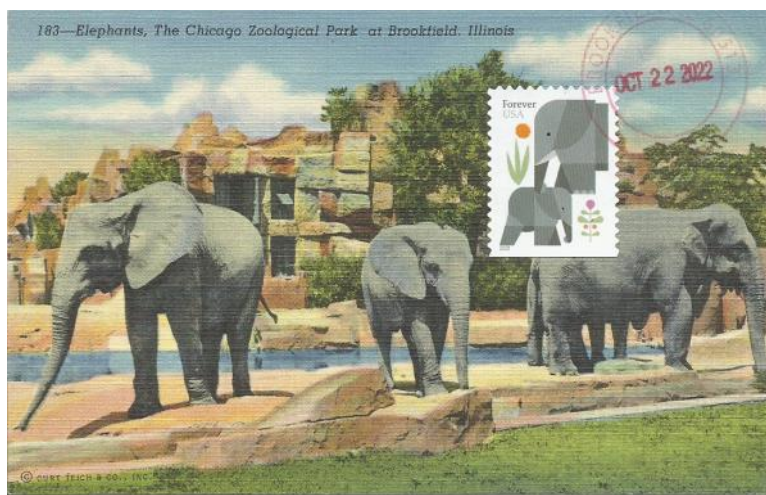
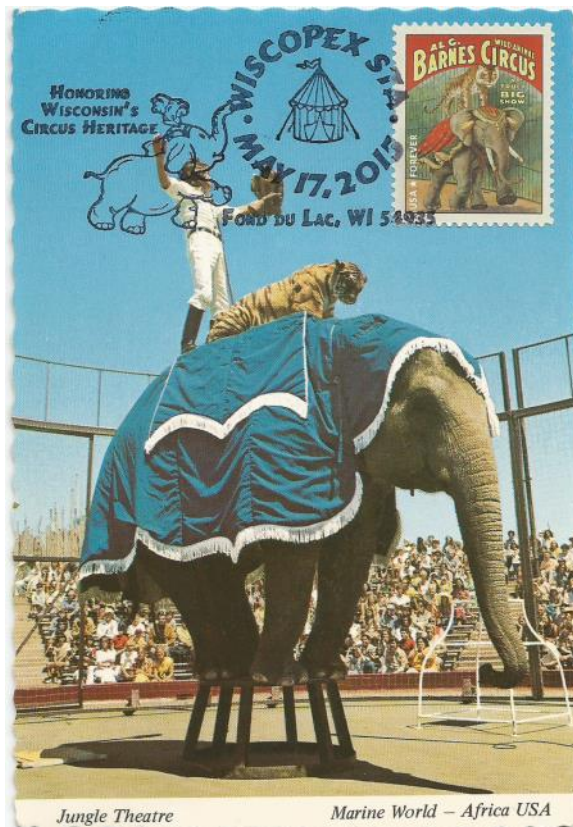


While popular for decades, the participation of elephants in circuses has become controversial as their training techniques have come under scrutiny. In 2016, Ringling Bros. and Barnum and Bailey Circus retired its touring elephants.

Stamp: Barnes Circus Poster, Scott #4901

Postcard: Elephant & Tiger Performing at Marine World, published by Mike Roberts

Postmark: pictorial "WISCOPEX Station", Ford du Lac, WI 5/17/2015



Stamp: Elephant, Scott #5714

Postcard: "Elephants, The Chicago Zoological Park", linen-era postcard, published by C.T.Art-Colortone

Postmark: circle-date Brookfield, IL 10/22//2022

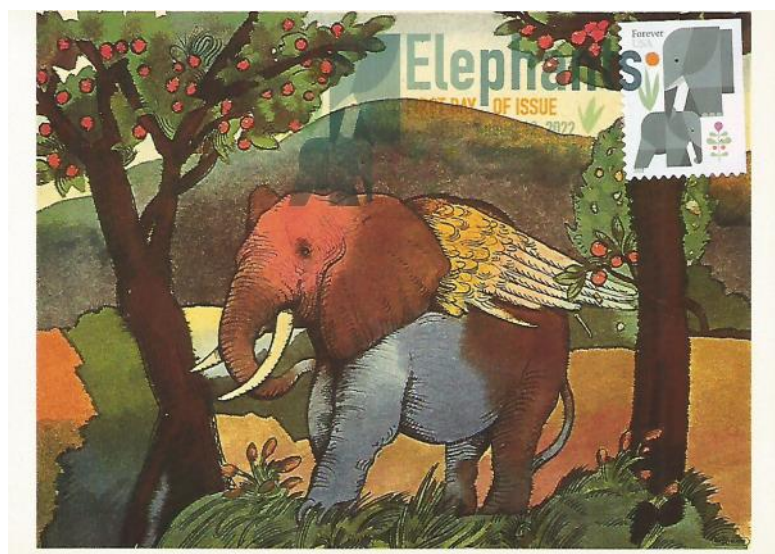
The keeping of elephants in zoos has also become controversial with critics stating that the animals are stressed. Zoos have responded by creating more natural zoo habitats. Proponents of elephants in zoos state that zoos give opportunities for research and ultimately help the preservation of the animals in the wild through creating awareness and funding.

Throughout history, the elephant has been depicted in religion, symbolism, and popular culture. Elephants were a subject of Stone Age cave art and have continued to be a subject of a variety of art forms up through the modern era.

Stamp: Elephant, Scott #5714

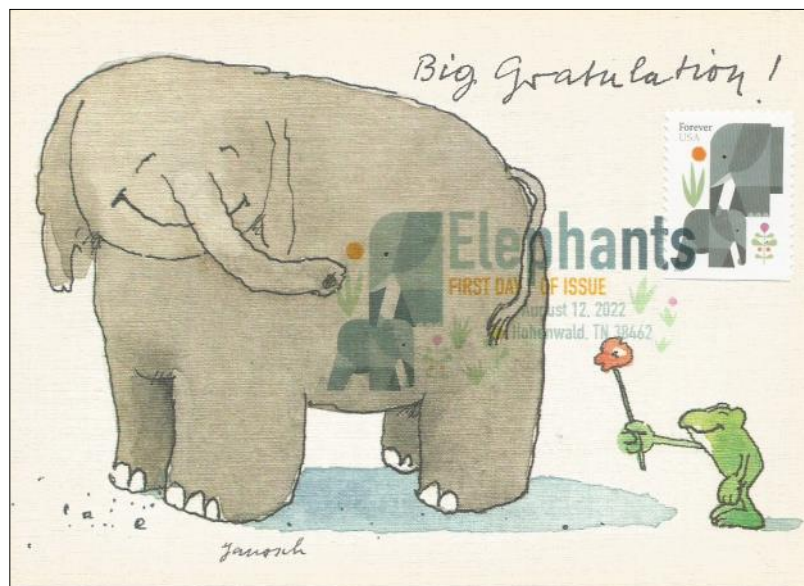
Postcard: Milton Glaser's "Overlook-Ten Years", published by Art Post

Postmark: digital color pictorial FDOI, Hohenwald, TN 8/12/2022



The elephant has come to symbolize a number of different things, including wisdom, intelligence, royal power, strength, power, longevity, stamina, leadership, etc.

The elephant is featured on the coat of arms and flags of several nations, and it is the symbol of the Republican Party.



The characteristics of sociability, exemplary behavior, nurturance and loyalty have also been associated with the elephant giving rise to the elephant being featured in children’s films and stories.

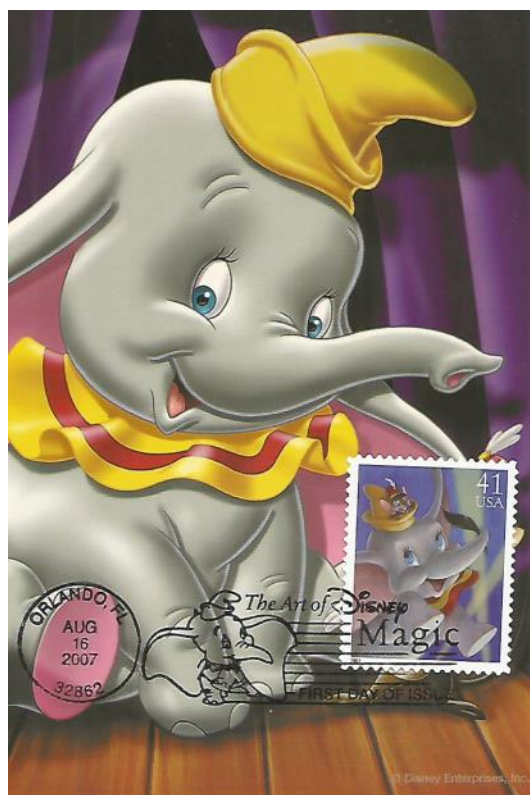
Stamp: Elephant, Scott #5714

Postcard: “Big Gratulation”, published by Janosch

Postmark: digital color pictorial FDOI, Hohenwald, TN 8/12/2022

The most famous elephant movie is Walt Disney’s “Dumbo”. In this 1941 animated fantasy film, a young circus elephant is cruelly treated until it is discovered that with his big ears, he is able to fly.

Elephants have also been featured in literature. Jules Verne’s “Five Years in a Balloon” is an adventure novel about imaginary explorers in Africa.



Stamp: “Dumbo” from the Art of Disney series, Scott #4194

Postcard: “Dumbo”, published by Walt Disney

Postmark: pictorial FDOI, Orlando, FL 8/16/2007



Stamp: “5 Semaires en Ballon” (5 Years in a Balloon) from the Jules Verne issue, Scott #

Postcard: African Elephants, published the Chicago Natural History Museum

Postmark: pictorial FDOI, Monaco, 6/7/1955

The United States Postal Service has issued five different stamps that feature an elephant. This page features maximum cards that use some of these stamps.

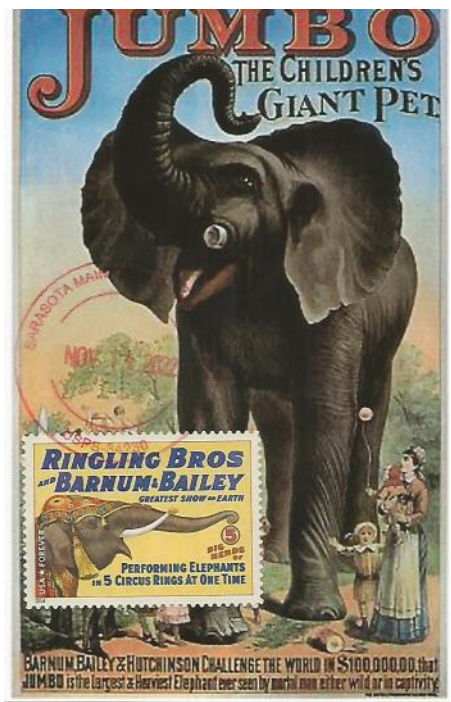
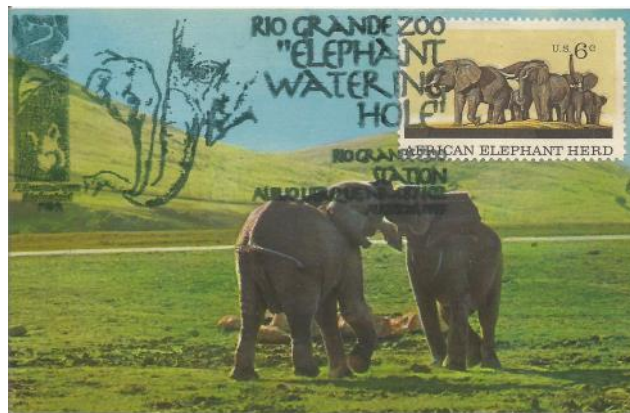


Stamp: African Elephant Herd from the Natural History issue, Scott #1388
Postcard: Elephants, published by Benedikt Taschen Verlag
Postmark: pictorial "Buxmont Stamp Club Station," Warminster, PA 3/5/2000



Stamp: African Elephant Herd, Scott #1388
Postcard: Elephants with young, published by Euredition
Postmark: pictorial "MILCOPEX Station," Milwaukee, WI 9/20/1996

Stamp: (right) African Elephant Herd, Scott #1388
Postcard: Elephants sparring, published by S.E.N.C. Mfg. & Dist. Company
Postmark: pictorial "Rio Grande Zoo Station" Albuquerque, AZ 8/26/1995

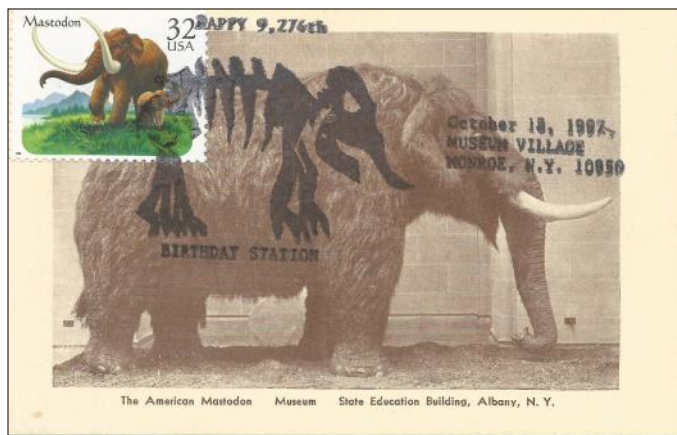


Stamp: Ringling Brothers Barnum Bailey Circus Poster, Scott #4904
Postcard: "Jumbo", published by Café Press
Postmark: Sarasota, FL 11/14/2022



Stamp: Barnes Circus Poster, Scott #4901
Postcard: Circus Elephant, published by Café Press
Postmark: pictorial "Diwali Festival Station", New York, NY 10/5/2013

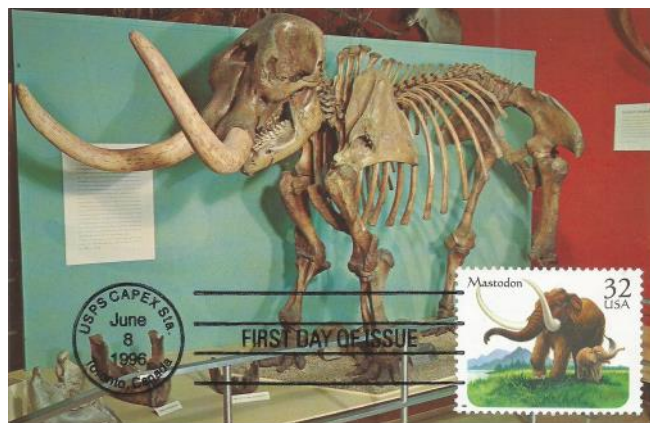
The three species of elephants living today are the only surviving members of the family Elephantidae with there being more than 189 extinct members of the order Proboscidea (trunked mammals). The most familiar of the extinct Proboscidea are the Mammoth and the Mastodon. Mastodons primarily inhabited North and Central America up to until 10 or 11 thousand years ago.



Stamp: Mastodon, Scott #3079

Postcard: American Mastodon, NY State Museum, published by C F Williams & Sons, Inc.

Postmark: "Happy 9,274th Birthday Station", Monroe, NY 10/18/1997

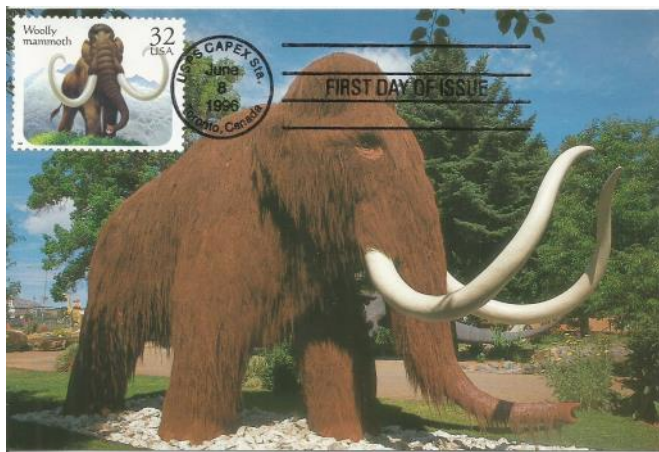


Stamp: Mastodon, Scott #3079

Postcard: Mastodon Skeleton, Cleveland Museum of Natural History, published by Joseph Morsella

Postmark: FDOI, "CAPEX Station", Toronto, Canada 6/8/1996

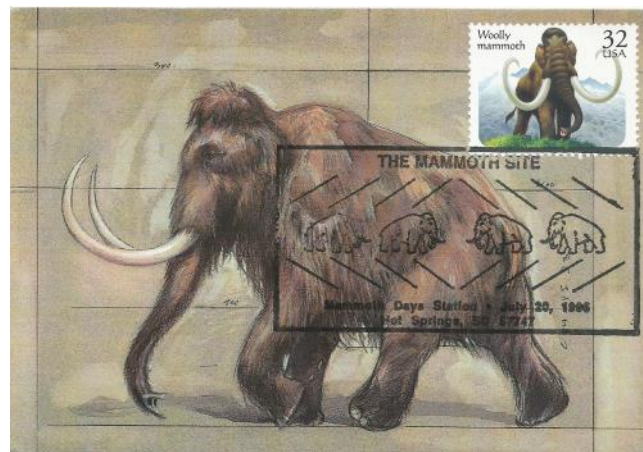
It is thought that Mammoths first appeared in Africa 5 million years ago. Numerous subspecies developed as the mammoth moved north, inhabiting much of Eurasia and eventually entering into the Americas. Mammoths seem to have become extinct only three or four thousand years ago, with climate change and human hunting thought to be the primary reason for their demise. Mastodons and Mammoths are only distantly related.



Stamp: Mammoth, Scott #3078

Postcard: Woolly Mammoth, published by Great Mountain Wrest Supply

Postmark: FDOI, "CAPEX Station", Toronto, Canada 6/8/1996



Stamp: Mammoth, Scott #3078

Postcard: Mammoth, illustration by Benoit Clarys, published by Editions du Cedarc (France)

Postmark: "Mammoth Days Station", Hot Springs, SD 7/20/1996

Colorado Through Maximum Cards

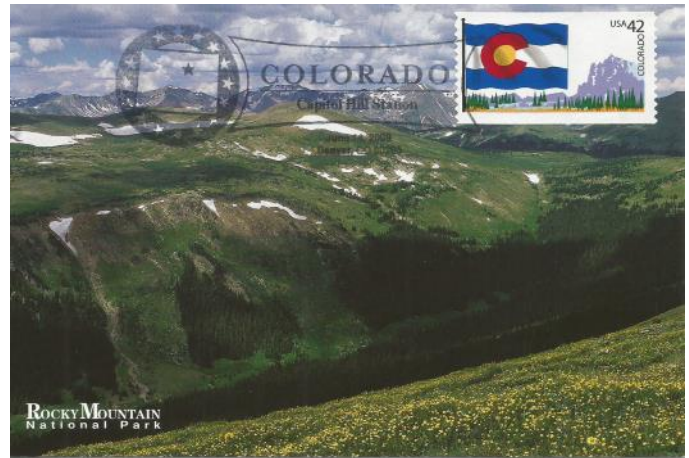
In our fifth installment of viewing each of the 50 states within the United States of America, Colorado comes up next. Colorado was admitted to the Union in 1876 as the 38th state by Proclamation 230 signed by Ulysses S Grant. As this was the 100th anniversary of the signing of the Declaration of Independence, Colorado has been nicknamed “The Centennial State”.

Colorado is blessed with a variety of landscapes that include mesas, canyons, high plains, deserts, rivers, and forests. But it is most recognized as a mountain state with much of the Southern Rocky Mountains falling within the state.

Stamp: Colorado Flag from the “Flags of Our Nation” Series, Scott #4280

Postcard: Forest Canyon in Rocky Mountains National Park, published by First Light Publishing Co.

Postmark: pictorial (map), FDOI, “Capital Hill Station, Denver, CO 6/14/2008

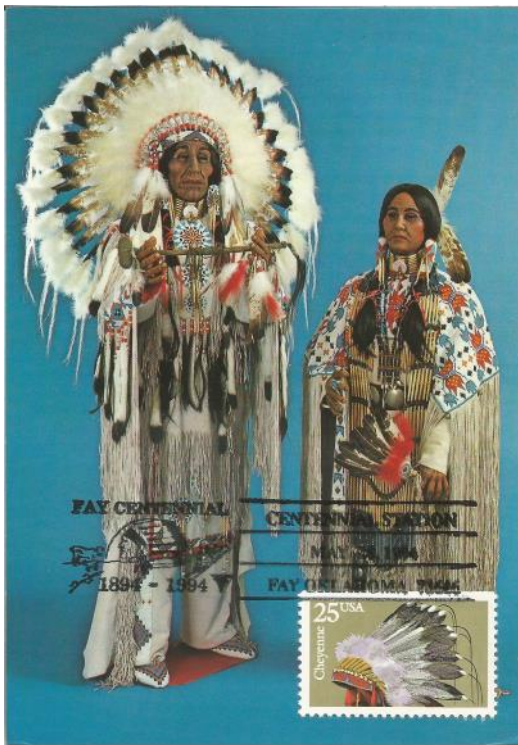


The eastern edge of the Rockies was a migratory route for the early peoples that spread across the Americas. Evidence suggests that the area has been populated for at least 13,000 years. Native American tribes that have inhabited the area that is today Colorado include the Utes, Apache, Comanche, Arapaho, Cheyenne, and the ancient Pueblo.

Stamp: (left) Cheyenne Wat Bonnet, Scott #2501

Postcard: Sculpture of Chief and Cheyenne Squaw, published by Western Originals

Postmark: pictorial “Centennial Station, Fey, OK 5/28/1994



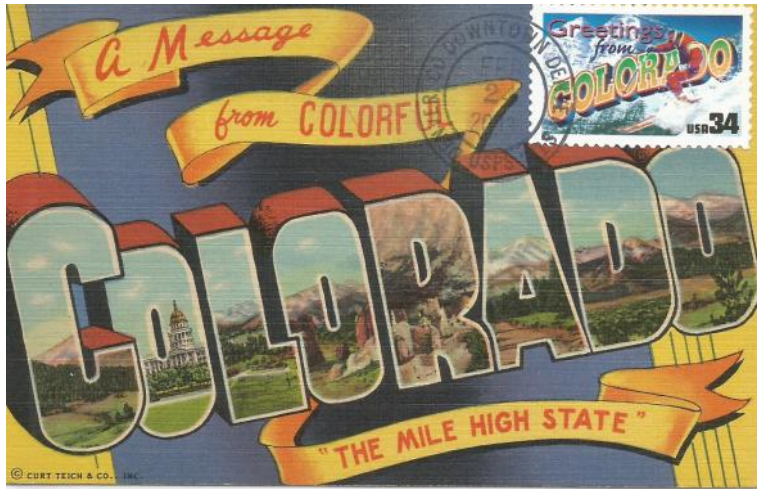
The Colorado flag was adopted in 1911 and was revised in 1964. The blue represents the sky. The white represents the peaks. The “C” stands for 3 things: Colorado, Centennial, & Columbine. The gold in the center represents the sun and the gold mined. The red “C” reminds us of the “ruddy” earth of the state.



Stamp: Colorado Flag, Scott #4280

Postcard: Colorado Flag, published by Zazzle

Postmark: circle-date, Denver, CO 11/24/2008



With its numerous national parks, monuments, recreation areas, and historical sites, Colorado is popular with vacationers. The Rocky Mountains are a huge draw. Vistas like Maroon Belles and Maroon Lake (below) are stunning.

Stamp: Greetings from Colorado, Scott #3566

Postcard: Colorado, published by Sanborn Souvenir Co.

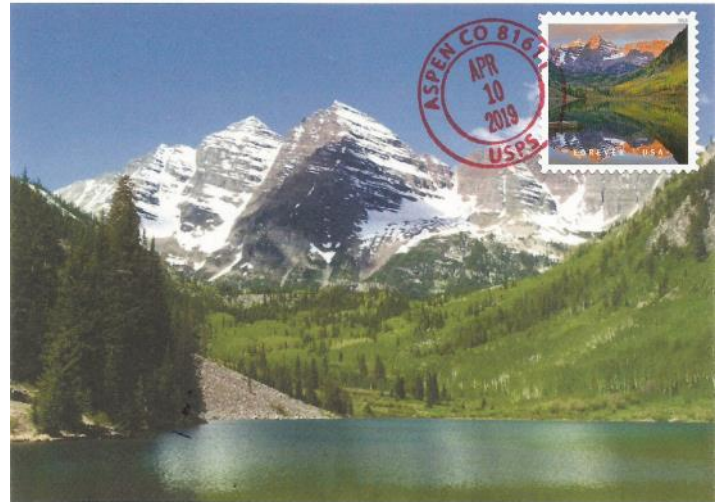
Postmark: Denver, CO 2/24/2013

Stamp: (right) Maroon Bells from the "O, Beautiful" issue, Scott #52981

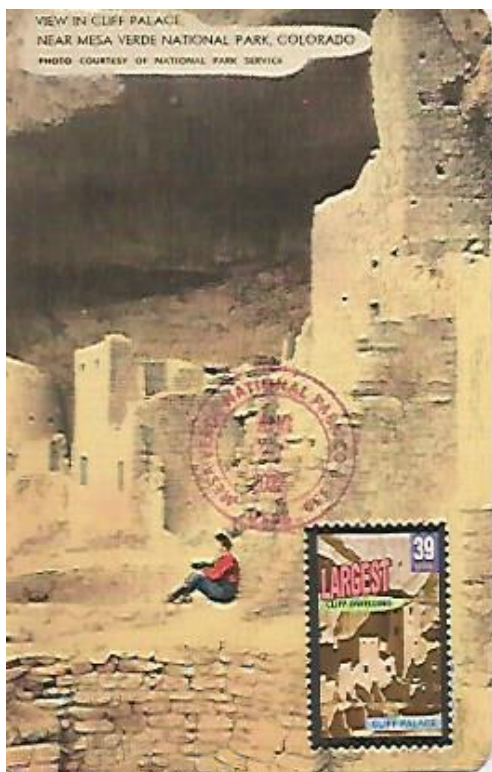
Postcard: Maroon Bells and Maroon Lake, published by Zazzle

Postmark: Aspen, CO 4/10/2019

Pack burrow racing (WHAT?) is the official Colorado sport, but mountains plus winter snow fall equals skiing! Resort towns of Aspen, Winter Park, Breckenridge, Snowshoe, Vail, etc. are some of Colorado's top ski areas.



There are four national parks and five national monuments within the state of Colorado. The most visited park is Rocky Mountain National Park. The park is 415 square miles of spectacular mountain environments, including alpine lakes, meadows and towering mountain peaks of which Long's Peak is the highest at 14,259 feet.

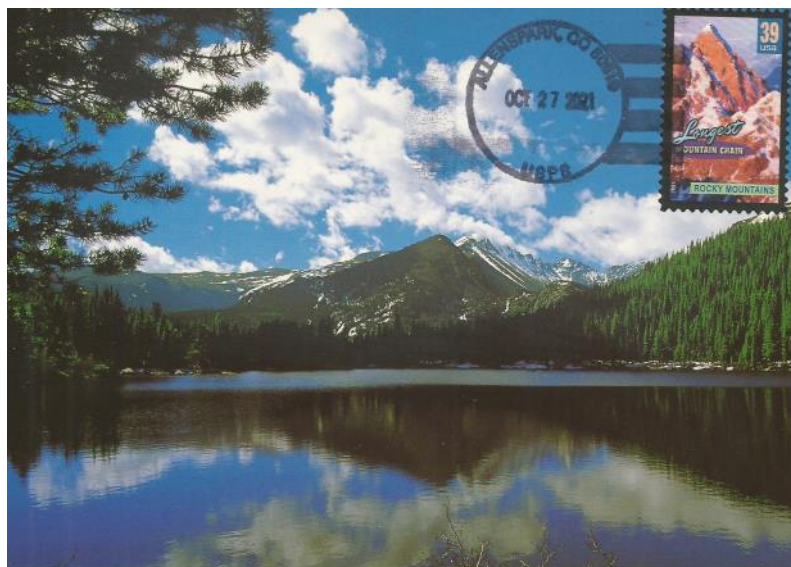


Stamp: “Cliff Palace, Largest Cliff Dwellings from the Wonders of America “ issue, Scott #4039

Postcard: Cliff Palace, Mesa Verde National Park, published by MWM

Postmark: circle-date, Mesa Verde National Park, CO 8/27/2022

Colorado’s Mesa Verde National Park is a UNESCO World Heritage Site that contains some of the US’ best-preserved archeological sites. There are 26 pueblos located in the park. With its 25 rooms and 23 kivas, Cliff Palace was home to ancestral Pueblo Native Americans for 700 years.



Stamp: “Rocky Mountains, Longest Mountain Chain” from the “Wonders of America” issue (picturing Longs Peak in the distance), Scott #4062

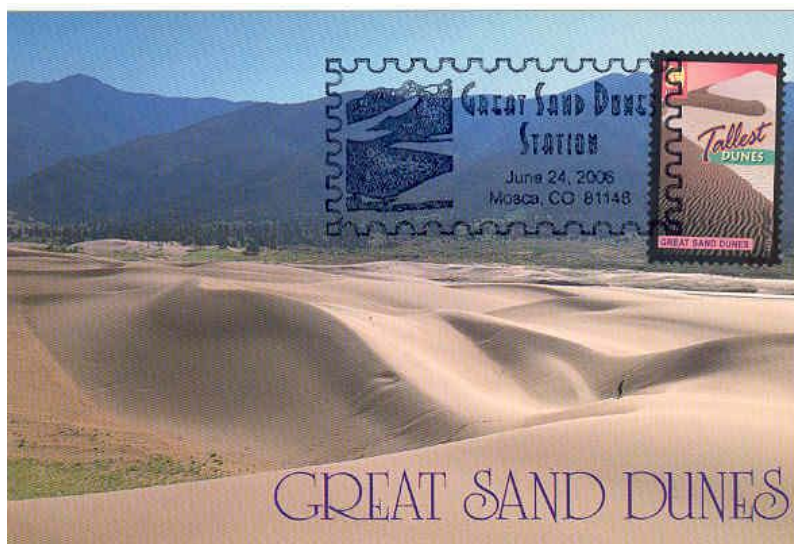
Postcard: Bear Lake & Long’s Peak in distance, published by Impact

Postmark: circle-date, Allenspark, CO 10/27/2021

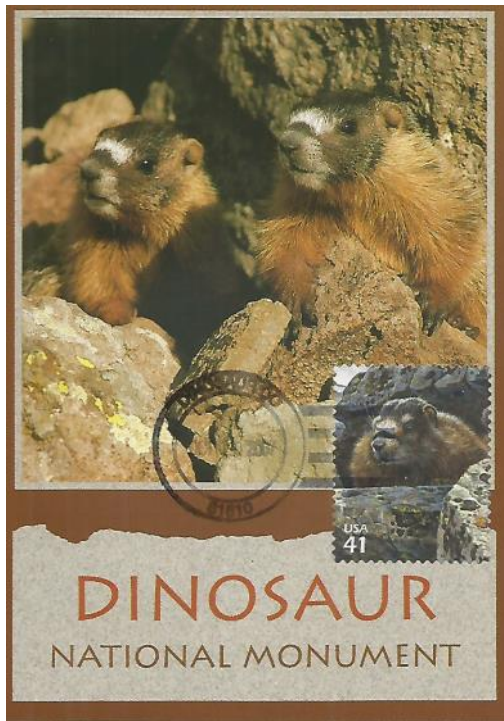
Stamp: “Tallest Dunes, Great Sand Dunes”, from the “Wonders of America” issue, Scott #4037

Postcard: Great Sand Dunes, published by H.S. Crocker Co.

Postmark: pictorial FDOI, Great Sand Dunes Station”, Mosca, CO 6/24/2006



Colorado’s Great Sand Dunes National Park’s 700 foot high dunes offer the opportunity for unique recreational activities such as sand sledding and sand boarding. In addition to the dunes, the park has forests, grasslands, alpine tundra, lakes and wetlands.



Whether one is interested in science, adventure, history or scenery Colorado's Dinosaur National Monument offers it all. Dinosaurs once roamed here and their fossils can now be seen embedded in the rocks. The Carnegie Quarry has nearly 1,500 dinosaur fossils that can be viewed. Hiking, swimming, rafting, and boating can be done in the park's canyons and rivers. There are ancient petroglyphs and a homesteader's ranch. The park is also rich in wildlife. Yellow-bellied marmots can be seen sunning themselves on rocks above their dens along segments of the park's roads.

Stamp: Yellow-bellied Marmot from the 2007 Alpine Tundra Wildlife issue, Scott #4198c

Postcard: Yellow-bellied Marmot, published by Impact

Postmark: circle-date, Dinosaur, CO 10/10/2007

With its diverse ecosystems, Colorado is home to a vast array of flora and fauna. The US Postal Service's 2007 Alpine Tundra Wildlife issue featured many of the Colorado wildlife that can be found in its highlands. The official first day of issue site for this issue was Estes Park, Colorado. Estes Park is the east gateway town to the Rocky Mountain National Park. Estes Park's Stanley Hotel was the inspiration for Stephen King to write the novel *The Shining*. He checked into the hotel in 1973 for a one-night stay with his wife.

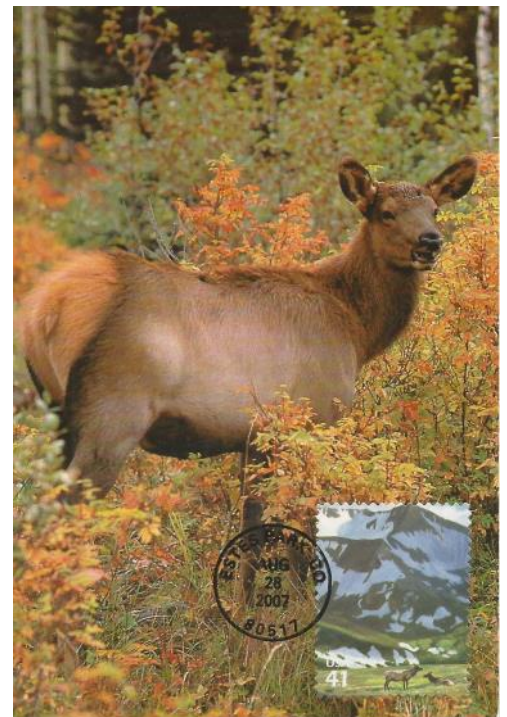
Maximum Cards Using Stamps from the Alpine Tundra Wildlife Issue



Stamp: Golden Eagle, Scott #4198b

Postcard: Golden Eagle,, published by Imprimeries Maury

Postmark: official FDOI, Estes Park, CO 8/28/2007



Stamp: Elk, Scott #4198a

Postcard: Elk, published by Photo Décor,

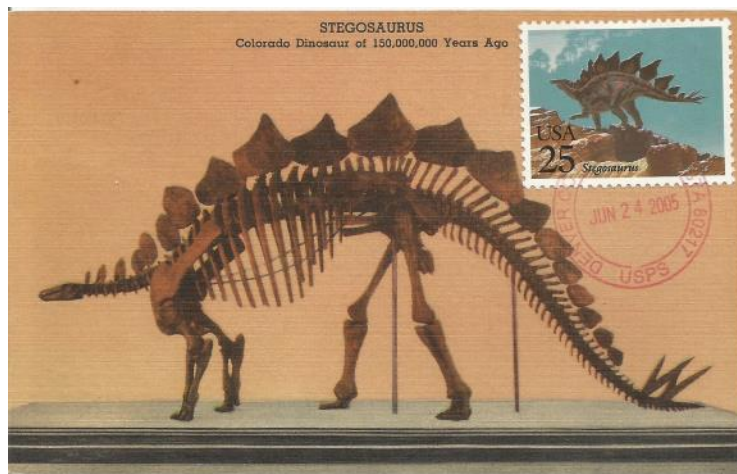
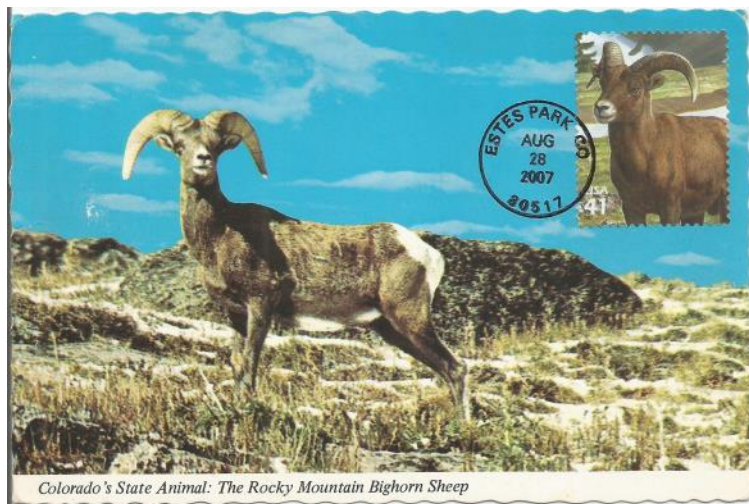
Postmark: FDOI, Estes Park, CO 8/28/2007

Bighorn Sheep (*Ovis canadensis*) are the official state mammal of the state of Colorado. Currently, it is thought that there are three species of bighorn sheep in North America, one of which is the Rocky Mountain Bighorn Sheep that is found from British Columbia to Arizona.

Stamp: (right) Bighorn Sheep, Scott #4198e
Wildlife issue, Scott #4198c

Postcard: Bighorn Sheep, published by Cooper Postcard Co.

Postmark: FDOI, Estes Park, CO 8/28/2007



Stamp: (left) Stegosaurus, Scott #2424

Postcard: Stegosaurus, Colorado Museum of Natural History, published by C T Art Colortone

Postmark: circle-date, Denver, CO 6/24/2005

The Colorado Hairstreak (*Hypaurotis crysalus*) is a montane butterfly native to the southwestern United States and northern Mexico. Living in oak scrubland, it depends upon the Gambel oak which is both the favorite roost of adults and the usual food source for caterpillars. Adults feed on tree sap and honeydew secreted by other insects. The Hairstreak was selected as the official Colorado insect in 1996.

Stamp: CO Hairstreak Butterfly, Scott #5568

Postcard: CO Hairstreak Butterfly, published by Zazzle

Postmark: official, 4-bar FDOI, Estes Park, CO 3/9/2021

Not every state legislature has passed a bill declaring their state dinosaur. However, Colorado has selected the stegosaurus to represent them. The stegosaurus lived in the Late Jurassic era. Its most notable feature was its upright plates on its back which may have been used for protection and/or for regulating its temperature. It also had spikes at the end of its tail. The largest of the 3 recognized stegosaurus reached a length of 23 feet.





The lark bunting (*Calamospiza melanocorys*) is a small songbird, with a short, thick, bluish bill. Males and females look similar and are grayish brown with white stripes. The breeding male, however, has a black body with a large white patch on the upper part of the wing. Lark buntings primarily forage on the ground, mainly eating insects in summer and seeds in winter. Their breeding habitat is prairie regions in central Canada and the mid-western United States. In the autumn, they migrate in flocks to winter in southern Texas, Arizona and northern Mexico. In 1931, the lark bunting was selected as the state bird of Colorado.

Stamp: Lark Bunting, CO State Bird, Scott #1958

Postcard: Colorado State Bird, published by Capital Engravings

Postmark: pictorial "Bringing a Valentine Message", Loveland, CO 2/14/1993



The columbine became the state flower of Colorado in 1899.

Stamp: Colorado Statehood Centennial, Scott #1711

Postcard: "The Beautiful Columbine, Colorado's State Flower", published by Sanborn Souvenir Co.

Postmark: circle-date, Littleton, CO, Columbine Hills Branch, 1/8/1988



The Rocky Mountain Columbine or the Colorado blue columbine (*Aquilegia coerulea*) is a herbaceous perennial plant that is found at elevations of 7,000 to 12,000 feet. They are variable in color, with blue and white being the most recognized.

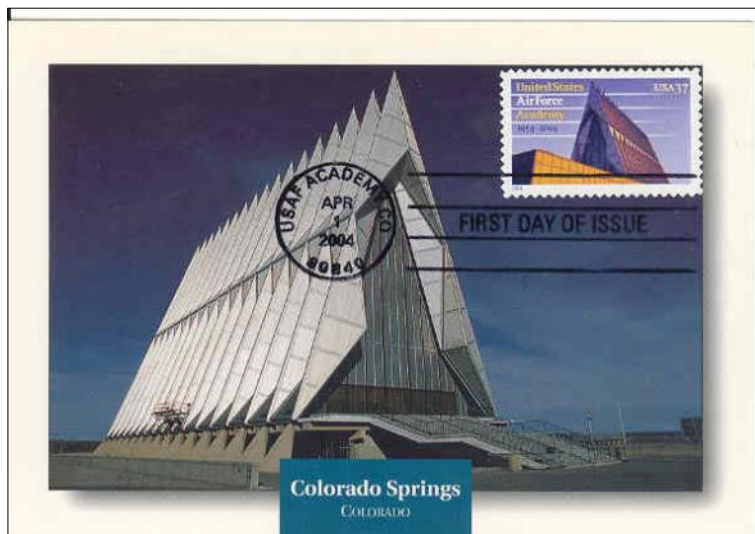
While the blue spruce is the official Colorado state tree, the aspen may be more readily identified with the state. Most aspens grow in large clonal colonies, derived from a single seedling making the colony a single organism with the same DNA.

Stamp: "Largest Plant, Quaking Aspen" from the "Wonders of America" issue, Scott #4072

Postcard: "Colorado Columbines Growing Along the Aspens", antique postcard published by Sanborn Souvenir Co.

Postmark: circle-date, Aspen, CO, 2/9/2011

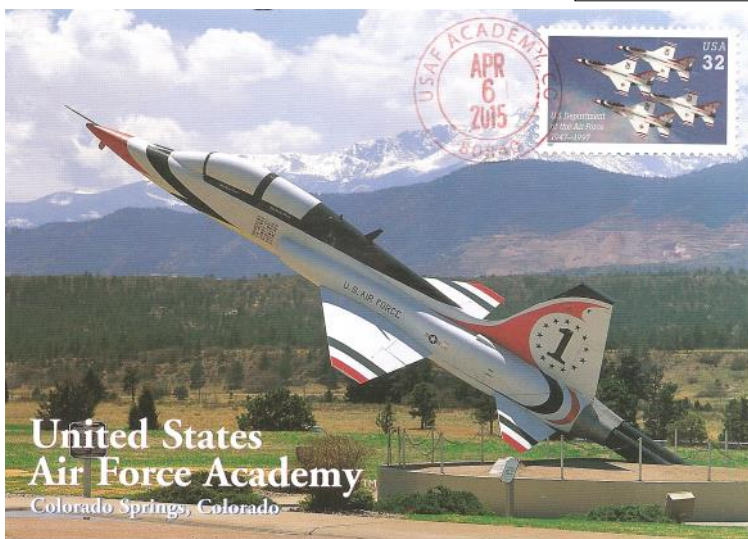
The largest sectors in Colorado's economy are manufacturing, mining, agriculture, and tourism. The military also has a large presence, especially in the Colorado Springs area. The Army, Air Force, and Space Force all have bases in Colorado Springs. Also located in Colorado Springs is the USAF Academy with its Cadet Chapel, a classic and highly regarded example of modernist architecture.



Stamp: (above) United States Air Force Academy, Scott #3838

Postcard: U.S. Air Force Academy Cadet Chapel, published by Altitude Publishing

Postmark: FDOI, USAF Academy, CO 1/1/2004



Stamp: Dept. of the Air Force, Scott #3167

Postcard: "Thunderbird Airman's Overlook" published by Impact

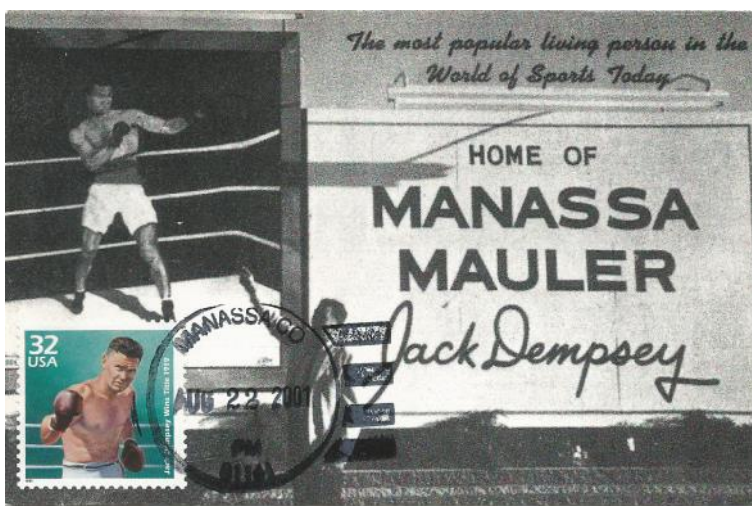
Postmark: USAF Academy, CO 4/6/2015

Stamp: Lon Chaney, Scott #2822

Postcard: Lon Chaney, publ. by Pomegranate

Postmark: FDOI San Francisco, CA 4/27/1994

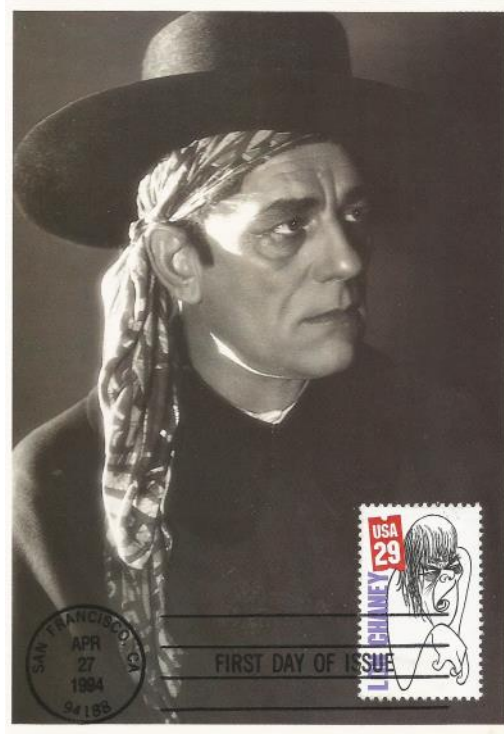
Famous people from Colorado include boxer, Jack Dempsey, and silent film star, Lon Chaney, Sr.



Stamp: Jack Dempsey, Scott #3183m

Postcard: Manassa billboard, unknown publisher

Postmark: Manassa, CO 8/22/2001



Travel and Maximum Cards—Bonaire

By Terry Watson

Bonaire is a very small island country located in the Caribbean's Leeward Antilles, about 50 miles north of Venezuela. It is only 24 miles long from north to south and 3 to 5 miles wide from east to west. Its population is around 20,000 people. It only has one high school and no stop lights. However, there are 80 roundabouts.

Bonaire is one of the Dutch ABC islands of Aruba, Bonaire, and Curacao. Bonaire was part of the Netherlands Antilles until the country's dissolution in 2010. It then became a "Caribbean public body", or a special municipality within the country of the Netherlands. This means that, although the island is organized in a way that is similar to that of a municipality in the Netherlands, laws and regulations are different to those in the European Netherlands

While on a recent cruise, I was able to realize a number of maximum cards on a day visit to Bonaire. The post office in the capital city of Kralindijk is located just a few blocks from the cruise port and there are many nearby souvenir shops from which to buy postcards. My strategy was to first visit the Kralindijk post office to see what stamps were available. The post office offered a pane of 10 different tourist related stamps and stamps of flamingoes. I made a note of these topics and next went to a nearby shop where I found 9 postcards that matched up nicely with the stamps available at the post office. After preparing the cards for cancellation, I bought the stamps and the clerk let me cancel my cards. Below are some of the realized maximum cards.

Flamingoes are the national bird of Bonaire and can be found in the shallow Goto Lake in Washington Slagbaai National Park on the island's north side and on the salt pans in the south..



Stamp: Flamingo from the Bonaire Highlights miniature sheet.

Postcard: Flamingoes, published by Vista Blue Bonaire

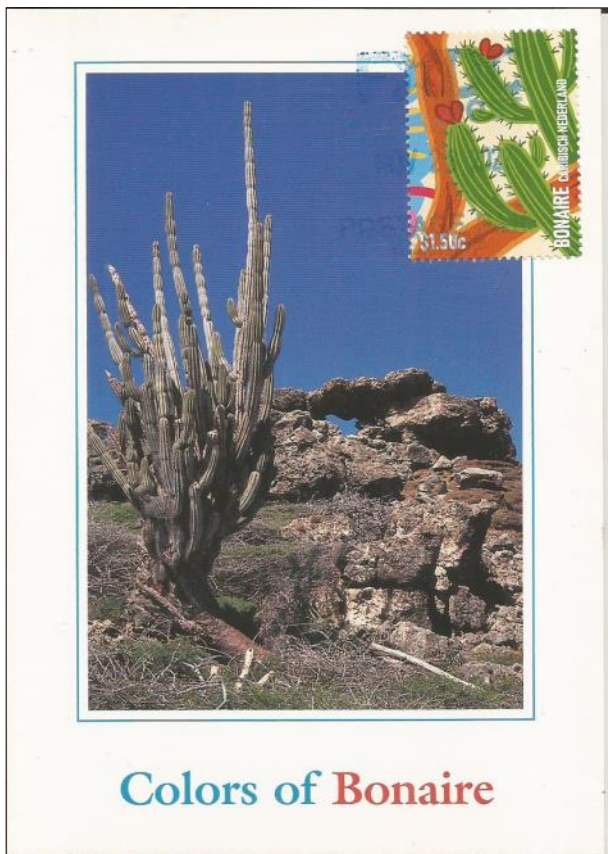
Postmark: FXDC Post, Postage Paid, Bonaire, 11/28/2022
(FXDC stands for Flamingo eXpress Dutch Caribbean)



Stamp: Flamingo semi-postal

Postcard: Flamingoes, published by Vista Blue Bonaire

Postmark: FXDC Post, Postage Paid, Bonaire, 11/28/2022



Stamp: Cactus from the Bonaire 2022 Highlights miniature sheet

Postcard: Ceru-Bentana, Washington-Slagaai National Park, published by FSC

Postmark: FXDC Post, Postage Paid, Bonaire, 11.28/2022

Stamp: Donkey from the Bonaire 2022 Highlights miniature sheet

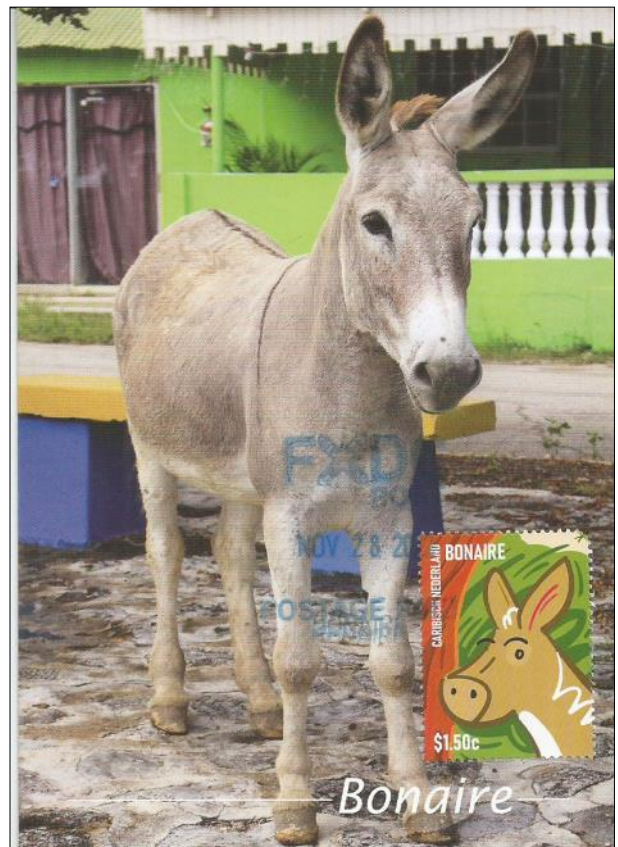
Postcard: published by Vista Blue Bonaire

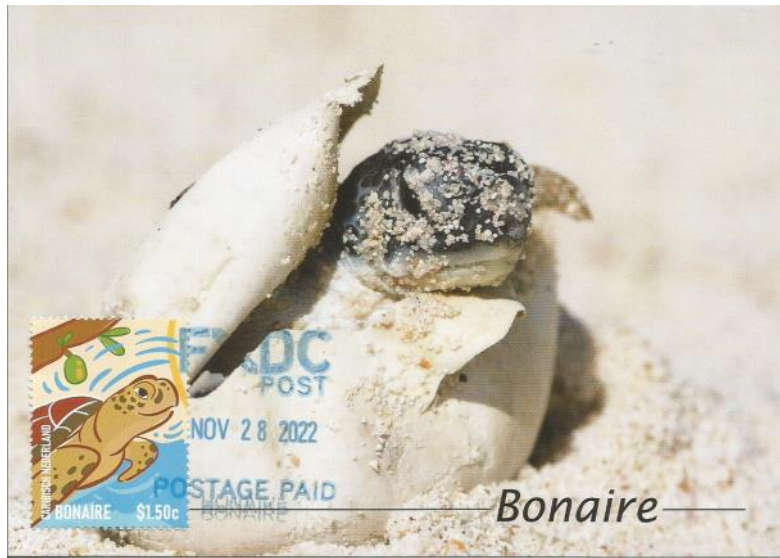
Postmark: FXDC Post, Postage Paid, Bonaire, 11/28/2022

Donkeys naturally live in countries where it is warm and dry. Free-range donkeys are a common sight on the island. There is also a donkey refuge on Bonaire that is populated with over 700 donkeys. Recently, there has been unprecedented rainfall on the island and is threatening the island's donkey population.

Bonaire's climate is tropical semi-arid. It is hot all year round, with the temperature fluctuating between 86 °F and 91 ° F (30 °C and 33 °C) (86 °F and 91 °F) during the day. Thus, its vegetation primarily consists of shrubs and cacti.

Cacti are frequently used for fences, an attractive, cheap, and effective barrier.





Stamp: Turtle from the 2022 Bonaire High lights issue

Postcard: Hatching turtle. published by Vista Blue Bonaire

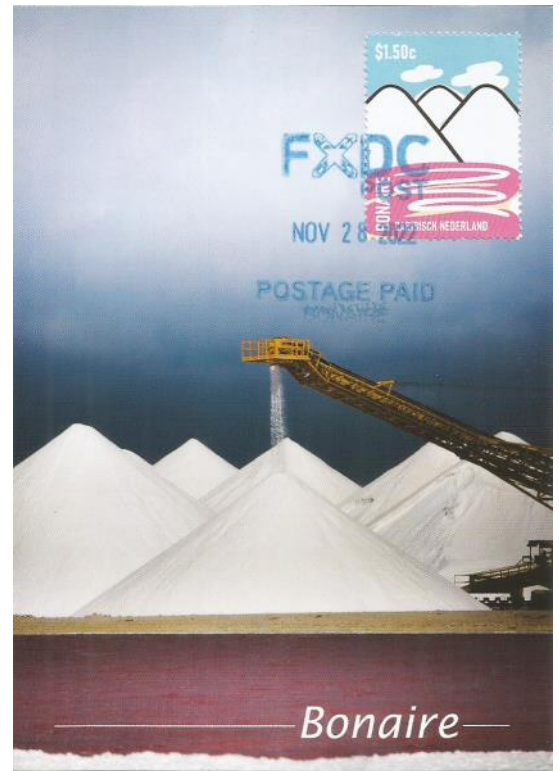
Postmark: FXDC Post, Postage Paid, Bonaire, 11/28/2022

Stamp: Salt Production from the Bonaire Highlights issue

Postcard: Salt Pyramids, published by Vista Blue Bonaire

Postmark: FXDC Post, Postage Paid, Bonaire, 11/28/2022

Since the takeover of Bonaire by the Dutch four centuries ago, salt has been an important export. Initially worked by slaves, today the “salt pyramids” of the industry can be seen on the south side of the island.



Water sports are the major draw for tourists of Bonaire. Surfing, sailing, fishing, wind surfing, and snorkeling are popular. Bonaire is famed as one of the best Caribbean Scuba diving destinations. Bonaire hosts amazing coral reefs and several shipwrecks. There are a number of resorts that cater to scuba divers. Many of the dive sites are just off shore and no boat is needed to get to these locations.

Stamp: Surfing

Postcard: beach scene, published by Vista Blue Bonaire

Postmark: FXDC Post, Postage Paid, Bonaire, 11/28/2022



Find an International Friend and Collaborate!

Sometimes it is difficult for us to find concordant postcards in our local environment. However, sometimes there are others in another country that may have access to postcards that are a perfect match. We just have to have the connection. Hubert Engle, an exchange partner for many years, has been most helpful in supplying me with great postcards that match up with USPS stamps. We have worked together many times to realize great maximum cards that would have been difficult to create individually. One of our most recent collaborative efforts was with the USPS' Pony Cars stamp.

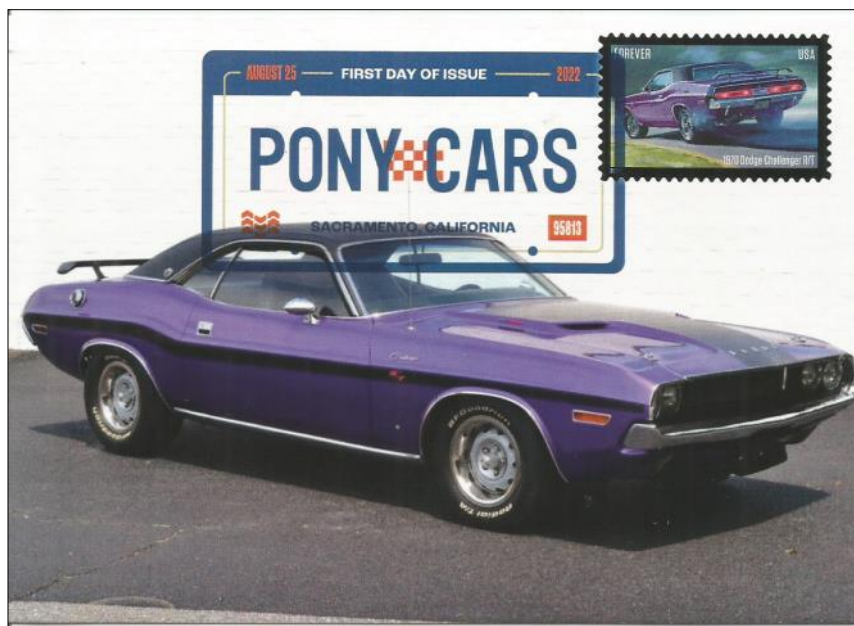
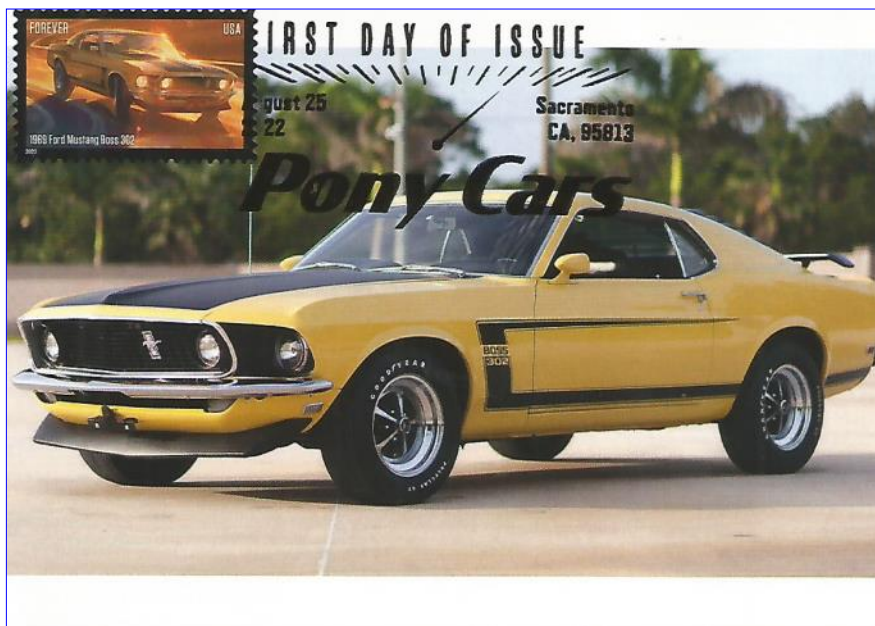
Hubert was able to supply me with many postcards that matched up perfectly with the Pony Cars. He supplied me with the postcards and I supplied him with the stamps and first day postmarks. After the creation of these cards, half of the cards were then his and half were mine.

Stamp: 1969 Ford Mustang Boss302, from the Pony Cars issue, Scott #5715

Postcard: 1969 Ford Mustang Boss 302, published by Imp-Medialogoik (Germany)

Postmark: pictorial FDOI, Sacramento, CA 8/5/2022

The Mustang Boss 302 was a V-8, high performance, 2-door, fastback-coupe variant of the original Mustang. It was produced for the Trans Am Racing Series.



Stamp: 1970 Dodge Challenger R/T from the Pony Cars issue, Scott #5716

Postcard: 1970 Dodge Challenger R/T published by Imp-Medialogoik (Germany)

Postmark: digital Color pictorial FDOI, Sacramento, CA 8/5/2022

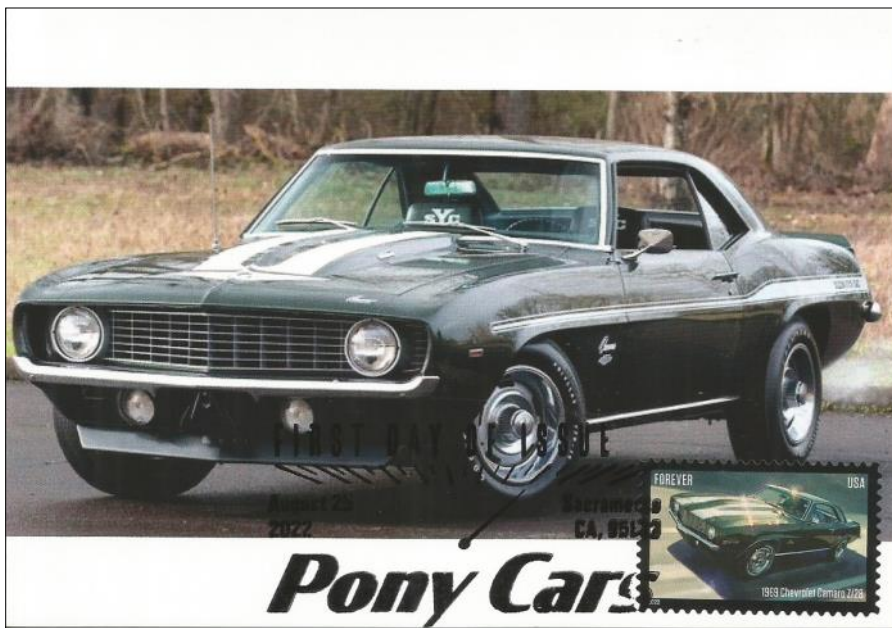
The 1970 Challenger R/T's 3 models were a 2-door hardtop, a Special Edition 2-door hardtop and a convertible. Both 3 and 4 speed manual transmission were options. It came in a number of engine sizes with the largest being a 440 cubic inch, RB V-8.

Stamp: 1969 Chevrolet Camaro Z/28, Scott #5717

Postcard: 1969 Camaro Z/28, published by Imp-Medialogoik

Postmark: pictorial FDOI, Sacramento, CA 8/5/2022

The Z/28 was a high-performance Camaro model that came with stripes on the hood and trunk, styled rally road wheels, and a special 302 cu in (4.9 L) V8 engine that had been developed for Trans Am series racing.



Stamp: 1967 Mercury Cougar XR-7 GT, Scott #5718

Postcard: 1967 Cougar XR-7 GT, published by Imp-Medialogoik

Postmark: pictorial FDOI, Sacramento, CA 8/5/2022

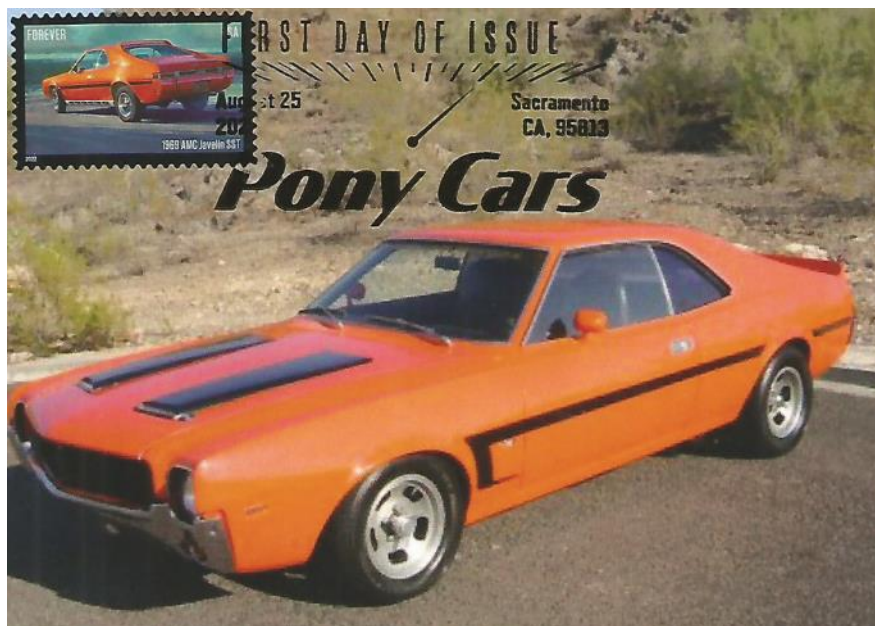
The Mercury Cougar was intended as a "posh" pony car with a market position between Ford's Mustang and its Thunderbird. The XR-7 version brought more European influences and the GT option came with a 320 horse power V-8 Marauder engine.

Stamp: 1969 AMC Javelin SST, Scott #5719

Postcard: 1969 Javelin SST, published by Imp-Medialogoik

Postmark: pictorial FDOI, Sacramento, CA 8/5/2022

The American Motors Company targeted their Javelins to a younger consumer and the 1969 version featured "Big Bad" paint including neon brilliant blue, orange, or green and additional trim options.

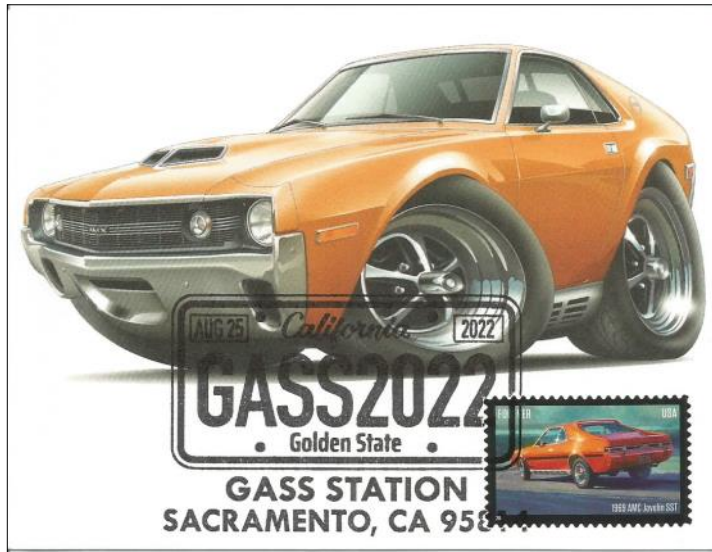
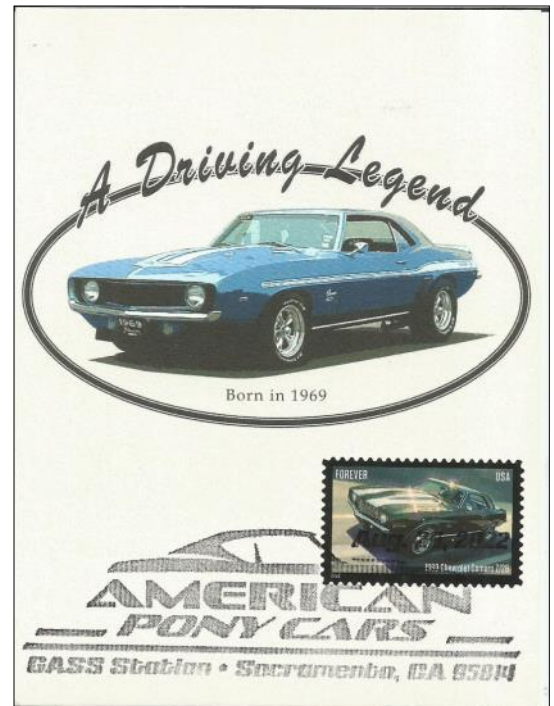


Two additional USPS pictorial postmarks were offered at the Great American Stamp Show (GASS) in Sacramento. Both were from the cleverly named “GASS Station”. One pictured a pony car and the other pictured a California auto license plate.

Stamp (right): 1969 Camaro Z/28, Scott #5717

Postcard: Chevy Camaro, “A Driving Legend” published by Zazzle

Postmark: pictorial “American Pony Cars, GASS Station”, Sacramento, CA 8/28/2022



Stamp (left): 1969 AMC Javelin SST, Scott #5719

Postcard: AMC Javelin, published by Zazzle

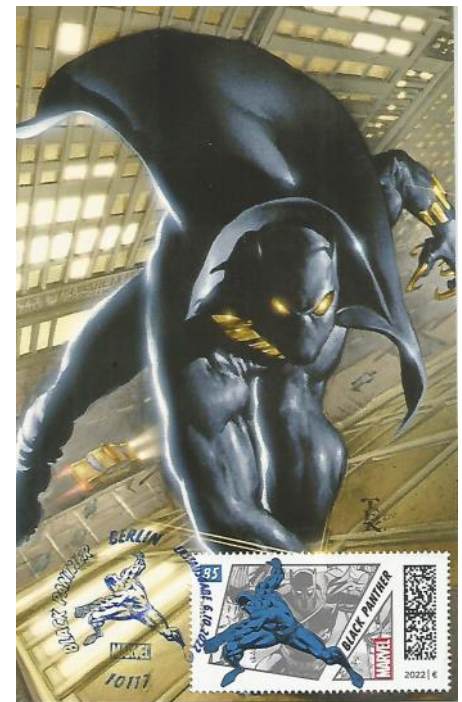
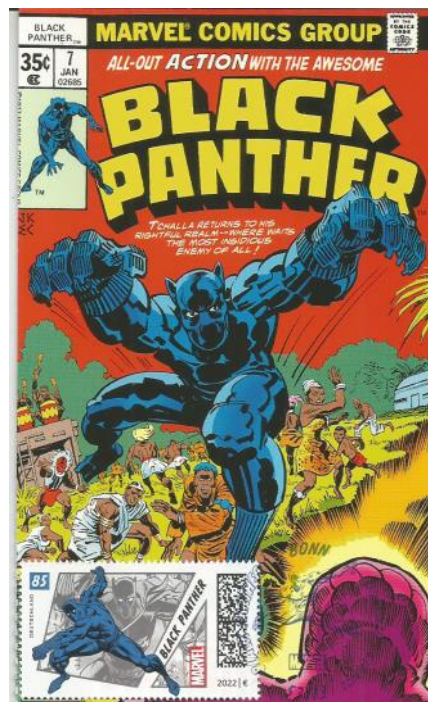
Postmark: unofficial FDOI “American Pony Cars, GASS Station”, Sacramento, CA 8/25/2022

Recent Realizations—Germany

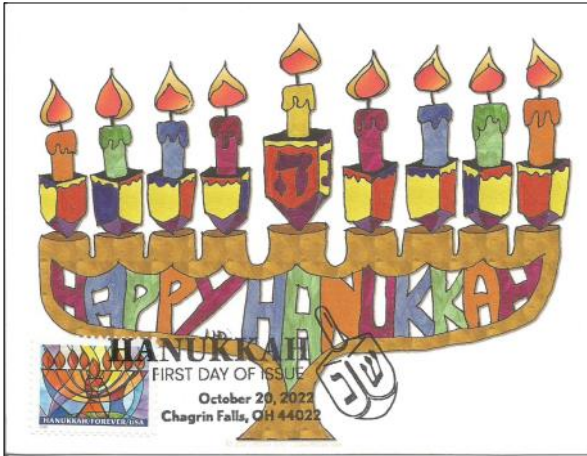
On October 6, 2022, the German Bundespost issued a stamp of the Marvel comics character, “the Black Panther”. Again, with the help of my friend and exchange partner in France, Hubert Engle, cards were realized. This time, I supplied him with the postcards while he provided the stamps and obtained the FDOI postmarks.

Postcards: #7 & #1, published by Marvel

Postmarks: pictorial FDOI, Berlin, 10/6/2022



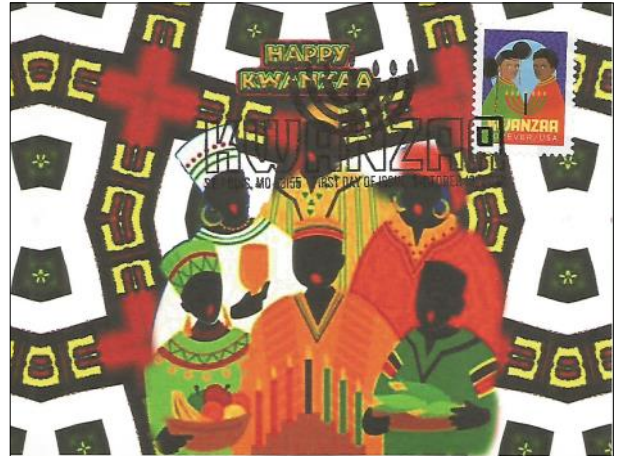
USA Recent Realizations



Stamp: Hannukah Menorah, Scott # 5739

Postcard: Hanukkah Menorah, published by Zazzle

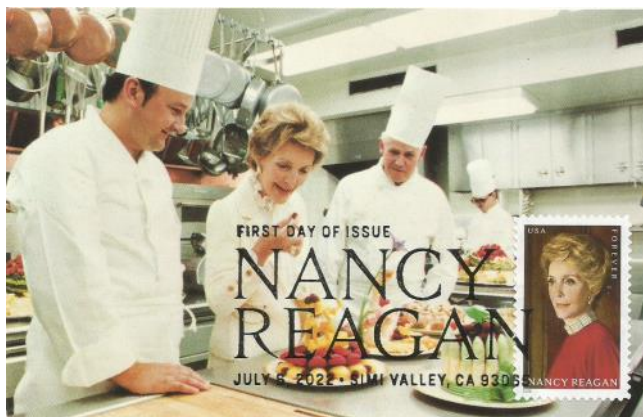
Postmark: pictorial FDOI, Chagrin Falls, OH



Stamp: Kwanzaa, Scott # 5737

Postcard: Kwanzaa, published by Zazzle

Postmark: pictorial FDOI, St. Louis, MO 10/13/2022



Stamp: Nancy Reagan, Scott # 5702

Postcard: Nancy Reagan with White House kitchen staff, published by Coral-Lee

Postmark: FDOI, Simi Valley, CA 7/6/2022



Stamp: Nancy Reagan, Scott # 5702

Postcard: Nancy Reagan at the wedding of Prince Charles & Lady Diana, published by Coral-Lee

Postmark: FDOI, Simi Valley, CA 7/6/2022

Stamp: Pete Seeger from the Music Icons series, Scott # 5708

Postcard: Pete Seeger, published by Quantity Postcards

Postmark: pictorial FDOI, Newport, RI 7/21/2022

Pete Seeger was an American folksinger and political activist who became a prominent voice for social justice which led to being “blacklisted” in the ‘50s. He won 3 Grammy Awards.



New Realizations-Mariachi Band

On July 15, 2022, the US Postal Service issued a set of five stamps that celebrate Mariachi Music, a genre of regional Mexican music. Each of the five stamps in this pane of 20 features a Mariachi musician dressed in “traje de charro”, the traditional outfit of mariachi performers. Each stamp features a musician, playing one of the five iconic mariachi instruments: guitar, guitarrón, vihuela, violin, and trumpet. The usual mariachi group today consists of as many as eight violins, two trumpets and at least one guitar, including the high-pitched vihuela and an acoustic bass guitar called a guitarrón. It is typical for all players to take turns singing lead and backup vocals.

“Son music”, a rural music genre that developed in the various regions of western Mexico, dates back to at least the 18th century. As son music evolved and became more urbanized, it became known as Mariachi. Its evolution included modifications that incorporated musical influences from other music, including polkas and waltzes. Most song lyrics are about machismo, love, betrayal, death, politics, revolutionary heroes and country life.



Stamp: Guitarist & Son, Scott # 5704

Postcard: “Fiesta at Southern Arizona Guest Ranch”, published by Lollesgard Specialty Co.

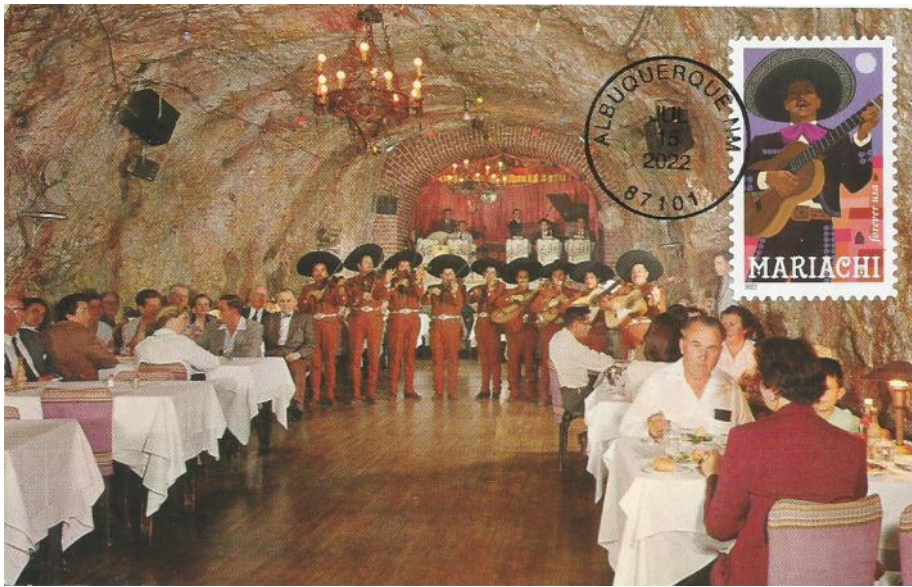
Postmark: pictorial FDOI, Albuquerque, NM 7/15/2022

Stamp: Trumpet Player, Scott # 5707

Postcard: Le Fuente Restaurant, Tucson, AZ, published by McGrew Color Graphics

Postmark: pictorial FDOI, Albuquerque, NM 7/15/2022





Stamp: Guitarist with Moon,
Scott # 5703

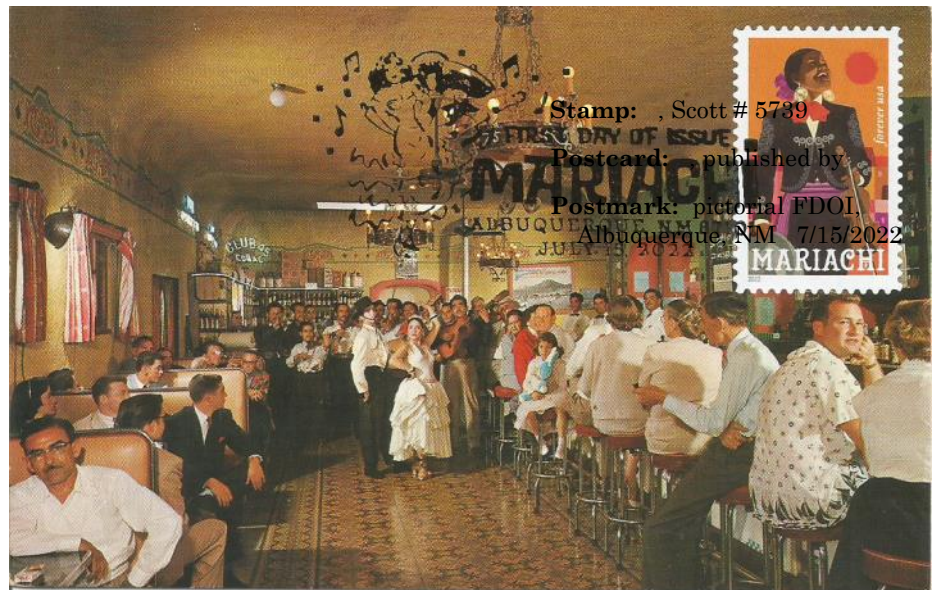
Postcard: "The Cavern Cave"
in Nogales Sonora, Mexico,
published by Petley Publishers

Postmark: circle-date FDOI,
Albuquerque, NM 7/15/2022

Stamp: Violinist and Sun,
Scott # 5705

Postcard: "World Famous
Cavern Bar" in Nogales Sonora,
Mexico, published by Petley
Publishers

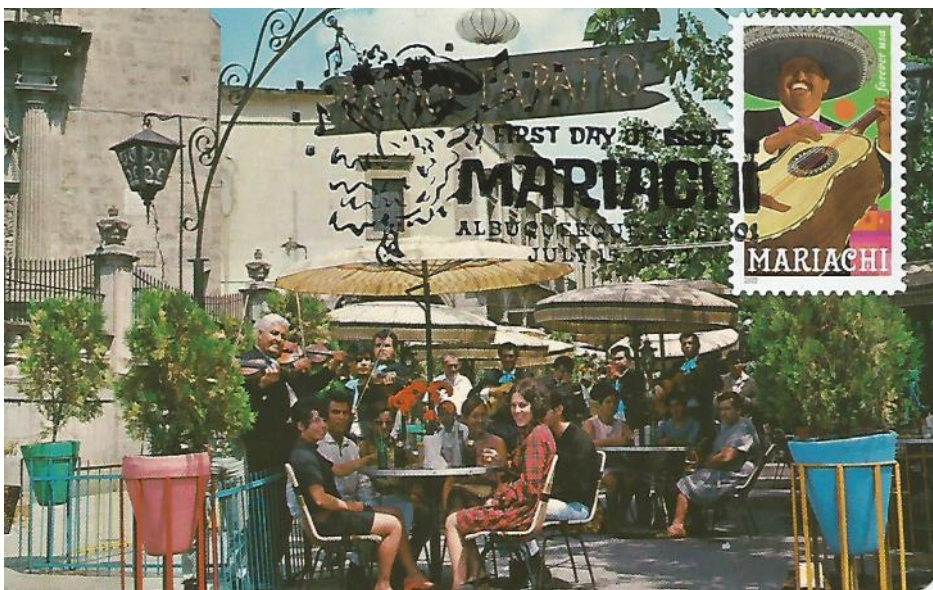
Postmark: pictorial FDOI,
Albuquerque, NM 7/15/2022



Stamp: , Scott # 5739

Postcard: published by

Postmark: pictorial FDOI,
Albuquerque, NM 7/15/2022



Stamp: Bass Guitarist,
Scott # 5706

Postcard: The Plaza of the
Mariachis in Guadalajara,
Mexico, published by Impresos
Permacolor

Postmark: pictorial FDOI,
Albuquerque, NM 7/15/2022

Recent Realizations—"Go Beyond", Buzz Lightyear

Buzz Lightyear is a sentient toy action figure character in the Disney Pixar *Toy Story* movies. The films' director wanted a G.I. Joe type figure for the movie and decided upon an astronaut character. Buzz Lightyear is voiced in the movies by Tim Allen.



The postcards used in these realizations came from *Toy Story Postcard Book*, a Hyperion Postcard Book.

Stamp (left): Buzz Lightyear (standing, feet showing)
Scott # 5709

Postcard: Toy Story, "You're mocking me, aren't you", published by The Walt Disney Co.

Postmark: digital color pictorial FDOI, Los Angeles, CA 8/3/2022

Stamp (right): Buzz Lightyear (standing, feet showing), Scott # 5710

Postcard: Toy Story, "Woody climbs back...", published by The Walt Disney Co.

Postmark: pictorial FDOI, Los Angeles, CA 8/3/2022



Stamp (left): Buzz Lightyear (running), Scott # 5711

Postcard: Toy Story, "Buzz tries to use his wrist communicator", published by The Walt Disney Co.

Postmark: pictorial FDOI, Los Angeles, CA 8/3/2022



Stamp: Buzz Lightyear (standing, feet not showing)
Scott # 5712

Postcard: Toy Story, "Woody hides behind Buzz...", published by The Walt Disney Co.

Postmark: circle-date FDOI, Los Angeles, CA 8/3/2022



MEMBERSHIP APPLICATION

For The

MAXIMUM CARD STUDY UNIT of AMERICA

Founded in 1978, the Maximum Card Study Unit (MACSU) is an independent non-profit organization dedicated to the creation, collection, exchange, enjoyment, display, and study of Maximum Cards, by spreading the knowledge of Maximaphily among its members.

Membership includes a subscription to Maximaphily USA, a quarterly journal featuring news of the maximum card world and articles by members and experts in the field.

Articles featuring topical collecting typically are richly illustrated with maximum cards and share the author's insightful knowledge of the subject and his own personal and helpful experience.

The pages providing information regarding activities of individual members allows members to place free advertising for trading, buying, selling and exchanging information. Here the opportunity to make contacts with members in other countries is provided.

There are articles evaluating maximum cards according to accepted standards, pointing out good qualities and making suggestions for improvement.

Mail bid auctions are held on occasion, featuring inexpensive cards donated by members.

Every issue provides a page or two of illustrations of the most recent maximum card creations by our members. Every member gets a chance to show his/her cards and write an article about them.

.....

MACSU Membership Application

Name: _____

Address: _____

City, State, ZIP: _____ Country: _____

Email Address: _____

Collecting Interests (Topics, countries, etc.) _____

(Indicate if you want your name and interests listed in an upcoming issue: YES: NO)

Club membership is only \$12 per year and includes a quarterly journal emailed to you. You can pay your dues via PayPal. Send your PayPal payment to **MAXICARDS@gmail.com**

Amanda Dempsey, Treasurer