

# The Quarterly Journal of the Maximum Card Study Unit

## NORTH AMERICAN MAXIMAPHILY

**Volume 41, No. 2    April/May/June 2023**

**Stamp:** Ukraine: “Free,  
Unbreakable, Invincible”  
Michel #186

**Postcard:** “War and Peace”,  
2009 photograph by Linda  
Wei-Chun on Prince Edward  
Island, Canada; post pro-  
cessed and published in  
2022.

**Postmark:** pictorial FDOI,  
Kiev, 8/24/2022



### Table of Contents

Letter from the President .....	2
Travel via Western Art & Architecture	
Maximum Cards on You Tube Video .....	3
Stamp Out War: Support Ukraine! .....	7
Connecticut Through Maximum Cards ..	14
Delaware Through Maximum Cards .....	18
Travel and Maximum Cards .....	20
Recent Realizations .....	21
Membership Application .....	30

### Board of Directors

Terry Watson:	President
Sun Yu Ng:	Vice President
Amanda Dempsey	Treasurer
George Constantourakis:	At Large
Dorin Cojocariu	At Large

## Letter From the President

I would like to take this opportunity to thank the board members of the Maximum Card Study Unit (MACSU) who are actively contributing to our hobby. Their efforts are evident in this edition of *North American Maximaphily*. This journal's first article highlights the efforts of MACSU Vice President, Sun Yu Ng, as he is creating You Tube videos displaying western art and architecture maximum cards. I encourage all to check these interesting and informative videos out at [www.youtube.com/@travelviaartarchitecturema9917](http://www.youtube.com/@travelviaartarchitecturema9917). He has also written several articles that he hopes to soon have published.

In addition to his continuing work on the popular Facebook Group site, "Maximaphily; Traditional and Non-Traditional", Dorin Cojocariu's work behind the scenes can be seen in this journal's second article, "Stamp Out War: Support Ukraine!" Our new Secretary/Treasurer, Amanda Dempsey, is actively learning the ropes of her new position. As a "This Day in History" feature, I am daily posting maximum cards on six different philatelic Face Book groups sites. Additionally, one of our journal's articles has been accepted for publication in an upcoming edition of the American Topical Association's "Topical Times". Thanks goes out to the MACSU Board! We're getting the word out on maximum cards!

You, too, can help spread the word about maximum cards. Share your cards with others. If you are a member of a postcard or stamp club, bring some of your cards to your meetings to show others. Last month, a few days after the Academy Awards Ceremony, I brought some maximum cards of Oscar-winning film stars to a meeting of the Georgia Postcard Club. Most of the attendees knew nothing about maximum cards, but they were keenly interested in them. If you are a member of such a club, consider giving a presentation on maximum cards. I have a Power Point slide show that I will gladly send to you. "Spread the word"!

### MAXIMUM CARD STUDY UNIT OF NORTH AMERICA

The Maximum Card Study Unit (MACSU) is an independent non-profit organization dedicated to the creation, collection, exchange, enjoyment, display, and study of Maximum Cards, by spreading the knowledge of Maximaphily among its members. The activities of MACSU are planned and carried on entirely by the volunteer services of its officers and members. MACSU is Affiliate # 106 of the American Philatelic Society, Chapter # 67 of the American First Day Cover Society and an affiliate of the American Topical Association.

#### **Board Members:**

Terry Watson  
President, Editor  
Lithia Springs, GA  
[terryw7633@comcast.net](mailto:terryw7633@comcast.net)

Sun Yu Ng  
Vice President  
Menlo Park, CA  
[sng94025@gmail.com](mailto:sng94025@gmail.com)

Amanda Dempsey  
Treasurer  
Forest Park, IL  
[suozib@gmail.com](mailto:suozib@gmail.com)

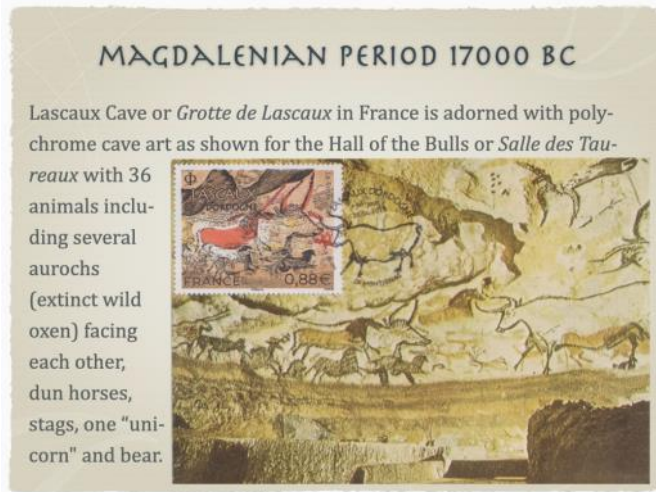
George Constantourakis  
At Large  
Montreal, Canada  
[geo.constant@sympatico.ca](mailto:geo.constant@sympatico.ca)

Dorin Cojocariu  
At Large  
Herndon, VA  
[dorindorinco@gmail.com](mailto:dorindorinco@gmail.com)

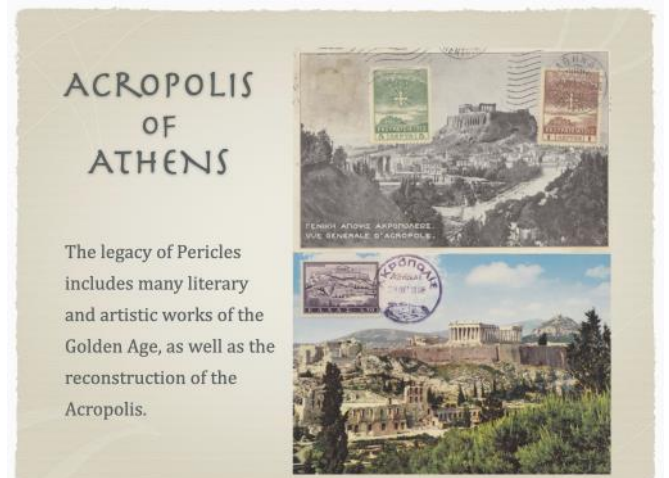
## Travel via Western Art & Architecture Maximum Cards on You Tube

MACSU Vice President, Sun Yu Ng, has begun an interesting maximum card video project. He has begun making a series of videos that depict the history of western art and architecture that are illustrated with maximum cards. To date, he has completed five videos that he has uploaded to You Tube. Entitled “Travel via Art & Architecture Maximum Cards”, he ultimately intends to offer a total of 22 videos on this subject.

In his first video, “Prologue” Sun Yu presents 13 slides (over 30 maximum card scans) of early art and architecture that feature cave art from prehistoric Europe, as well as Egyptian, and early Aegean art and architecture.

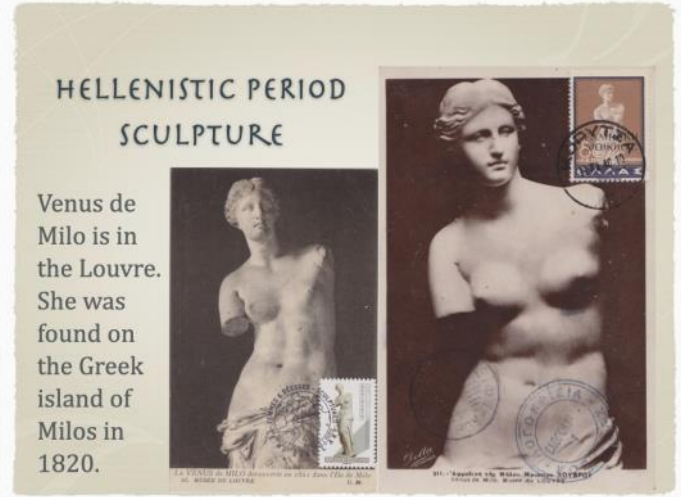


The next two videos feature maximum cards depicting Greek art and architecture.



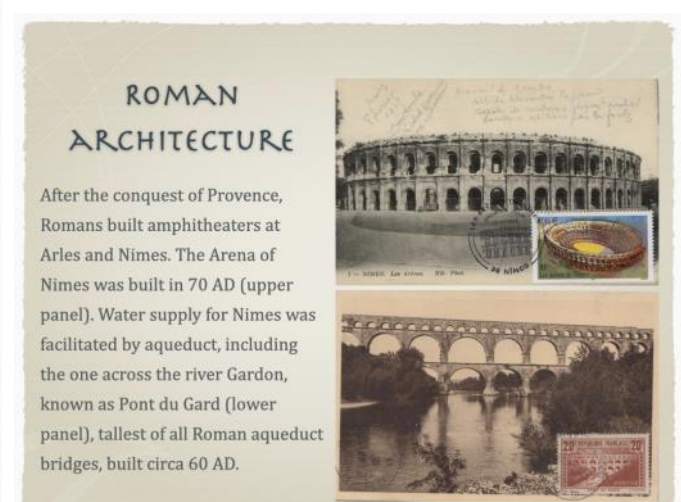
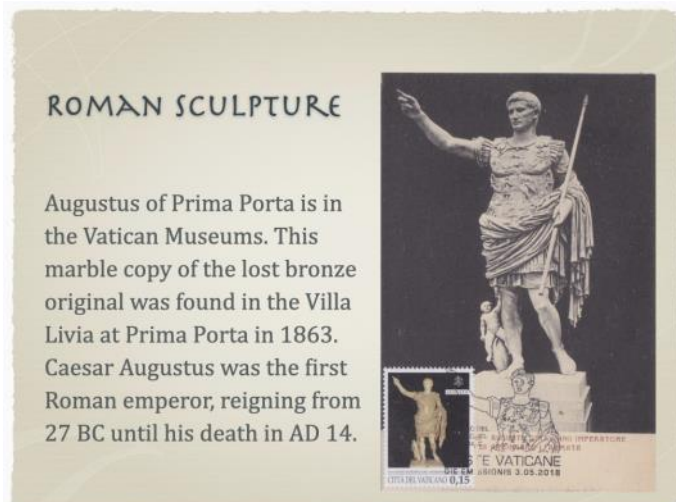
Sun Yu’s second video, “Greek and Roman Origins”, offers over 20 slides of maximum cards that feature ancient Greek temples and sculptures. In this video are maximum cards that depict sculptures from the Late Archaic Greek Period (6th century BC) up until the Early Classical Period. Included are a number of cards that depict sculptures and friezes of the Parthenon and temples found on the Acropolis. There are also other maximum cards of temples from Athens, Delphi, and Corinth.

“Greek Sculpture” is the third video in Sun Yu’s “Travel via Art & Architecture” project. In this 8-minute segment, maximum cards of Greek classical-era statuary are featured, many that are highly recognizable, including Winged Victory, Venus de Milo, the Discobolus, Zeus and Hermes.



Throughout all of the videos, Sun Yu frequently shows two cards of the same subject, often with one using an older stamp and the other using a modern stamp. Sun Yu feels that it is important to use modern stamps in exhibits as it increases the scope of an exhibit and discourages the use of forgeries that can sometimes appear in maximum cards dated before 1940. On the cards that use modern stamps, he uses vintage postcards as he feels this provides increased harmony.

The fourth video, “Roman Sculpture”, features cards of Roman Emperor statuary, Roman mosaics, bridges, gates, amphitheaters, aqueducts, forums, triumphal arches, and Byzantine architecture.



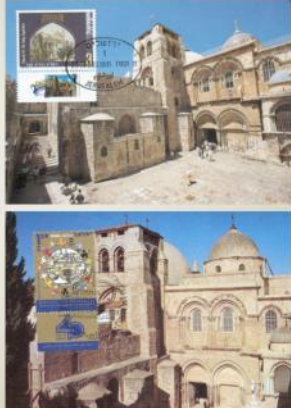
The fifth video takes us into the Romanesque period of art and architecture, with this video concentrating on the religious pilgrimages that were important in medieval society. This 19-minute video focuses on three of the major pilgrimages of the Romanesque era—those to the Holy Land, the Compostela route, and to Rome where many Christian relics were located.

The Holy Land provided pilgrim access to the places where Jesus lived, died, and was resurrected. By the fourth century A.D., pilgrimage had become a recognized expression of Christian piety. Jerusalem’s Holy Sepulchre and the place of the Nativity in Bethlehem were the major places for pilgrimage.

Around 830 AD, the relics of St James were believed to have been found in Spain’s Santiago de Compostela. In the eleventh and twelfth centuries, several different routes from France to Compostela were followed by large numbers of pilgrims. In this video, Sun Yu displays maximum cards of many of the stops at churches, monasteries and monuments along the way to Santiago de Compostela.


**HOLY LAND  
PILGRIMAGE**

Jerusalem harbors many biblical holy sites. Top of the list for most Christian pilgrims will be the Church of the Holy Sepulchre where Jesus was crucified and also where he resurrected from his tomb nearby. The first church on these sites was erected by Emperor Constantine between 326 and 335 AD.



**COMPOSTELA  
PILGRIMAGE**

Tour Saint-Jacques in Paris is one starting point for the ancient Via Turonensis route. This landmark tower is the only remains from a destroyed Gothic church of Saint James erected in the 16th century. Walking distance to Cathedral Basilica de Santiago de Compostela in Spain is about 1560 km or 969 miles.



The sixth video, “Raffaello” (Raphael in English), is an excerpt from what will be a more in-depth chapter of “Travel via Art & Architecture Maximum Cards” on Renaissance art and architecture. Raphael, along with Michelangelo and Leonardo da Vinci are regarded as the three masters of High Renaissance. Maximum cards of many of Raphael’s great works on the walls of the Raphael Rooms in the Vatican Museum are pictured in this seven-minute video.

**RAFFAELLO 1506 AUTORITRATTO**




This Self portrait or *Auto-ritratto* (circa 1506) of Raffaello Sanzio (1483–1520) in the Uffizi has been acknowledged as his self-portrait as a young man, also based on the comparison between this work and the other self-portrait of the painter visible in the fresco depicting the School of Athens in the Room of the Segnatura in the Vatican, commissioned by Pope Julius II and painted between 1509 and 1511.

**RAFFAELLO 1512-3 MADONNA SISTINA**



Sistine Madonna or *Madonna Sistina* is an oil painting on canvas which was commissioned by Pope Julius II for the basilica church of the Benedictine Monastery of San Sisto in Piacenza. It is now at the Gemäldegalerie Alte Meister in Dresden.



Sun Yu's videos are all from 7 to 19 minutes in length. Each video is accompanied by appropriate (dare I say, "concordant") music. Sun Yu states that choosing the soundtrack "turned out to be quite a lot of fun". To him, the music seems to bring out a new dimension for maximaphily. He is open to suggestions from "more musically attuned viewers" to his upcoming videos which will include Gothic, Baroque, Neo-classical, Romanticism, Impressionism, Modern, and more Renaissance material. Sun Yu has also published his "Travel via Art & Architecture Maximum Cards" in Chinese. He is considering publishing his videos in other languages, as well.

These videos highlight many older, classic period maximum cards that are rarely seen. The videos are well worth viewing. To view these interesting and informative videos, go to the You Tube website and search for "Travel via Art & Architecture Maximum Cards" or put [www.youtube.com/@travelviaartarchitecturema9917](http://www.youtube.com/@travelviaartarchitecturema9917) into your browser. Be sure to subscribe to Sun Yu's site so that you will be able to see the next installments of these maximum card videos as he completes them. To whet your appetite for his future projects, below are some slides from some of his upcoming videos.

**ROMANESQUE ART & ARCHITECTURE**

Basilica of San Isidoro in León, Spain is one stop on the Camino de Santiago. As royal monastery with holy relics of Saint Isidore, the crypt was decorated with 12th century painted murals and became a royal burial chapel or Panteón de los Reyes, with eleven Kings of León being buried there.

Romanesque

**GOthic ARCHITECTURE**

In the 12th century, Abbot Suger (c. 1081~1151) rebuilt portions of the abbey church. His great innovation in the new choir was the replacement of the heavy dividing walls in the apse & ambulatory with slender columns supporting a network of pointed arches, rib vaulting and wall buttresses, so that the interior space would be filled with luminous divine light from stained glass windows. Thus he created the first truly Gothic building. After the new basilica was completed in 1144, it would inspire the construction of Gothic cathedrals.

Gothic

**CÉZANNE 1887 SAINTE-VICTOIRE**

Paul Cézanne (1839~1906) began his art career as one of the impressionists but his later works laid the foundations for Cubism (in Chapter X). After his return to his home town Aix-en-Provence, one of his favorite subjects on canvas would be Montagne Sainte-Victoire as depicted in *Mont Sainte-Victoire with Large Pine* [1887] from Pierre Soulé (left panel) and Jacques Thénard (right panel) and *Vallée de l'Arc* [1890] on the next to last slide, respectively.

Impressionism

**KLIMT 1907-8 THE KISS**

The Kiss (left panel) and *Portrait of Adele Bloch-Bauer I* (1903~7) by Gustav Klimt (right panel) are works from his 'Golden Phase', inspired by Byzantine mosaics after his travels to Ravenna and Venice (1888~1889).

Symbolism, Art Nouveau

# Stamp Out War: Support Ukraine!

by Linda Wei-Chun

*This article details the genesis of the Stamp Out War project and the back-stories behind the creation of a unique collection of maximum cards that demonstrates global support for Ukraine.*

On 24 February 2022, Russia invaded Ukraine. To raise public awareness about the seriousness of this matter, I decided to print out some copies of 5×7” postcards featuring the colour scheme of the Ukrainian flag to hand out to whoever wanted to show his/her solidarity with Ukraine.

The postcard was based on a photograph of mine taken in 2009 during my bike tour across Canada. Then freshly arrived in Prince Edward Island after having travelled through the Maritimes, I was in a state of exhaustion when this vast field of yellow flowers spread out in front of me.



No cloud or artificial object came to disturb the landscape. This was a moment of relaxation. I composed this very orderly photo with equal parts shared between the sky and the field to show the harmony between the natural elements. When it was taken in 2009, everything seemed to stand still, motionless, which invites meditation, peace, calm, whereas in 2022, this moment of tranquility contrasts in times of trouble with the madness of war.

Originally, these postcards were the vehicles carrying all sorts of messages and political slogans that the senders wished to convey to the recipients, who might be an acquaintance of the sender or a politician the sender wished to address, like Putin.

Up until then, all these efforts sound like a grassroots Mail Art initiative created out of growing political concerns. However, with my philatelic friends on The Stamp Forum, I started pondering over the possibility of maxicard creation seriously. At the beginning, I was thinking of using peace-themed stamps, yet feared that the visual wouldn't match perfectly. Later, I learned that, in response to Europe's largest refugee crisis since World War II, the official postal agencies of 11 countries have issued special stamps to manifest their support and/or to raise funds for Ukraine. These countries are, in order of stamp release: Latvia (10 March), Estonia (24 March), Poland (25 March), Austria (31 March), Croatia (12 April), Moldova (19 April), Lithuania (6 May), Luxembourg (11 May), Spain (29 May), France (23 June) and Canada (7 July). Each of these stamps incorporates into its design the blue and yellow colours of Ukraine's flag more or less prominently.



I immediately thought about creating philatelically worthy and historically significant maximum cards that can be auctioned to raise funds for Ukraine relief effort. Hence, I started launching a global call. First, I entrusted the Toronto-based print lab Pikto – the same lab who produced all my postcards – to produce my blue/yellow postcards. Second, I acquired these Ukraine support stamps to be paired with my postcards. Third, I mailed these cards to the rest of the world and asked participants to show their solidarity with Ukraine by going to a local post office in their countries on the 24th of August– Ukraine's National Day – to ask for a postmark on these postcards. This way, the visual of the card, the stamp, and the postmark are all related to the same theme – Ukraine.



**Stamp:** Spain: "Spain with Ukraine",  
Scott #4612

**Postmark:** pictorial, Cadiz, Spain, 8/24/2022  
realized with the help of Juan Antonio Casas  
Pajares



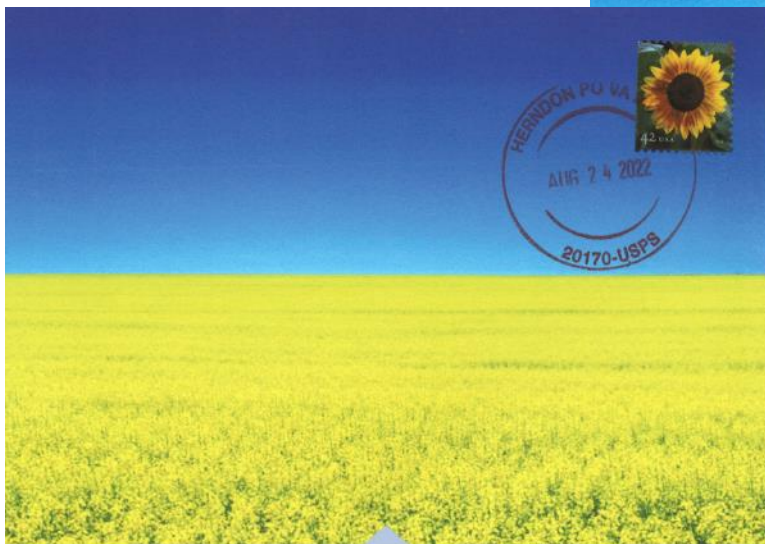
**Stamp:** Estonia: "Glory to Ukraine", Scott #974

**Postmark:** circle-date, Tallinn, Estonia,  
8/24/2022 realized with the help of Simone  
Domenico Casadei Bernardi

As my project was gaining momentum on social media, some of my friends around the world expressed their desire to help, even though their countries didn't issue a special Ukraine support stamp in the blue/yellow colour scheme. That's why I decided to enlarge the scope of this project by acquiring various sunflower / yellow flower stamps that can be fixed on the blue part of the image to pay tribute to Ukraine. Moreover, I set up a personal fundraiser on Indiegogo for people to contribute financially.

**Stamp:** Canada: "Help for Ukraine", semi-  
postal, Scott #B32

**Postmark:** circle-date, Vegreville, Alberta,  
8/24/2022, realized by Linda Wei-Chun

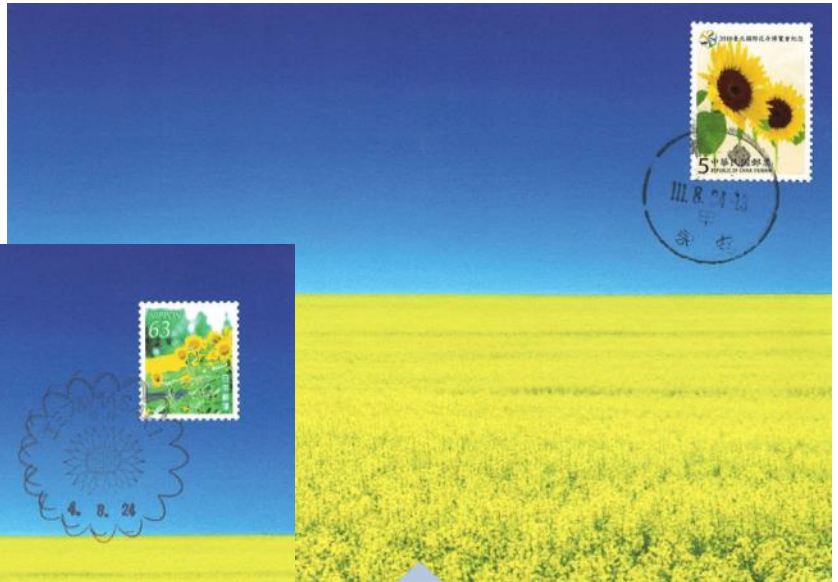


**Stamp:** USA, Sunflower, Scott #4347

**Postmark:** circle-date, Herndon, VA 8/24/2022  
realized by Dorin Cojocariu

**Stamp:** Taiwan: “Sunflower” for the 2010 Taipei International Flora Expo , Michel #TW3548

**Postmark:** circle-date, Taoyuan, 8/24/2022  
Realized with the help of Harry Lee



**Stamp:** Japan: Summer Greetings, “Sunflowers”, Yvert #JP11012

**Postmark:** pictorial, circle-date, Masaki, 8/24/2022, realized with the help of Ai Suzuki

As this project was mobilizing public opinion in support of peace and unity in Ukraine and beyond, I was overwhelmed by the outpouring of interest from people around the world. From Australia to Austria, from Canada to Croatia, from Japan to Spain, and beyond – people from 25 countries have participated in my project, each adding their country’s stamp and postmark to this collection of maxicards that is not only a testament to the power of philately to unite different individuals across borders and cultures, but also a practical demonstration of the impact that can be achieved through collaboration. In times of conflict and division, it is heartening to see the power of philately to bring people together in support of a common cause.

Nevertheless, the road to the creation of a unique and visually stunning collection of maxicards that embody the theme of global solidarity is not short of pitfalls. I must admit that recruiting participants was the toughest part of the project. While it’s true that being a quadrilingual allows me to communicate airily with a large number of world inhabitants, lack of knowledge and general interest in philately / maximaphily / deltiology / marcophily also makes the task of convincing non-collectors the worth of this project tedious. Also, given the small population of some countries whose participation I counted on, it was difficult to find the right person willing to pay a visit to a post office on a summer day. I don’t recall how many private messages I sent out were unread, or how many times I felt so dejected that I asked Dorin to connect me with his acquaintances/friends living in particular countries. The result my global team and I have achieved was impossible without the valuable help of many Postcrossing forum members. My heartfelt gratitude to all of those who have contributed to this project.

*Stamp Out War* project is now entering the auction phase. For more information, please visit <https://deldal9.wixsite.com/stampoutwar>.

## Connecticut Through Maximum Cards

In our sixth installment of viewing each of the 50 states within the United States of America through maximum cards, Connecticut comes up next. Connecticut was admitted to the Union on January 9, 1788, the fifth state to ratify the U.S. Constitution. Connecticut is located in the northeastern part of the United States, and is considered the southern-most state in the region of New England. The state is named for the Connecticut River that runs through the state. The word "Connecticut" comes from the anglicized spelling of a Mohegan-Pequot word for "long tidal river".

Initially settled by the Dutch, by the 1630s the English had established major settlements in the area. The majority of these settlers were Puritans who came in 1636. Today, Connecticut has a population of over 3.6 million people, making it the 29th most populous state. However, it is the fourth most densely populated of the US states. It is the third smallest state in area (5,018 square miles).



The Connecticut flag contains a white baroque shield with three grapevines, each bearing three bunches of purple grapes on a field of royal blue. The banner below the shield reads "Qui Translulit Sustinet", Latin for "He who transplanted sustains". It is the Connecticut's state motto.

**Stamp:** Connecticut State Flag, Scott #3567

**Postcard:** CT state flag, published by Zazzle

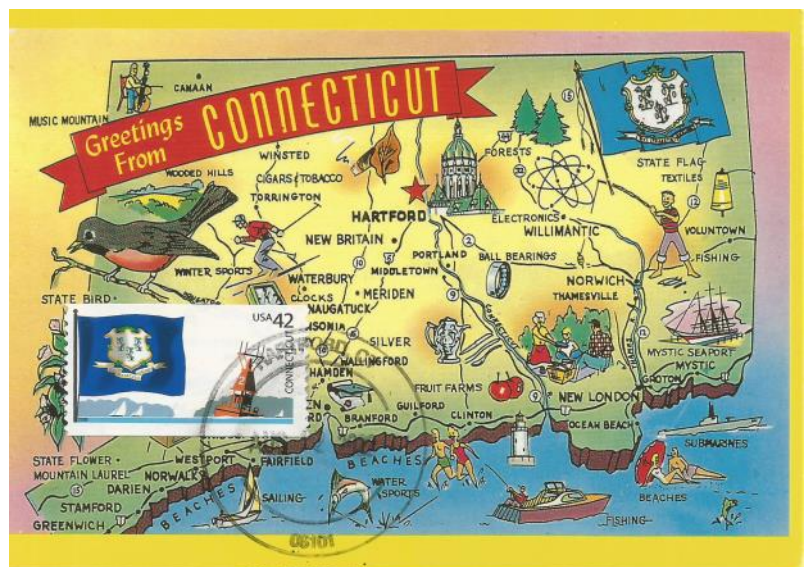
**Postmark:** circle-date, Hartford, CT  
9/15/2008

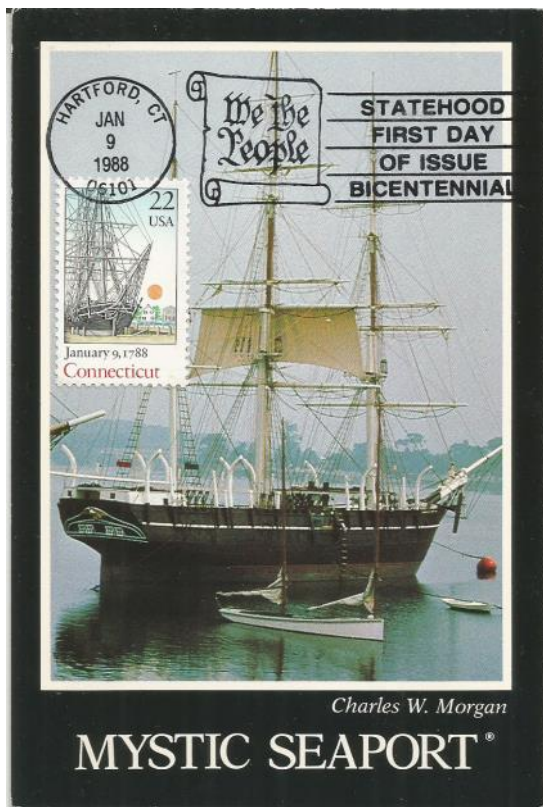
A map of Connecticut shows an extensive coastline of over 300 miles that hug the shore of Long Island Sound and the Atlantic Ocean. It is no surprise that its history is intimately tied to the sea. Connecticut has another 300 miles of navigable rivers.

**Stamp:** Connecticut Flag, Scott #3567

**Postcard:** CT map, "Greetings from Connecticut", unknown publisher

**Postmark:** ordinary circle-date, Hartford, CT  
8/12/2022





From the colonial era, Connecticut developed a maritime tradition. Prior to 1776, Connecticut shipyards had already built 100 ships, including brigs, schooners and sloops. This maritime tradition can be viewed today at the Mystic Seaport Museum in Mystic, CT. It is the largest maritime museum in the United States. In its collection of ships are two vessels that have been featured on US Postal Service stamps: the “Charles W Morgan” and the “Joseph Conrad”. The “Charles W Morgan” is a whaling ship that was featured on the Connecticut Bicentennial Statehood stamp and on one of the 1971 Historic Preservation issues.

**Stamp:** Connecticut Statehood Bicentennial, Scott #2340

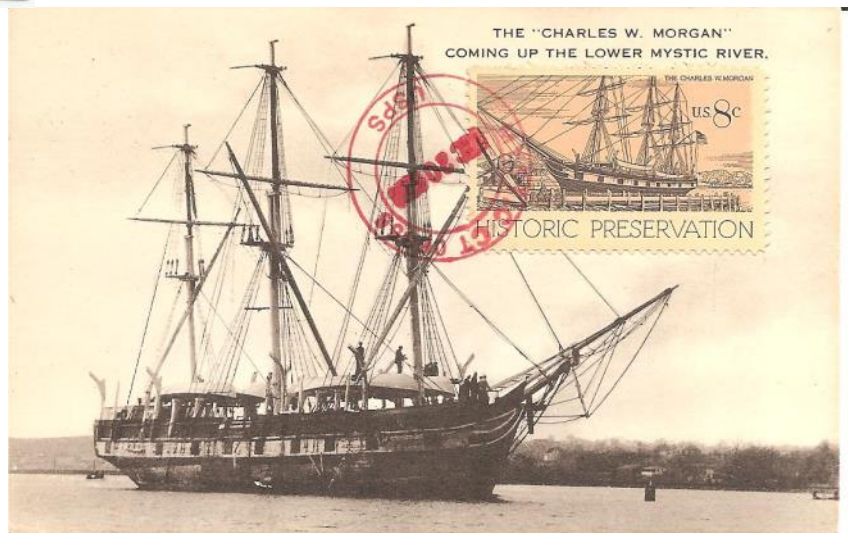
**Postcard:** Charles W Morgan, Mystic Seaport, published by

**Postmark:** pictorial “We the People” FDOI, Hartford, CT (nonconcordant)

**Stamp:** (right) Charles W Morgan, Historic Preservation issue of 1988, Scott #2340

**Postcard:** Charles W Morgan, Mystic Seaport, published by Artvue

**Postmark:** ordinary circle-date, Mystic, CT 12/20, 2018



The two “Greetings from Connecticut” stamps from the 2002 “Greetings from America” issues featured the “Joseph Conrad”. The “Joseph Conrad” was built in 1882 and initially served as a Danish training ship.

**Stamp:** Greetings from Connecticut, Scott #3702

**Postcard:** Joseph Conrad, Mystic Seaport, published by New London News Co.

**Postmark:** pictorial “350th Anniversary Station”, Mystic, CT 10/1/2004



The maritime tradition remains alive in Connecticut with continued shipbuilding, fishing, marine transport, naval support and leisure boating still prominent in the state today.

The United States Coast Guard Academy is located in New London, CT. USCGA cadets can receive training on the “Eagle”, a 295-foot, three-masted bark. Its main mast is 147 feet tall. Known as “America’s Tall Ship,” the majestic Eagle is the United State’s largest tall ship. and the only active square-rigger in U.S. government service. The vessel was featured on the 2015 stamp honoring the U.S. Coast Guard for its role in protecting the security of the nation and advancing its vital maritime interests.

To aid in the navigation of the Connecticut coast, a light station was built on the west side New London Harbor entrance in 1760. The current lighthouse at this location was erected in 1801, making it the seventh oldest lighthouse in the US. At a height of 90 feet (27 meters), it is the tallest lighthouse in Connecticut and on Long Island Sound. Its fourth order Fresnel lens is visible for 17 nautical miles (31 km; 20 mi). The lighthouse is listed on the National Register of Historic Places.



**Stamp:** US Coast Guard, Scott #5008, featuring the “Eagle” and a MH-65 Dolphin helicopter, the standard rescue aircraft of the Coast Guard

**Postcard:** U.S. Coast Guard Bark “Eagle”, published by John F. Urwiller

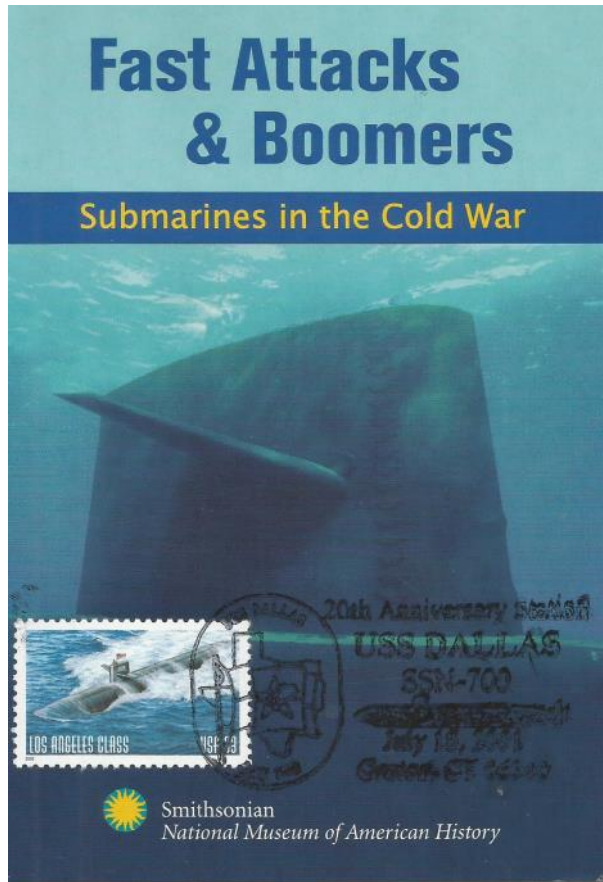
**Postmark:** pictorial (the Eagle), “75th Anniversary Commissioning

**Stamp:** New London Harbor Lighthouse from the 2013m Mid-Atlantic Lighthouses issue, Scott #4795

**Postcard:** New London Harbor Lighthouse, published by Clifford Scofield Color Productions

**Postmark:** pictorial (Custom House Maritime Museum), “212 Anniversary Station, New London Harbor Lighthouse”, New London, CT 7/13/2013





**Stamp:** Los Angeles Class Submarine, Scott #3374

**Postcard:** "Fast Attacks & Boomers, Submarine in the Cold War:", published by Hotstamp for the Smithsonian National Museum of American History

**Postmark:** pictorial "20th Anniversary USS Dallas", Groton, CT 7/18/2011

Sixty-two (62) Los Angeles Class nuclear-powered fast attack submarines were built between 1972 and 1996. As of 2022, 26 Los Angeles Class subs remain in commission, representing over half of the US Navy's current fast attack submarines.

The Ohio class of nuclear-powered submarines includes the Navy's 14 ballistic missile submarines (SSBNs). These 14 submarines together carry about half of U.S. active strategic thermonuclear warheads. The Ohio Class submarines were built between 1976 and 1997.

The United States Navy's primary east coast submarine base is located in Groton, CT, directly across the Thames River from New London. The Naval Submarine Base New London became the country's first submarine base in 1915. The base expanded during World War I and in World War II, it further expanded in size and personnel. Today, the New London Base is homeport to 16 attack submarines. The major submarine construction yard of General Dynamics' Electric Boat Division is located near the base.

Also located in Groton, is the Submarine Force Library and Museum. This free museum maintains the world's finest collection of submarine artifacts. Its premiere exhibit is the USS Nautilus, the first nuclear powered submarine.

**Stamp:** Ohio Class Submarine, Scott #3375

**Postcard:** "Silent But Deadly", USS Michigan, an Ohio Class missile launching submarine.

**Postmark:** pictorial USS Ohio Anniversary Station, 11/11/2011



Connecticut's official state bird is the American Robin (*Turdus migratorius*). The robin is a migratory bird with a wide distribution within the U.S. and is thought to be the most abundant bird in North America.

**Stamp:** American Robin, CT State Bird, Scott #1959

**Postcard:** Robin, Connecticut State Bird, published by Capital Engravings

**Postmark:** circle-date, Hartford, CT 8/12/2022



Several paintings by American artists that were born in Connecticut have been featured on USPS stamps. Frederic Edwin Church was born in Hartford, CT in 1826. His "Niagara" painting was featured in the 1998 "Four Centuries of American Art" issue.

**Stamp:** "Niagara", by Frederick Edwin Church, Scott #3236n

**Postcard:** "Niagara", published in Italy

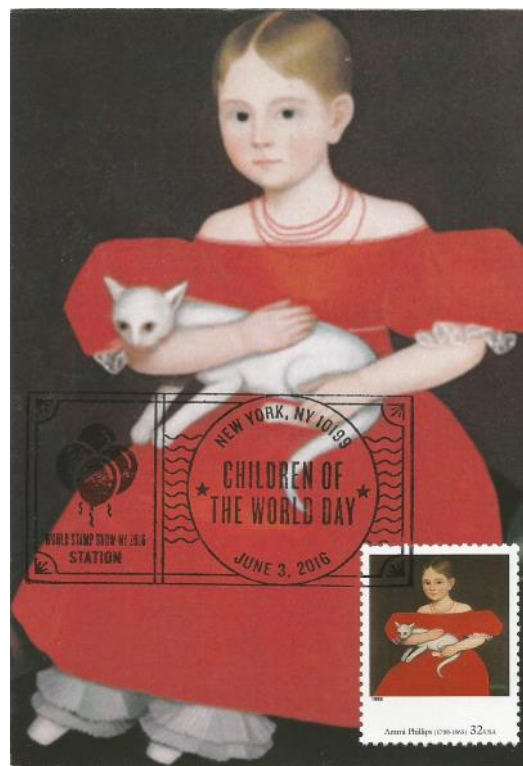
**Postmark:** circle-date, Niagara Falls, NY 9/8/2015

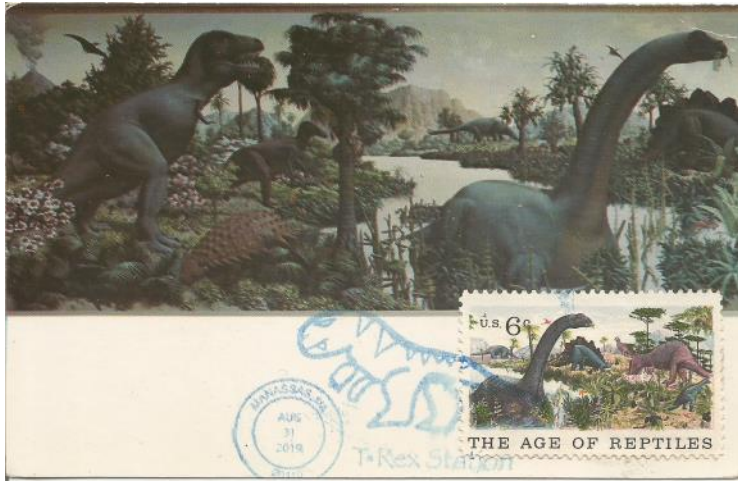
Ammi Phillips is another Connecticut born artist whose "Girl with Red Dress with White Cat and Dog" painting was featured on a stamp in the "Four Centuries of American Art" issue. This work was painted in the mid-1830s and today, is housed in the collection of the American Folk Art Museum in New York. It was purchased for the museum for the price of one million dollars. Phillips was born in Colebrook, Connecticut in 1788.

**Stamp:** "Girl in Red Dress with white Cat and Dog" by Ammi Phillips, Scott #3236c

**Postcard:** "Girl in Red Dress with white Cat and Dog", published in Italy

**Postmark:** pictorial, "World Stamp Show 2015 Station, Children of the World Day", New York, NY 6/3/2016





Yale University's Peabody Museum, located in New Haven CT, houses the most famous painting of dinosaurs, "The Age of Reptiles". Painted by Rudolph Zallinger, this mural is 110 feet long and was completed in 1947.

**Stamp:** "Age of Reptiles" from the 1969 Natural History issue, Scott #1390

**Postcard:** "Age of Reptiles", published by Joseph F Morsello

**Postmark:** pictorial, "T-Rex Station", Manassas, VA 8/31/2019

A number of historical figures connected to Connecticut in American history have found themselves on USPS postage stamps.

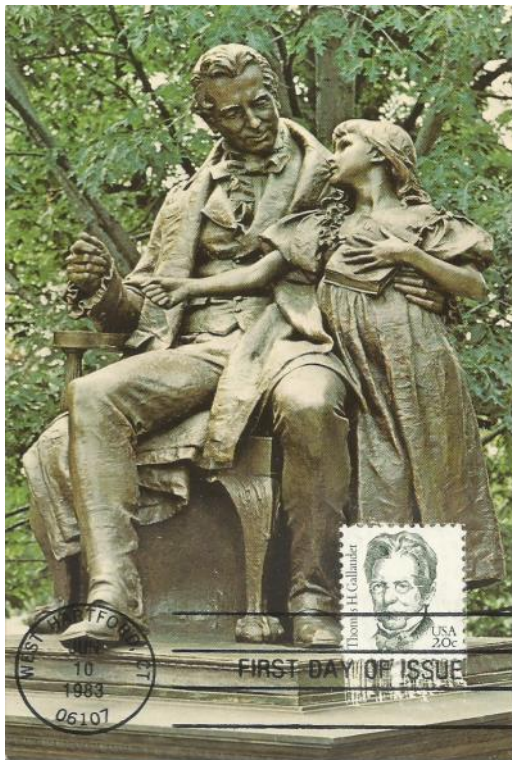
In 1777, during the Revolutionary War, the British marched on Danbury, Connecticut with the aim of destroying a Continental Army supply depot. On April 26th, a 16 year old girl named Sybil Ludington made an all-night ride to alert the militia of the British advance into the area. Modern scholars have cast some doubt as to the accuracy of the Revolutionary War "heroine".



**Stamp:** Sybil Ludington, from the "Contributors to the Cause" issue, Scott #1559

**Postcard:** Sybil Ludington statue in Putnam County, NY, published by Pendor Natural Color

**Postmark:** FDOI, Carmel, NY 3/25/1975



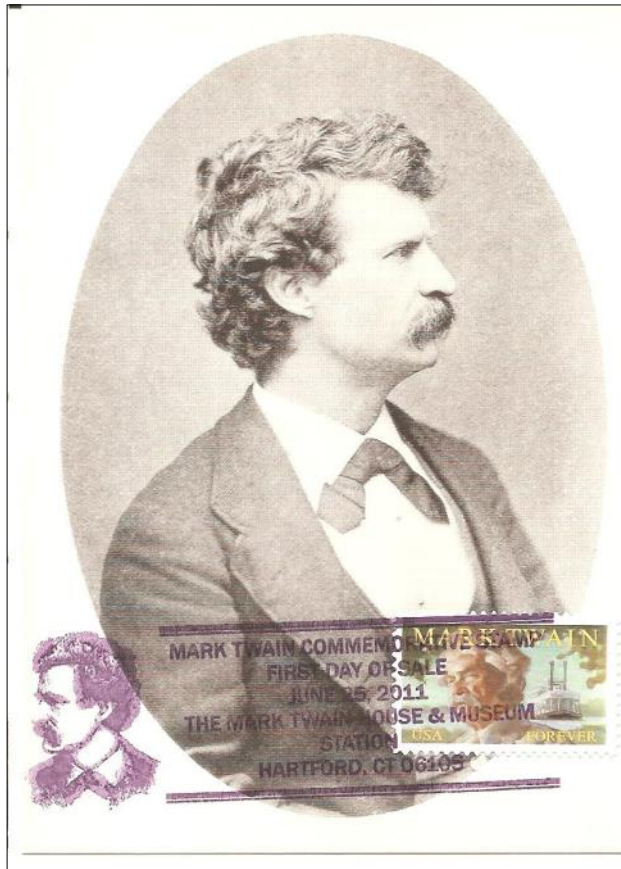
Thomas H. Gallaudet was an educator who co-founded the first permanent school for the deaf in America. What would come to be known as the American School for the Deaf was founded in 1817 and located in West Hartford, CT. He was the school's first principal, serving until 1830.

**Stamp:** Thomas H. Gallaudet from the Great Americans definitive series Scott #1861

**Postcard:** Thomas H. Gallaudet statue at Gallaudet College, Washington, DC, published by L. B. Prince Company

**Postmark:** FDOI, West Hartford, CT 6/10/1983





In 1873, Mark Twain (Samuel Clemens) moved his family to Hartford, CT. He would write many of his classic works here in the next 17 years. Interestingly enough, he moved next door to another famous literary figure from Connecticut, Elizabeth Beecher Stowe.

**Stamp:** Mark Twain, Scott #4545

**Postcard:** Mark Twain, 1880, published by the Mark Twain House

**Postmark:** pictorial, unofficial FDOI, "The Mark Twain House & Museum Station", Hartford, CT 6/25/2011



**Stamp:** Kathryn Hepburn, Scott #4461

**Postcard:** Kathryn Hepburn, published Editions Admira

**Postmark:** pictorial FDOI, Old Saybrook, CT 5/12/2010

Academy Award winning Kathryn Hepburn was born in Connecticut. She had a 60-year career in film, theater, and television

Marian Anderson was an influential opera singer who was born in Connecticut in 1902.

**Stamp:** Marian Anderson, Scott #3896

**Postcard:** Marian Anderson, published by Pomegranate

**Postmark:** pictorial FDOI, Washington, DC 1/27/2005



## Delaware Through Maximum Cards

The mid-Atlantic state of Delaware is located on the Chesapeake Peninsula. Delaware derived its name from the first governor of colonial Virginia, Thomas West, 3rd Baron De La Warr. Prior to the arrival of Europeans, the area was occupied by the Native American tribes of the Lenape and the Nanticoke. Dutch traders initially colonized the region in 1631, settling in the area that is today the town of Lewes. However, the Dutch settlers were all killed within a year in a dispute with local tribes. The Swedes arrived in 1638, but by 1655, New Sweden fell to the Dutch, who in turn, were conquered by a British fleet in 1664. By 1682, the area was under the ownership of William Penn.

The colony of Delaware relied on indentured servants and later slaves, as it cultivated tobacco as a cash crop.

**Stamp:** Delaware Statehood, Scott #2336

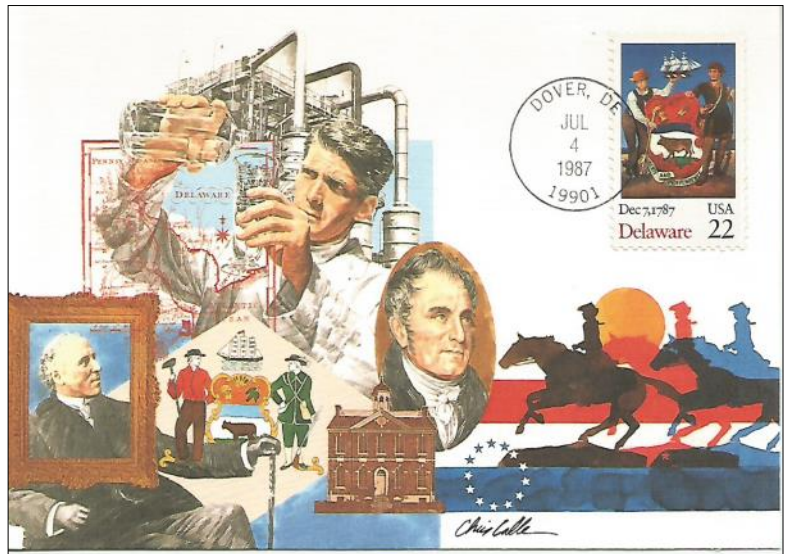
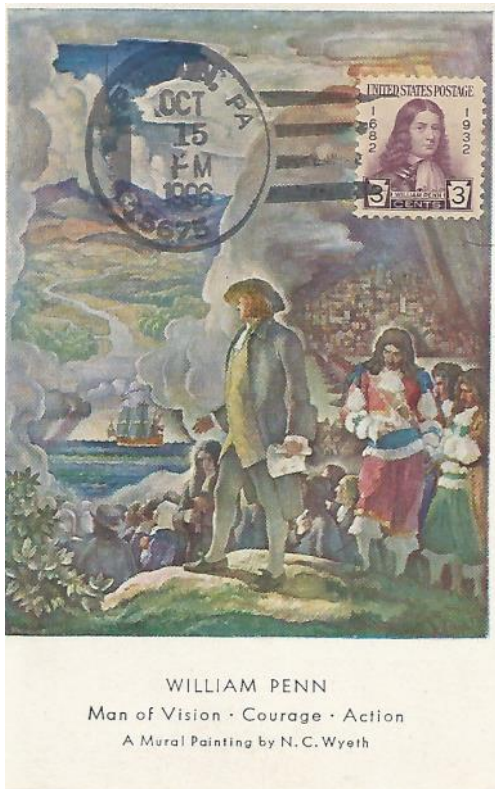
**Postcard:** Delaware, an official maximum card of the Commission on the Bicentennial of the United States Constitution published by Unicover Corp. No 87-73

**Postmark:** FDOI, Dover, DE 7/4/1987

**Stamp:** William Penn, Scott #724

**Postcard:** mural painting of William Penn, unknown publisher

**Postmark:** ordinary four-bar date,, Penn, PA 10/15/1996

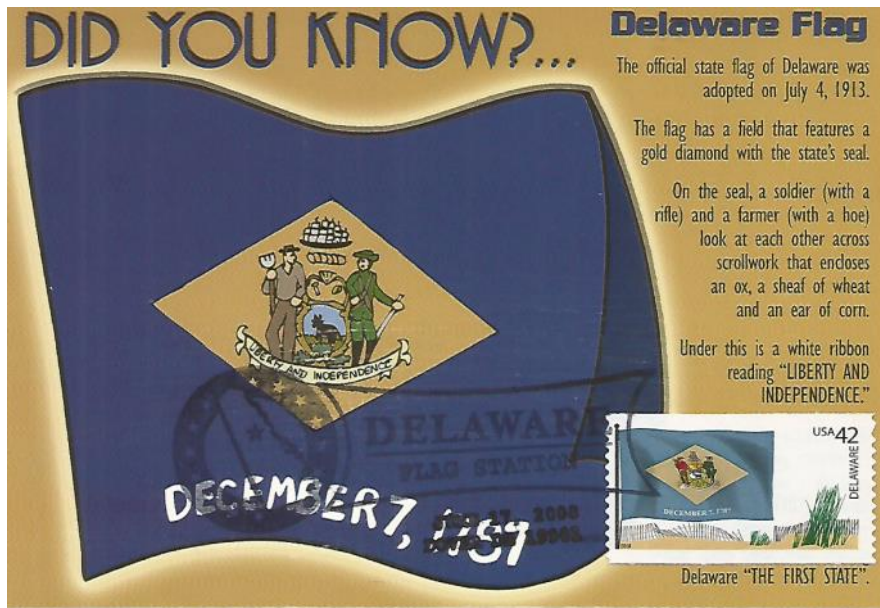


After the Revolutionary War, on December 7, 1787, Delaware was the first state to ratify the U S Constitution. This act has earned Delaware the nickname of “the First State”.

In the late 19th century, manufacturing expanded in Delaware, with the DuPont chemical company greatly influencing the direction and growth of the state.

From the early 20th century, Delaware has become an onshore corporate haven. Due to its corporate laws, the state is the domicile of over half of all New York Stock Exchange-listed business and over three-fifths of the Fortune 500.

While Delaware is the second smallest state in size (2,489 square miles), it is the sixth most densely populated state with a population just over one million. Wilmington is its largest city, while Dover is its capital city.



**Stamp:** Delaware State Flag from the Flags of Our Nation series, Scott #4282

**Postcard:** Delaware State Flag, "Did You Know", published by Marketplace Merchandising

**Postmark:** pictorial Delaware Flag Station, Dover, DE 7/17/2008

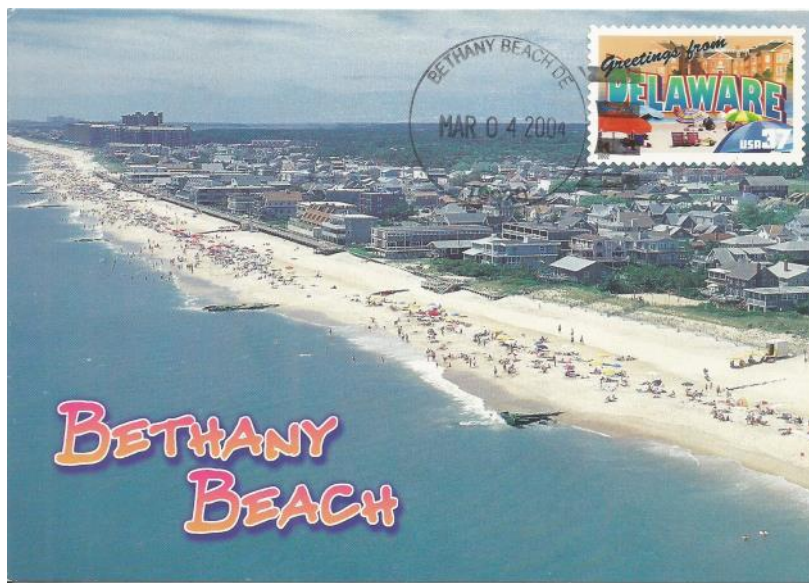
**Stamp:** Blue Hen Chicken, Delaware State Bird, Scott #1960

**Postcard:** Delaware State Bird, Published by Capital Engravings

**Postmark:** pictorial Dover Stamp Club Station. Dover, DE 10/18/2008

The state bird of Delaware is the Blue Hen Chicken, or the Delaware Blue Hen. While this bird is not a recognized chicken breed, it is a strain of the American Gamecock. The bird is the mascot of the University of Delaware's sports teams.

The Delaware beaches are located on the Atlantic Ocean, primarily in the southern portion of the state. The beaches are popular tourist destinations, with many amenities that include tax-free shopping, fishing, restaurants, nightlife, boardwalk, etc. The primary beaches are Rehoboth Beach, Cape Henlopen State Park, and Bethany Beach.



**Stamp:** Greetings from Delaware featuring a beach scene (37 cent variety), Scott #3703

**Postcard:** Bethany Beach, published by Marketplace Publishing

**Postmark:** ordinary, four-bar killer, circle-date, Bethany Beach, DE 3/4/2004

## Travel and Maximum Cards

Returning to our cruise ship after a day of touring the beautiful Colonial sites of Cartagena, Columbia, I was able to realize a great looking Macaw maximum card. At the Cartagena Cruise Port there is a small aviary that contains 50 or more Macaws. We rested in the shade, took pictures and interacted with these beautiful birds.

Around the corner of the aviary was a gift shop and low and behold, there was a small “post office” inside the shop. I asked the clerk to look at the stamps that were available and low and behold, they had macaw stamps. Three feet to the side of the “post office” there was a postcard rack and low and behold, there were macaw postcards. .



Selfie with the Cartagena Macaws



I bought 10 stamps and 10 cards, affixed the stamps to the cards and low and behold, they offered a pictorial Cartagena cruise port postmark!

Unlike most postal clerks, this clerk did not question why I wanted stamps on the picture side of postcards. She let me apply the postmark and commented that these cards were an interesting way to collect stamps.

While I was standing around, drying the ink, a young French gentleman purchased stamps for his collection. In my continuing attempt to introduce people to maximaphily, I gave him one of my realizations. Several other shoppers came by and wanted to look at my new maximum cards. I believe that maximum cards “sell” themselves when they are seen by people.

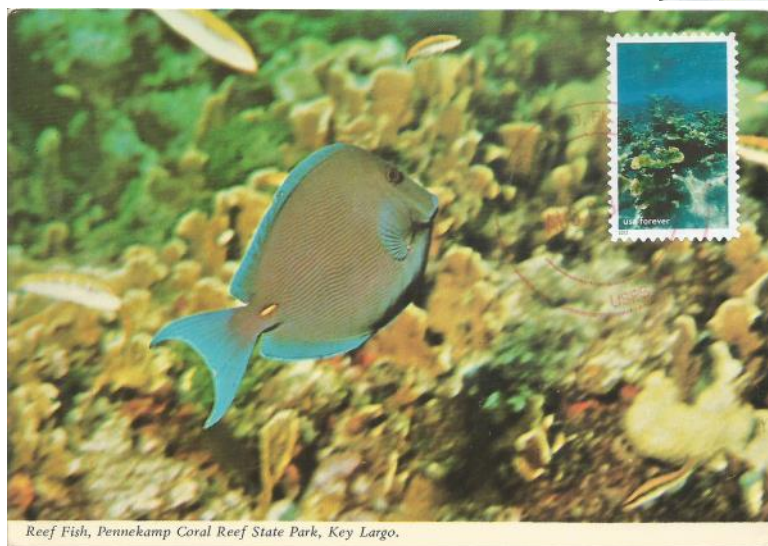
## Recent Realizations—National Marine Sanctuaries

On August 5, 2022, the United States Postal Service issued a pane of 16 different stamps highlighting the 50 years of National Marine Sanctuaries. The first day of issue site was Santa Rosa, California. These 16 stamps featured a variety of sea mammals, fish, reef scenes and coastal areas.

**Stamp:** Red-footed Booby photographed by Mark Sullivan in The Papahānaumokuākea Marine National Monument, Scott #5713b

**Postcard:** Red-footed Booby, published by Zazzle

**Postmark:** circle-date, Hanalei, HI 8/11/2022



**Stamp:** Elkhorn Coral photographed by Norbert Wu in Florida Keys National Marine Sanctuary, Scott #5713g

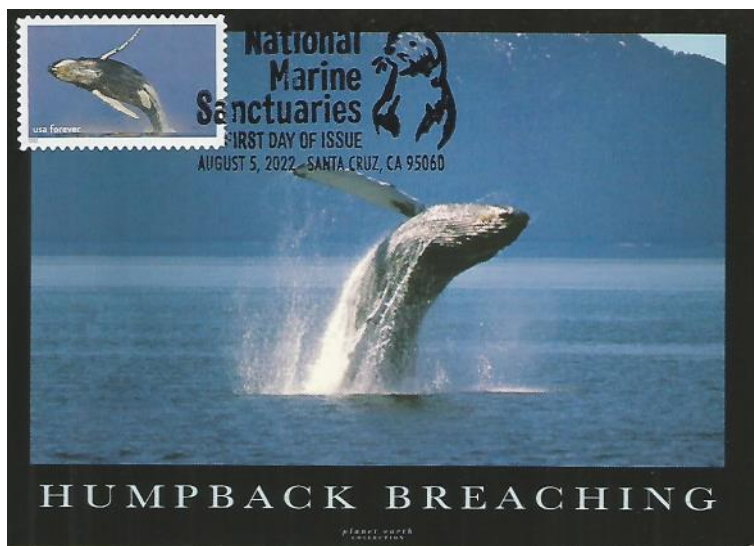
**Postcard:** Reef Fish, Pennkamp Coral Reef State Park, published by Murphy Brothers Press

**Postmark:** circle-date, Key Largo, FL 8/3/2022

**Stamp:** Humpback Whale breaching photographed by Elliott Hazen in Stellwagen Bank National Marine Sanctuary, Scott #5713c

**Postcard:** Humpback Breaching, published by Pyramid

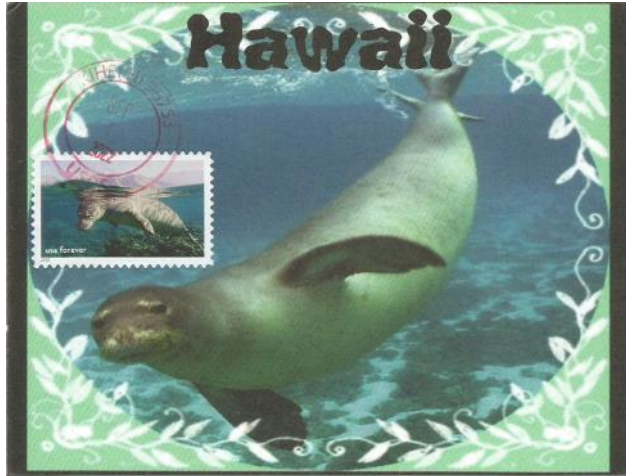
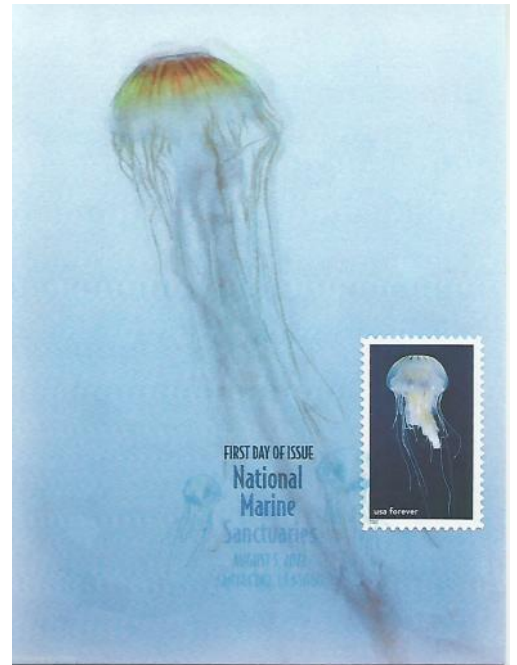
**Postmark:** official pictorial FDOI, Santa Cruz, CA 8/5/2022



**Stamp:** Atlantic Sea Nettle photographed by Michael Durham, can be found in Gray's Reef National Marine Sanctuary. Scott #5713l

**Postcard:** Jellyfish, published by Zazzle

**Postmark:** digital color FDOI, Santa Cruz, CA 8/3/2022



**Stamp:** Hawaiian Monk Seal photographed by Ed Lyman in Hawaiian Islands Humpback Whale National Marine Sanctuary by Scott #5713h

**Postcard:** Hawaiian Monk Seal, published by Zazzle

**Postmark:** circle-date, Kihei, HI 9/1/2022

**Stamp:** Sea Stacks photographed by Matt McIntosh in Olympic Coast National Marine Sanctuary, Scott #5713d

**Postcard:** published by Zazzle

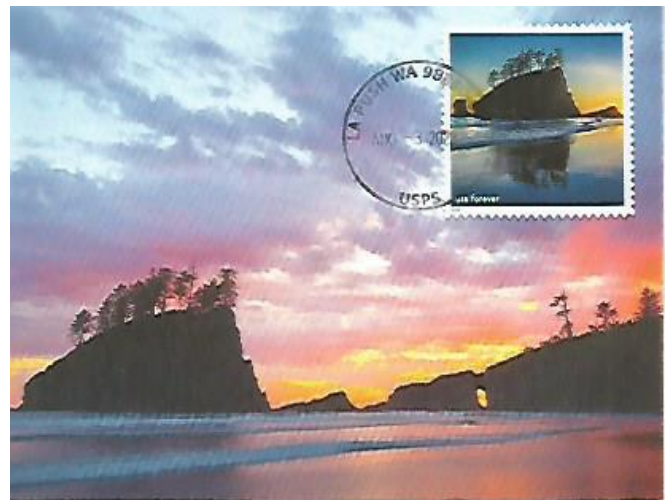
**Postmark:** circle-date, La Push, WA 8/3/2022



**Stamp:** Sea Otter photographed by Norbert Wu in Monterey Bay National Marine Sanctuary. Scott #5713j

**Postcard:** Sea Otter

**Postmark:** pictorial FDOI, Santa Cruz, CA 8/5/2022

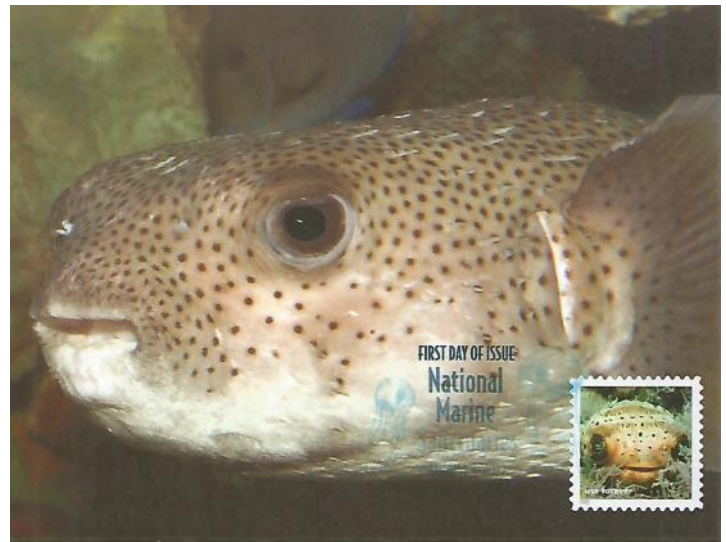


Realized by Ying Huang

**Stamp:** Balloon Fish photographed by Daryl Duda in Florida Keys National National Marine Sanctuary, Scott #5713b

**Postcard:** Balloon Fish, published by Zazzle

**Postmark:** official digital color FDOI, Santa Cruz, CA 8/5/2022



**Stamp:** Queen Angel Fish photographed by G. P. Schmahl in Flower Garden Banks National Marine Sanctuary, Scott #5713i

**Postcard:** Queen Angel Fish, unknown Publisher, photo by Barbara Shively

**Postmark:** circle-date, 8/3/2022 (pre FDOI)

**Concordance:** Flower Garden Banks National Marine Sanctuary's administrative offices are in Galveston, TX

**Stamp:** photograph by Wendy Cover in the National Marine Sanctuary of American Samoa, Scott #5713o

**Postcard:** reef at Anastasia State Park, published by Lantern Press

**Postmark:** circle-date, Anastasia Island, FL 8/30/2022



**Stamp:** Sand Tiger Shark photographed by Greg McFall in Monitor National Marine Sanctuary Scott #5713n

**Postcard:** Sand Tiger Shark, Sea World  
Postcard published by Impact

**Postmark:** pictorial FDOI, Santa Cruz, CA 8/5/2022

Sand Tiger Sharks are found throughout the world's temperate oceans. They can grow to 10.5 feet in length and weigh 250 pounds. Sand Tiger Sharks are one of the most common sharks in aquariums.



**Stamp:** Sea Lions photographed by Jeff Harris in Channel Islands National Marine Sanctuary, Scott #5713m

**Postcard:** California Sea Lions,

**Postmark:** circle-date FDOI, Santa Cruz, CA 8/5/2022

Realized by Ying Huang

**Stamp:** Ice on Shoreline of Thunder Bay National Sanctuary. Photographed by Kate Thompson, Scott #5713p

**Postcard:** Dashing Waves, published by Avery Color Studios

**Postmark:** circle-date FDOI, Santa Cruz, CA 8/5/2022

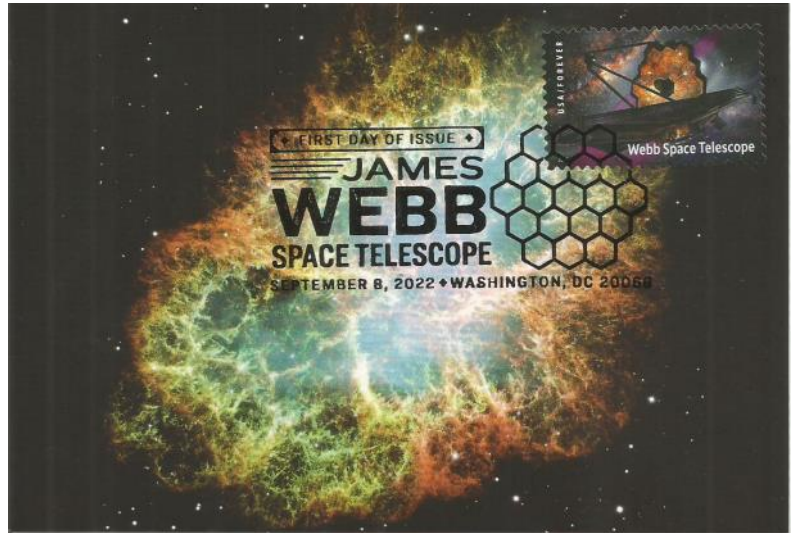




## New Realizations—Webb Space Telescope

On Christmas Day, 2021, NASA launched the new James Webb Space Telescope. With its ability to see very faint infrared light, this telescope will completely transform our understanding of the cosmos.

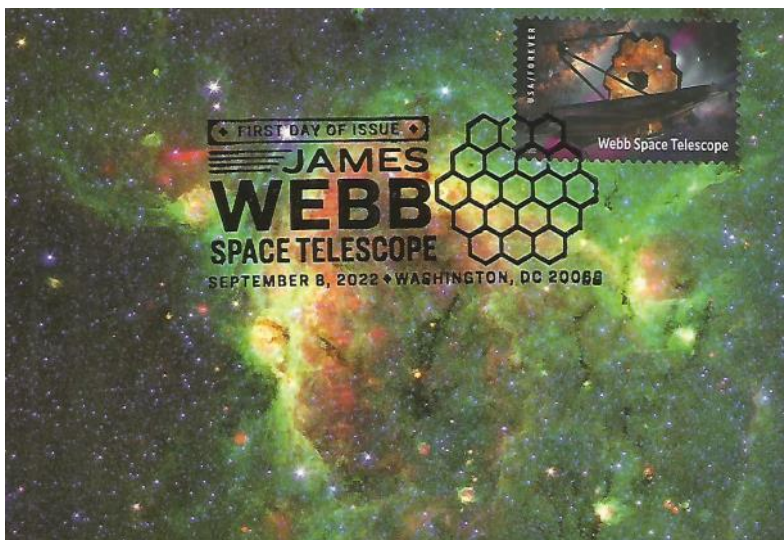
The Webb Telescope will enable investigations across many fields of astronomy. It will allow astronomers to look back into time to observe the formation of the first galaxies and stars. Dozens of distant galaxies have already been spotted as they were just 550 million years or less after the Big Bang. So far, the furthest seen in the Webb Telescope's short life is a galaxy that is estimated to be 13 billion light years from earth.



**Stamp** (above): James Webb Space Telescope, Scott #5720

**Postcard:** Crab Nebula, published by Chronicle Books

**Postmark:** pictorial FDOI, Washington, DC 9/8/2022



**Stamp** (above): James Webb Space Telescope, Scott #5720

**Postcard:** Hierarchical Bubble Structure, published by Chronicle Books

**Postmark:** pictorial FDOI, Washington, DC 9/8/2022

**Stamp** (right): James Webb Space Telescope, Scott #5720

**Postcard:** R136 in the Tarantula Nebula, published by Chronicle Books

**Postmark:** circle-date FDOI, Washington, DC 9/8/2022



## Recent Realizations by Ying Huang

Ying Huang was busy with realizations in the second half of 2022. Here is some of his work with comments by him, and my response.



Fig. 1

**Stamp:** Buzz Lightyear, Scott #5710

**Postcard:** Buzz Lightyear, published by Small Planet Co.

**Postmark:** Digital color FDOI, Los Angeles, CA 8/3/2022



Fig. 2

**Stamp:** Buzz Lightyear, Scott #5712

**Postcard:** Buzz Lightyear, published by Small Planet Co.

**Postmark:** Digital color FDOI, Los Angeles, CA 8/3/2022



Fig. 3

**Stamp:** Buzz Lightyear, Scott #5711    **Postcard:** Buzz Lightyear, published by Small Planet Co.

**Postmark:** Digital color FDOI, Los Angeles, CA 8/3/2022

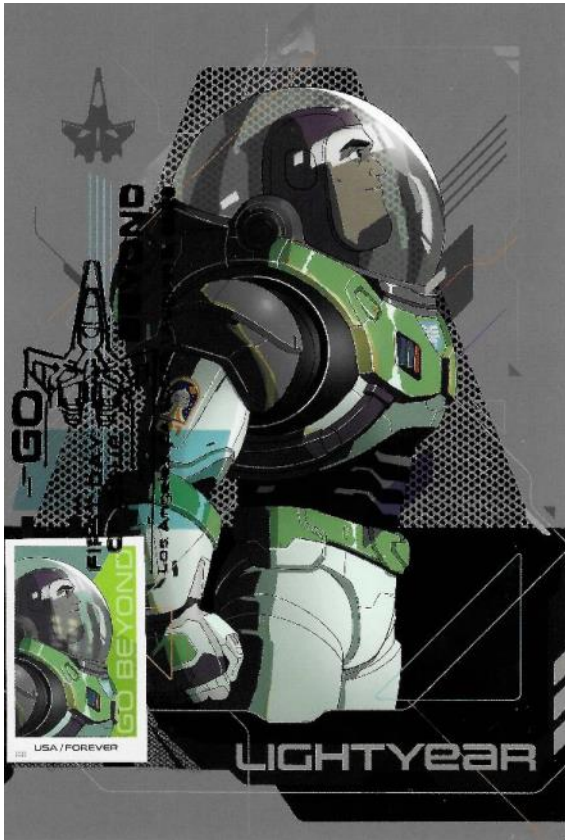


Fig. 4  
**Stamp:** Buzz Lightyear, Scott #5709  
**Postcard:** Buzz Lightyear, published by Small Planet Co.  
**Postmark:** pictorial FDOI, Los Angeles, CA

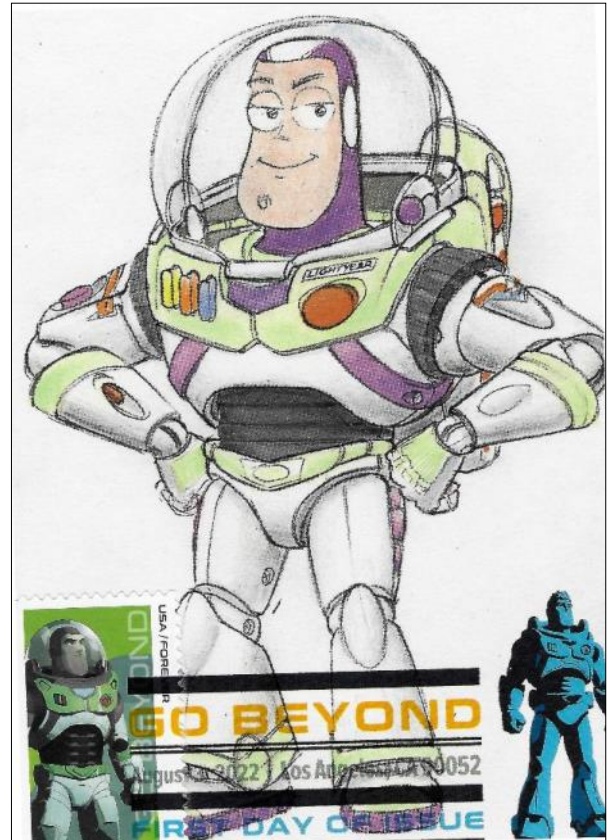


Fig.5  
**Stamp:** Buzz Lightyear, Scott #5712  
**Postcard:** Buzz Lightyear, published by Chronicle Books  
**Postmark:** Digital color FDOI, Los Angeles, CA 8/3/2022

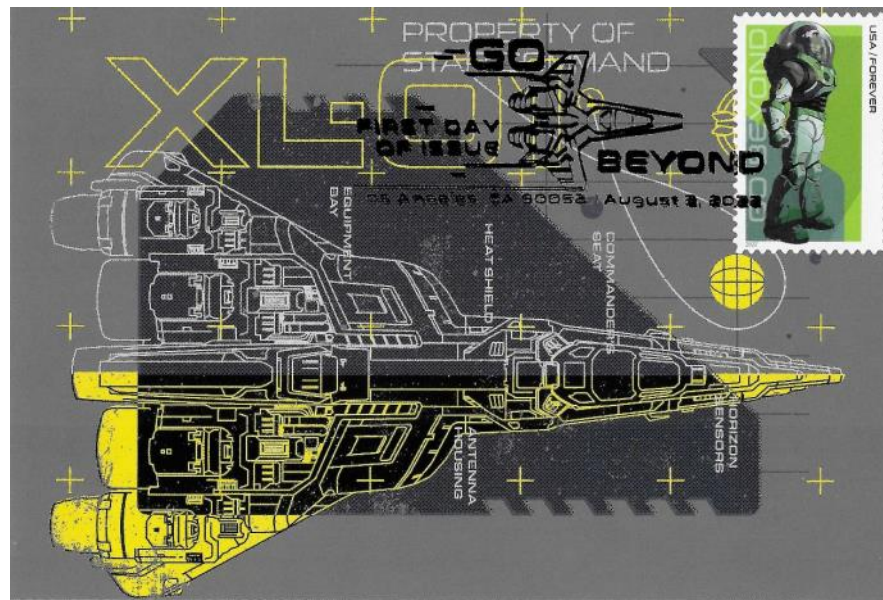


Fig. 6  
**Stamp:** Buzz Lightyear, Scott #5710  
**Postcard:** Buzz Lightyear, published by Small Planet Co.  
**Postmark:** pictorial FDOI, Los Angeles, CA 8/3/2022

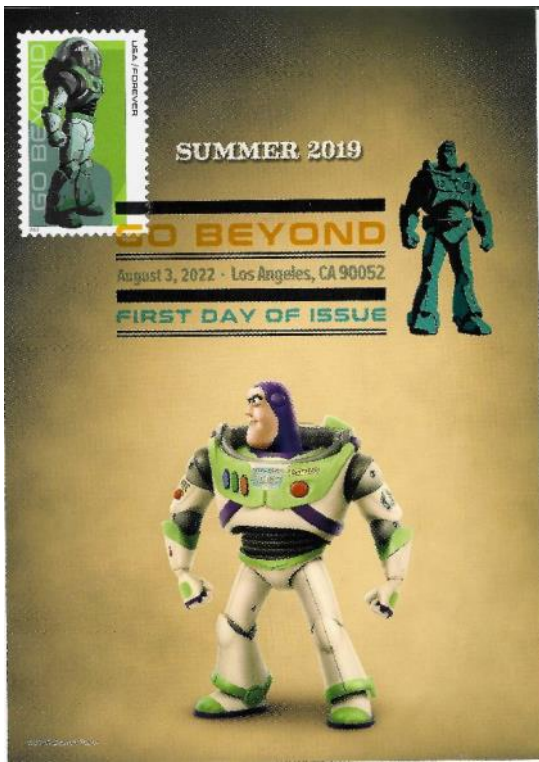


Fig. 7

**Stamp:** Buzz Lightyear, Scott #5710

**Postcard:** Buzz Lightyear, published by Disney Japan

**Postmark:** Digital color FDOI, Los Angeles, CA 8/3/2022

Dear Terry,

Fig. 1.-3 by Disney Pixar, DCP; these are joint work of James Tang and myself.

Fig. 4. again by Disney Pixar, but with B&W Pictorial; note the background of the postcard has a similar picture as the cancel.

Fig. 5. Not a FIP compliant one but I like as the picture of the card is the same as the B&W pictorial cancel; again a card by Disney Pixar.

Fig. 6. From the art of Toy Story: 100 collectible Postcards by Chronicle Books 2009, thus this card is indeed not concordant as the Light Year movie characters.

Fig. 7. Disney Japan 2019, again as 6 but this structure of the stamp, postmark and the main picture of the card looks nice.

Ying

Ying,

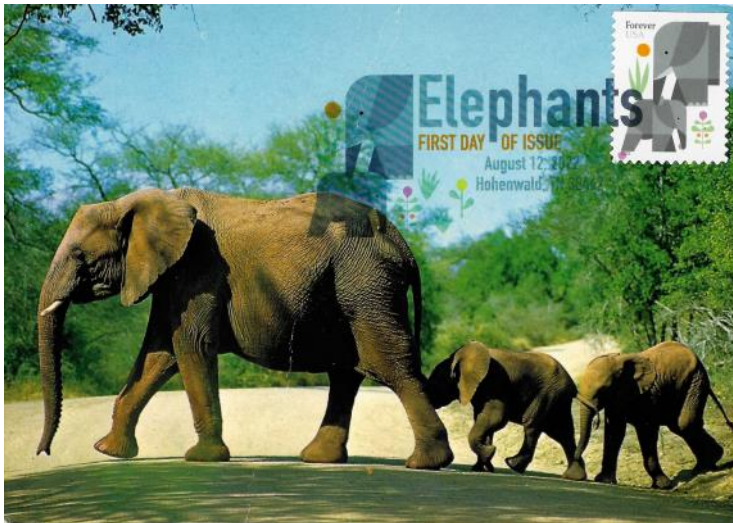
Very nice cards! Although not FIP compliant, card number 5 is indeed interesting. In my humble opinion, cards number #6 and #7 are concordant. The FIP guidelines state that there must be visual concordance. In my view, there is definitely visual concordance as Buzz Lightyear is the subject of the stamp and postcard. The postcard used in card #6 is a Disney artist's preliminary work (story sketch) for the movie. Card #7 depicts Buzz as a toy action figure. Both cards depict Buzz! It is true that these two cards may not receive as many points in an exhibit as the postcards that depict scenes from the movie, but I believe them to be FIP compliant maximum cards.

In general, I tend to be not as stringent on the FIP's "guidelines" as some maximaphilists. This may be due to my personality (still a little rebellious?). Also, I believe that strict adherence to FIP guidelines inhibits the growth of our hobby. Potential maximaphilists may be intimidated by strict rules. And after all, the FIP "guidelines" are only "guidelines" for exhibited maximum cards, not the official definition of a maximum card. I believe that if there is visual concordance (even if limited) between the stamp and postcard and there is place concordance, it is a maximum card to me.

I believe, cards #6 and #7 are compliant maximum cards, Cards #1-4 are better (more maximum) maximum cards, while card # 5 is a very collectable souvenir card.

I would like to thank Ying for sharing his cards with us and I encourage others to share their cards with our group. Send a scan of your realizations with info regarding the publisher and they just might get published!

## More 2022 Realizations by Ying Huang



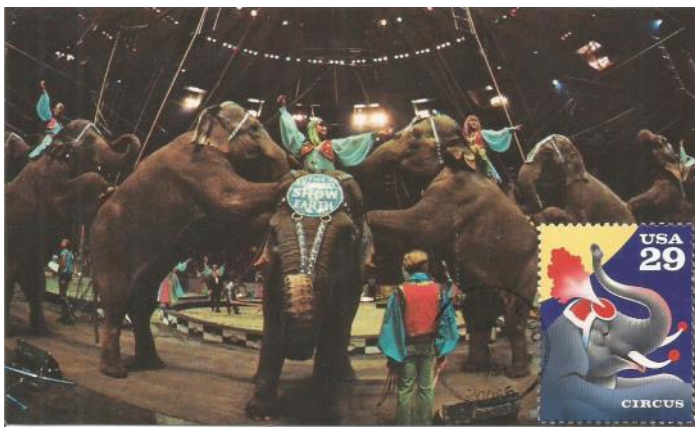
**Stamp:** Elephants, Scott #5714

**Postcard:** African Elephants from South Africa, published by Art Publishers Ltd.

**Postmark:** digital color FDOI, Hohenwald, TN 8/12/2022

## Correction

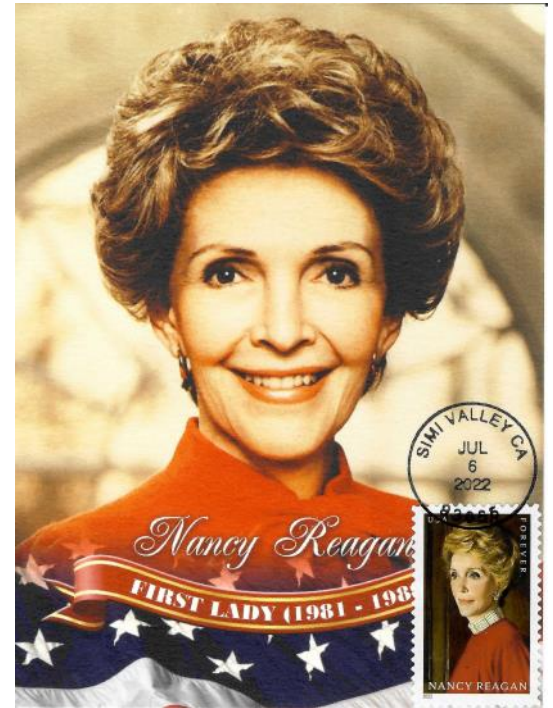
In the Elephant article in our last journal, it was reported that the US Postal Service had issued five elephant stamps. Fifteen minutes after sending out the journal to the world, I discovered that there is a sixth stamp that has been issued by the USPS. It is an elephant stamp that was part of the 1993 Circus commemorative issue.



**Stamp:** Circus Elephant, Scott #2753

**Postcard:** "Elephantastic Excitement" published by Ringling Brothers and Barnum & Bailey Circus"

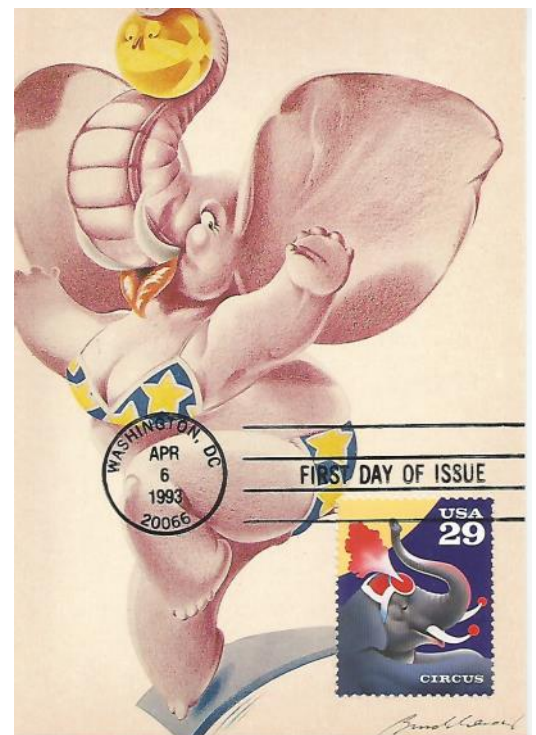
**Postmark:** FDOI, Washington, DC 4/6/1993



**Stamp:** Nancy Reagan, Scott #5702

**Postcard:** Nancy Reagan, published by HTM, images from Zazzle

**Postmark:** circle-date FDOI, Simi Valley, CA 7/6/2022



**Stamp:** Circus Elephant, Scott #2753

**Postcard:** "Elephant Rose", published by Editions F. Nugeron

**Postmark:** FDOI, Washington, DC 4/6/1993

# MEMBERSHIP APPLICATION

## For The

### MAXIMUM CARD STUDY UNIT of AMERICA

Founded in 1978, the Maximum Card Study Unit (MACSU) is an independent non-profit organization dedicated to the creation, collection, exchange, enjoyment, display, and study of Maximum Cards, by spreading the knowledge of Maximaphily among its members.

Membership includes a subscription to Maximaphily USA, a quarterly journal featuring news of the maximum card world and articles by members and experts in the field.

Articles featuring topical collecting typically are richly illustrated with maximum cards and share the author's insightful knowledge of the subject and his own personal and helpful experience.

The pages providing information regarding activities of individual members allows members to place free advertising for trading, buying, selling and exchanging information. Here the opportunity to make contacts with members in other countries is provided.

There are articles evaluating maximum cards according to accepted standards, pointing out good qualities and making suggestions for improvement.

Mail bid auctions are held on occasion, featuring inexpensive cards donated by members.

Every issue provides a page or two of illustrations of the most recent maximum card creations by our members. Every member gets a chance to show his cards and write an article about them.

.....

#### MACSU Membership Application

Name: \_\_\_\_\_

Address: \_\_\_\_\_

City, State, ZIP: \_\_\_\_\_ Country: \_\_\_\_\_

Email Address: \_\_\_\_\_

Collecting Interests (Topics, countries, etc.) \_\_\_\_\_

(Indicate if you want your name and interests listed in an upcoming issue: YES:  NO )

Club membership is only \$12 per year and includes a quarterly journal emailed to you. You can pay your dues via PayPal. Send your PayPal payment to **MAXICARDS@gmail.com**

Amanda Dempsey, Treasurer  
Forest Park, IL