

1.4 Bird Migration and its types - contd.

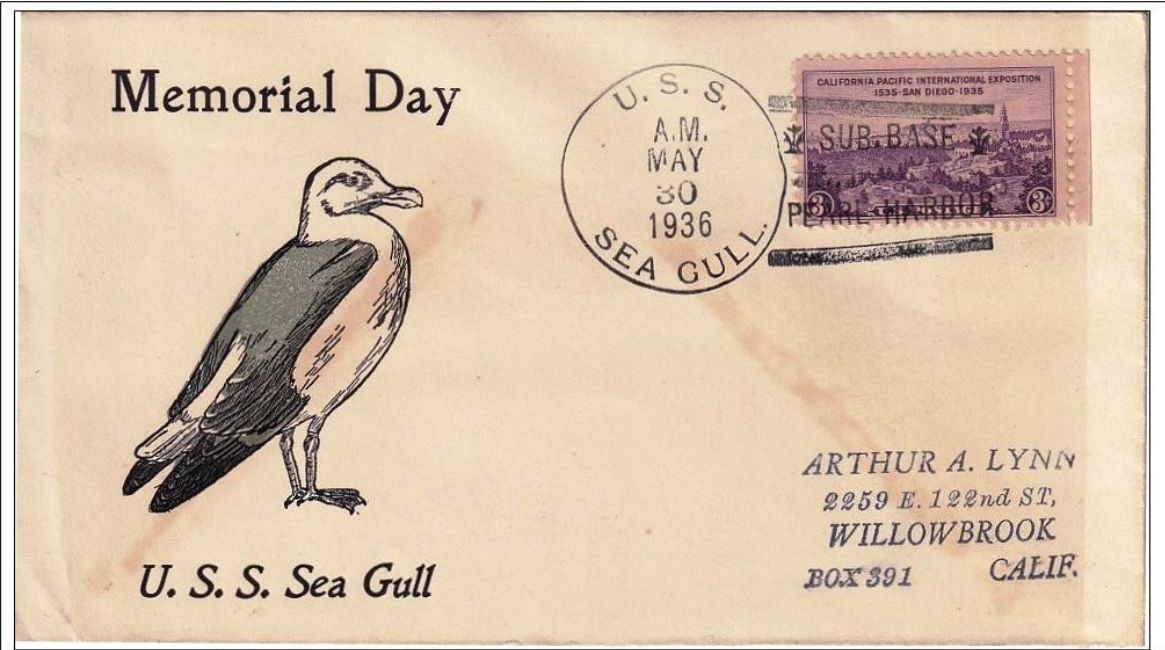
Longitudinal Migration

The longitudinal migration occurs when the birds migrate from east to west and vice-versa. Most of the population of Slender billed Gulls is somewhat migratory, wintering further south to north Africa and India, and a few birds have wandered to western Europe.

Seabirds are among the world's greatest migrants.

Sea Gulls breed around the Arctic circle (near the top of the world) and migrate to the oceans around Antarctic Circle (at the bottom of the world) This is amazing 25,000km round trip, and means they get to see more daylight than any other creature

→ 1961. Mauritania Slender billed Gull, a definitive, issued in a 3v Set. 1962, a EUROPA ovpt was also issued.



← 1936. WW I, A 3c Tied to cover hand painted, AND posted at US Ship codenamed USS SEA GULL from US submarine base at Pearl Harbor to California



→ 1961 Mauritania Sunken Proof of the 1898 3d Hula bird with inscription, Surface Paper,

'IMPRIMERIE DES TIMBRES-POSTE' at left and Autographed by the engraver

"C. DURRENS" at bottom right in black pencil