

1.4 Bird Migration and its types - contd.

Loop Migration

Birds that follow an annual circle are loop migrants. This migration includes two distinctly different routes to and from breeding grounds, often taking advantage of varied resources at different times of the year. This is common amongst hummingbirds for example. Loop migration is also common with many seabirds and shorebirds as they use seasonal variations in wind patterns to aid their flight.

1987. USA. Kodak color control patches. →
 Photo negative plate, CAPEX 87, used for printing 50v sheet
 Hummingbird is also included as part of this set.



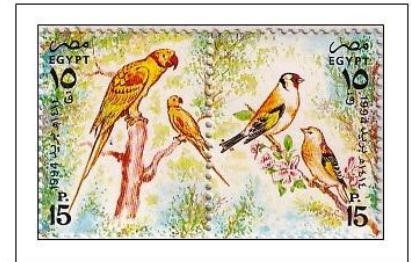
“Partial Migration”

Within a species not all populations may be migratory; this is known as "partial migration". The migrating birds bypass the latitudes where other populations may be sedentary, where suitable wintering habitats may already be occupied.



MONACO (1962) European goldfinches*. Die proof in black signed by the artist LAMBERT and the engraver BETEMPS. Protection of useful birds.

European Goldfinches are partial migrants. They are summer visitors. After breeding, males and females split up and defend their territories. Females tend to wander away their summer territory and some from S. England may travel to France for the winter.



Composite progressive color trial Imperf corner block.