

1.4 Bird Migration and its types - contd.

Moult Migration contd..

Moult is a **process of shedding and regrowing feathers**. Adult birds shed their worn out feathers from the year's breeding season and growing new, strong, warm feathers to see them through the winter. Birds need to molt each year to get rid of old or damaged feathers.

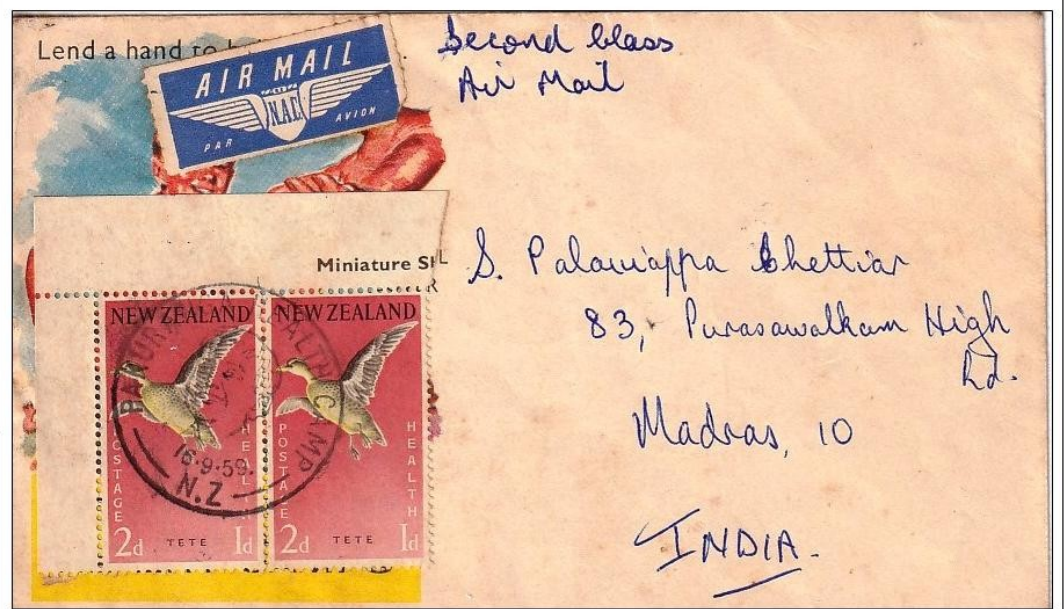


1983. Nittenau, Germany, Meter Frama, 80pf



1994. Canada Goose, at natural heritage pond of **mirande**
Gutter pair (Strip) ↑

1959. New Zealand. **Grey Teal**
2d Pair, Health Stamps, tied to cover posted from Pakuranga Health Camp to India, by Second class Airmail.
A 3d pair Pied Sillit (*Himantopus leucocephalus*) also tied on the reverse →



2000. North Korea. **Mandarin Ducks** (*Aix galericulata*) - Imperforate Pair-Printer's proof