

4. Extreme Abilities

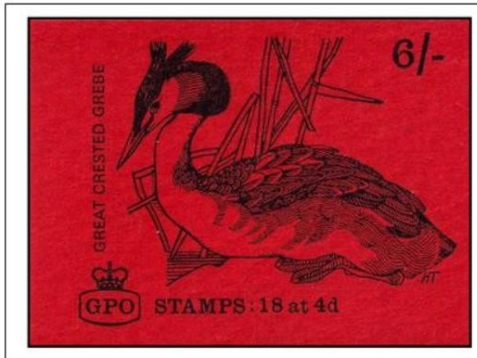
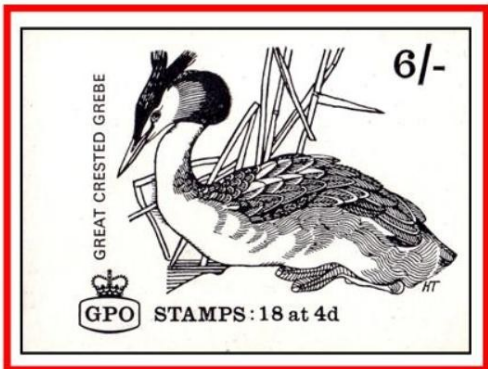
Great Crested Grebe (*Podiceps cristatus*)

Ability - Running on water as a courtship/ mating display

Two Great Crested Grebes rush in parallel across the surface of a lake in inland North America. The great crested grebe is noted for its elaborate mating display. The co-ordination of the bird's foot movements, allowing them to keep their bodies upright on the water, together with the elegant shaping of the neck and the slight arching of the wings, confers on these otherwise dumpy fish-eaters, the grace of ballet dancers.

4.13 Longest Water Dash

Geographical Distribution - Western North America



1970. Essays- Stamp Booklet Jacket with Black print - Decimal Definitive Booklets

Pictorial postmarks on Registered Covers Tied with ATMs (FRAMA)

