

4. Extreme Abilities

Superb Lyrebird (*Menuranaohollandiae*)

Ability - Mimicking all kinds of sounds

It is one of the world's largest songbirds, and is renowned for its **elaborate tail and courtship displays**, and its excellent mimicry. The species is endemic to Australia and is found in forest in the southeast of the country .

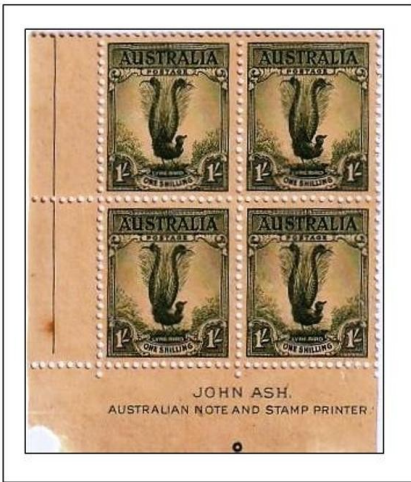
They are most notable for their **superb ability to mimic natural and artificial sounds from their environment**, and the striking beauty of the male bird's huge tail when it is fanned out in courtship display. Lyrebirds have unique plumes of neutral-colored tail feathers and are among Australia's best-known native birds.

4.14 Best Mimic

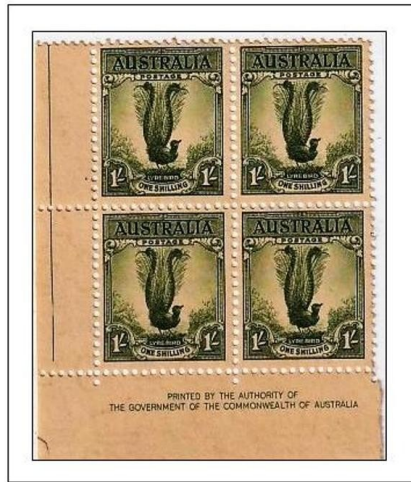
Geographical Distribution – Southeastern Australia



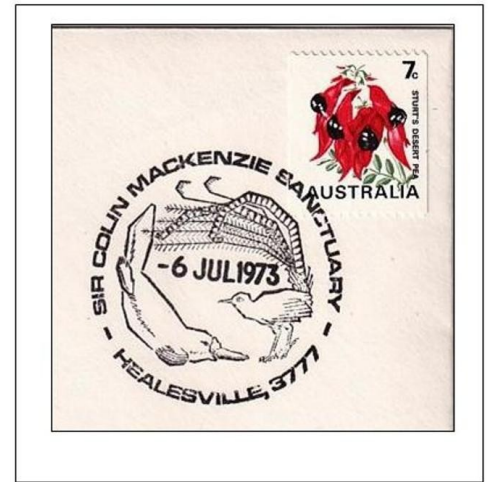
1949. Commercially used cover with a slogan, machine franked. Stamp 1942 with wrmk



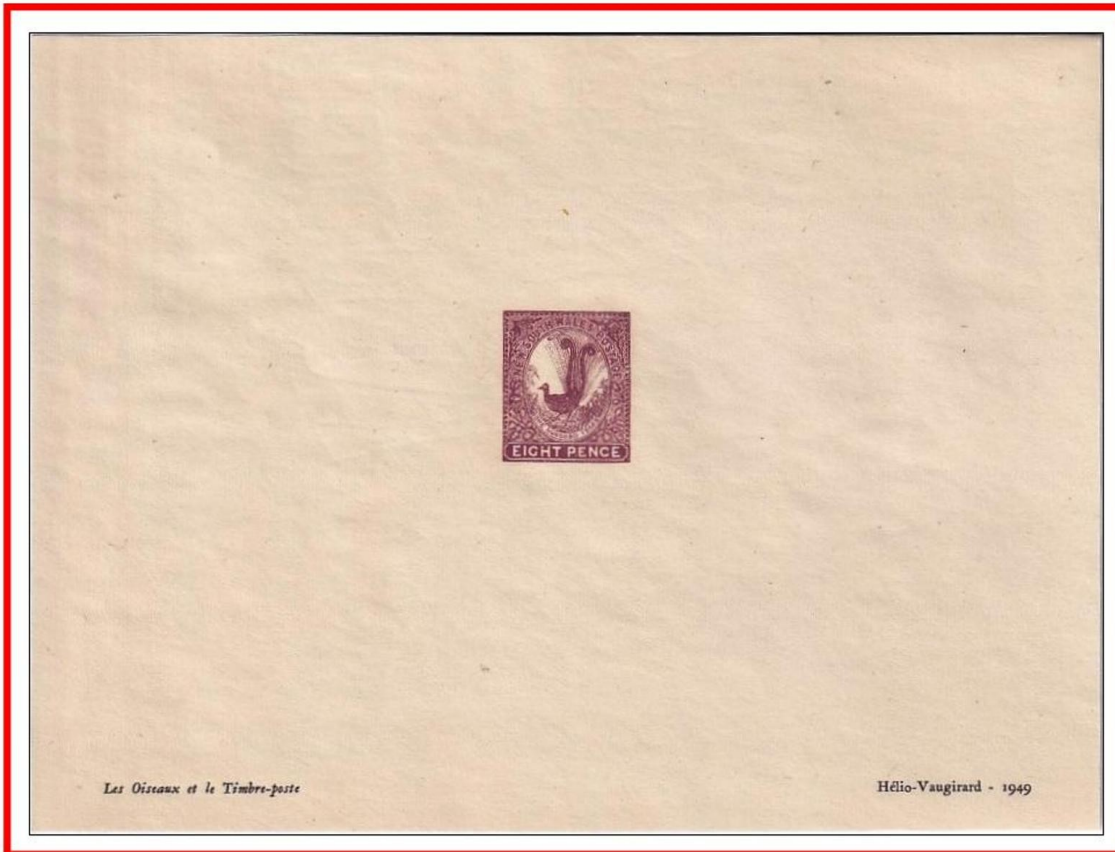
1932. Definitive. Green. Printers M/s John Ash



1932. Definitive. Yellow Green. Printers Govt. of Australia



Fancy pictorial pmk on special cover



1949 New South Wales Hélio-Vaugirard Proof of the 1888-9 8d Superb Lyrebird with inscription, 'Les Oiseaux et le Timbre-poste' at left and "Hélio-Vaugirard - 1949" at bottom right.



1932. Yellow Green



1932. Ovpt O.S. Green