

5. Extreme Behavior

Emu (*Dromaius novaehollandiae*)

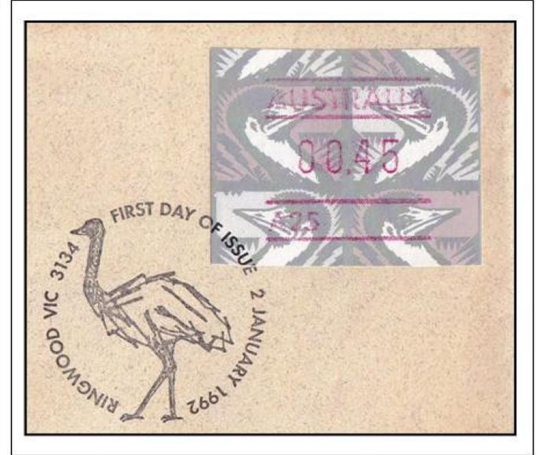
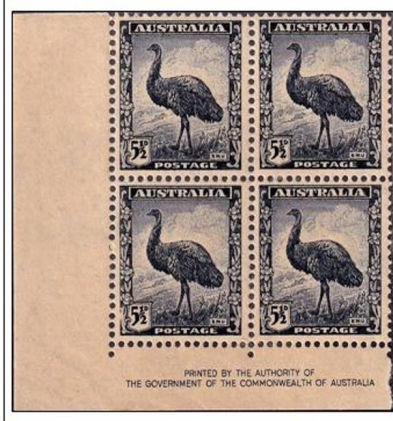
Behavior - Travelling long distances on foot

The ungainly Emu is a familiar symbol of Australia, forming one of the two supporters on the coat of arms. It is a large, flightless bird, who can run at a speed of 50km/h. Pairs form during the breeding season.

They travel almost 50km per day in search of food. The eggs are incubated and chicks are reared by male, while the female resumes her solitary nomadic life.

1942. Definitive
1943. No Wmk, Wave paper
Printed by the Authority of the Government of the Commonwealth of Australia

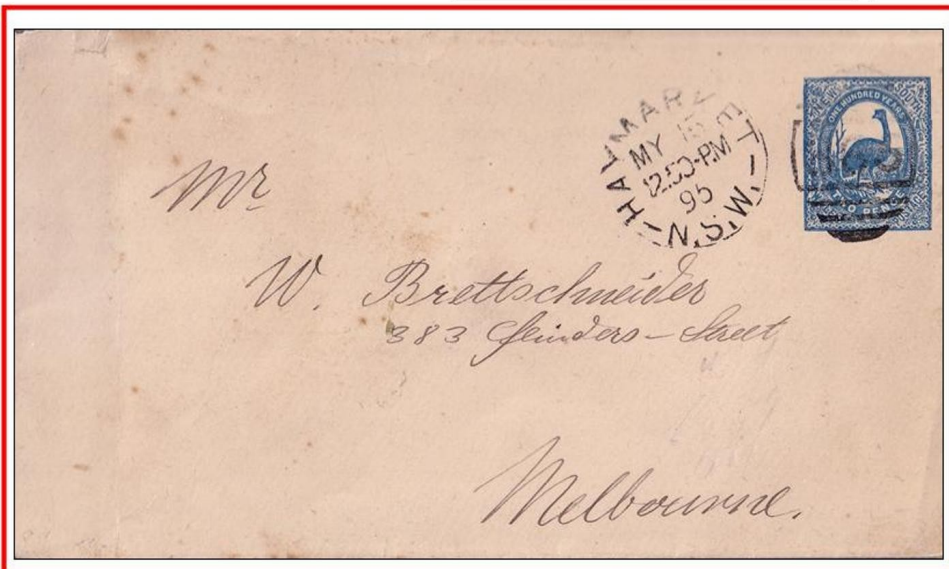
ATM (Frama) from vending machine on FDC, issued on 02.01.1992



1895. Prepaid and pre stamped Postal cover commercially used, posted to Melbourne.



First ever stamp on Bird by New South Wales Definitive Stamp Issued on 01.09.1888



Censored Cover World War II bearing Hand-stamped "1 Passed by Censor 213"

Reverse side of the cover depicting censor label and some ink markings of the sender.

