

6. Extreme Form

Toco Toucan (*Ramphastos toco*)

Geographical Distribution - S. America, tropical forests, savannas, shrubland.

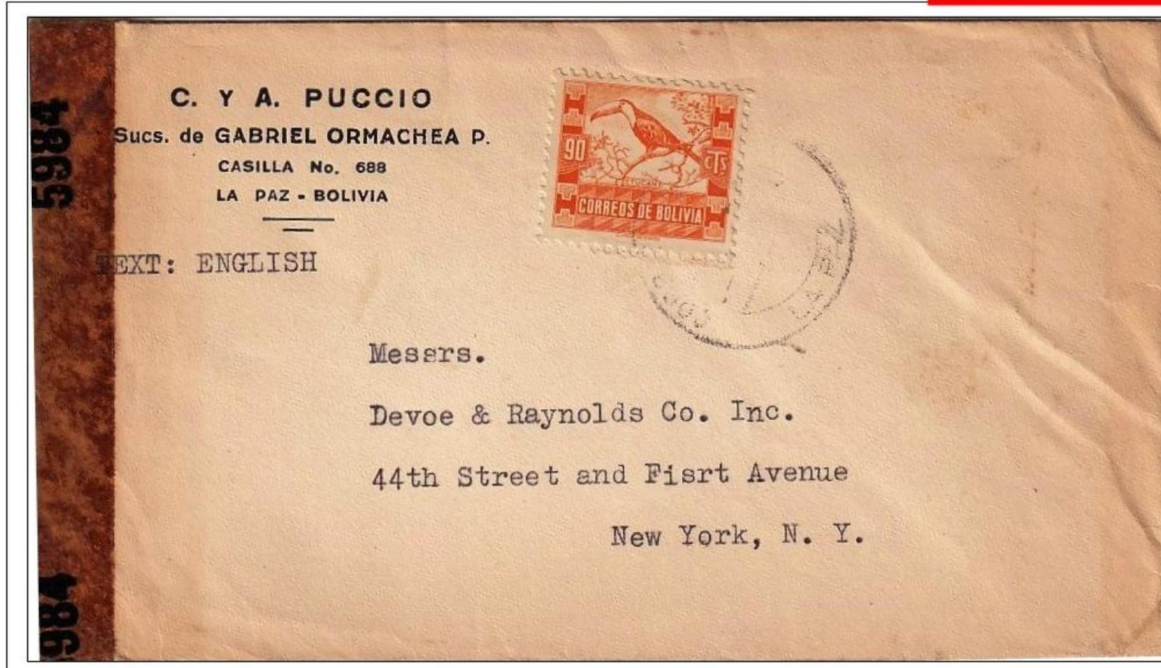
Attribute - Holds largest Beak without casque

6.14 Largest Body to Beak Ratio

EXTREME BIRDS

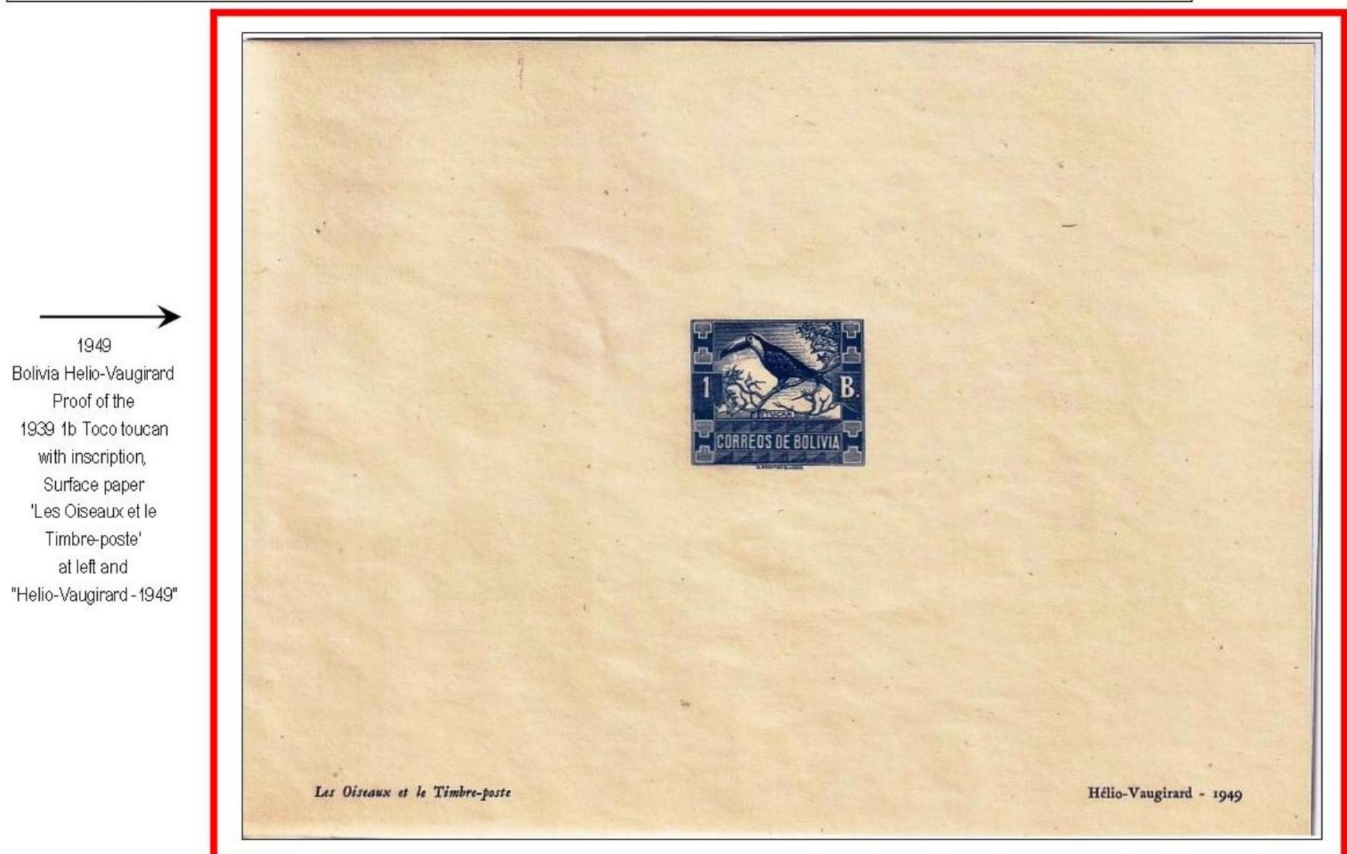
Despite its large size (a third of the length of the bird)
and considerable strength, the toucan beak
comprises only one twentieth the bird's mass.

While the large strong beak is useful in foraging,
defense and attracting mates, its low density is essential
for the toucan to retain its ability to fly.



Imperf Plate Proof
Block of 4
Carrying blue ink pen
mark of an arrow and
25 075

←
Censored Cover
WW-II
Posted from La Paz,
Bolivia to New York, tied
to 90s Definitive.
Examiner Code 5984



→
1949
Bolivia Hélio-Vaugirard
Proof of the
1939 1b Toco toucan
with inscription,
Surface paper
'Les Oiseaux et le
Timbre-poste'
at left and
"Hélio-Vaugirard - 1949"