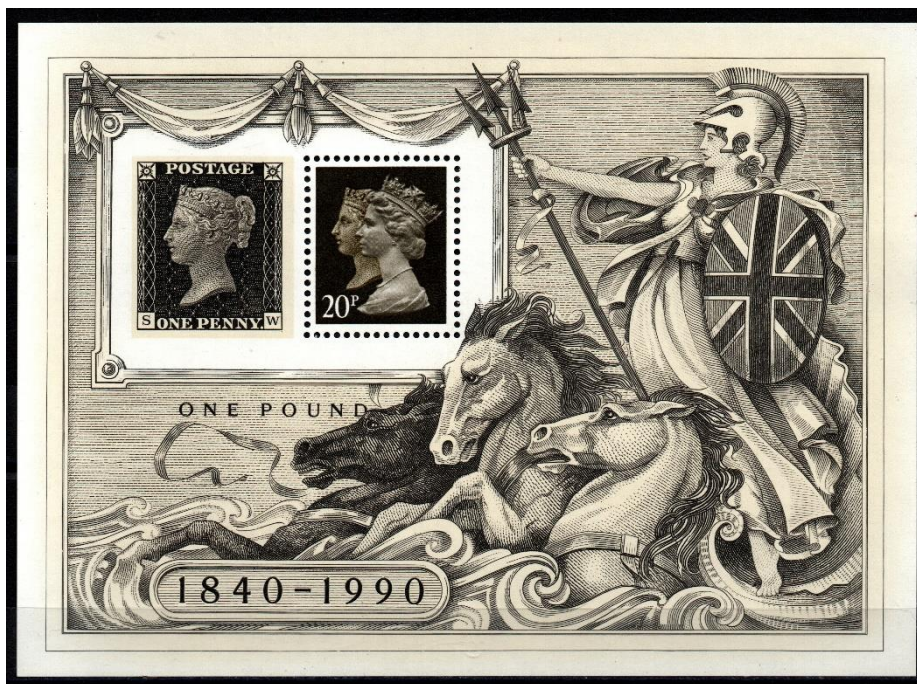


THE 150TH ANNIVERSARY OF THE PENNY BLACK MACHINS CONTINUE

3 MAY 1990

Issued by the Royal Mail on 3 May 1990. This miniature sheet was originally sold at the 'Stamp World London 90' International Stamp exhibition. Only the example of the 20p is perforated.



ELLIPTICAL PERFORATION NON VALUE INDICATOR MACHIN

6 APRIL 1993

Introduced to the Machin series in 1993. The ellipses help to deter any attempts of forgery. The elliptical holes are on both vertical sides of the stamp.

These are stamps that have no set value in an attempt to negate the need to keep issuing new stamps after each postal rate change. They are marked *1st* Orange Red, Gold and *2nd* Bright Blue for the two classes of post in the United Kingdom.



THE E – BLUE NON VALUE INDICATOR STAMP

6 APRIL 1993

The letter 'E', Deep Blue, printed photogravure by Walsall on gummed paper is a new non-denominated stamp issued to pay the letter rate to the rest of Europe.

