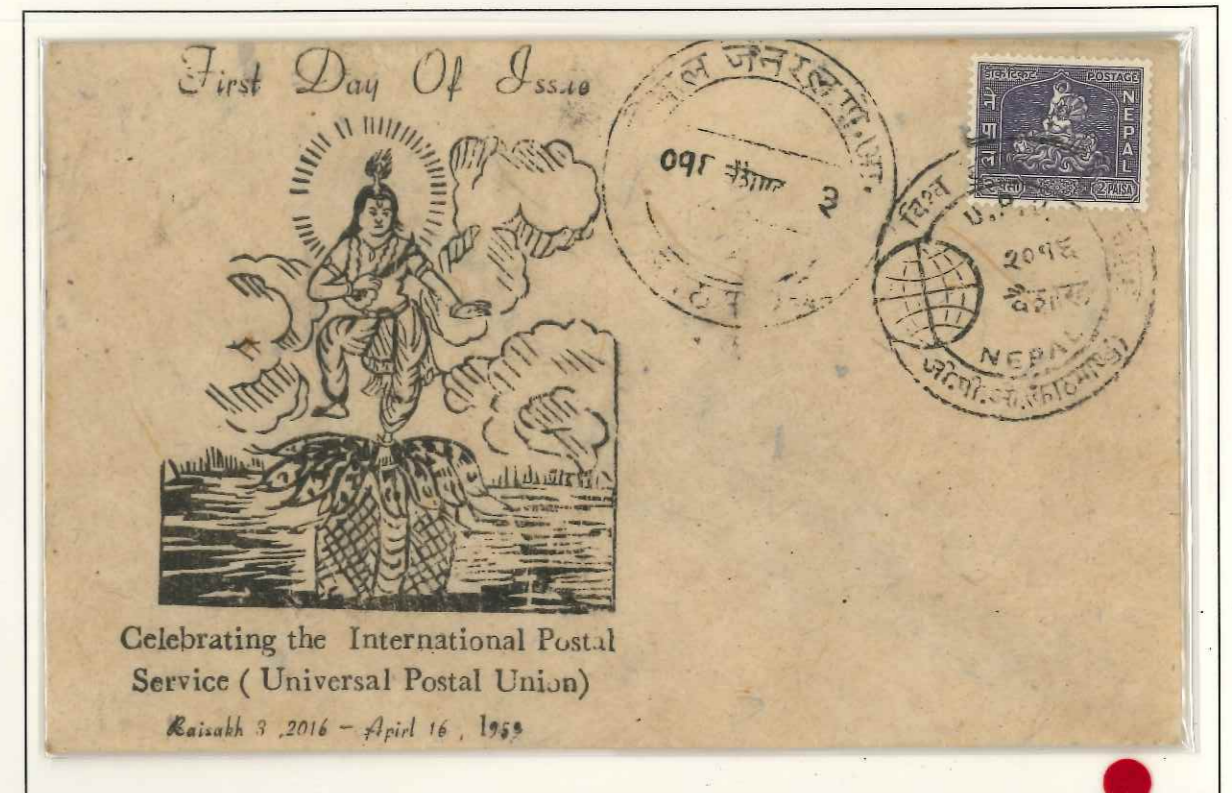


7. SACRED KUMBH MELA-A LARGEST HUMAN GATHERING

Yamuna, referred to respectfully as Yamunaji, holds a very important position in Pushti Marga, a large sect of Hinduism based on the Shuddh Advaita, in which Shri Krishna is the main deity. The river Yamuna is connected to the religious beliefs surrounding Krishna and various stories of the two are found in Hindu religious texts, especially the Puranas. One such story is *Kaliya Daman* about the subduing of Kaliya, a *Naga* (serpent) which had inhabited the river and terrorized the people of Braja.



The geographical location of Kumbh Mela spans over four locations in India and the Mela site keeps rotating between one of the pilgrimages on four sacred rivers as per astrological calculations. Each site's celebration is based on a distinct set of astrological positions of the Sun, the Moon and the Jupiter. The celebrations occur at the exact movement when these positions are fully occupied, as it is considered to be the holiest time.



Jupiter



Reverse

